

## Soccer

TJ, Decatur reach final 8

A-6

## Religion

Church mines for members

A-4

## Vocalizer

Any hum can render a song

A-3



## Index

Entertainment	A-2
Religion	A-4
Sports	A-6
Classifieds	A-8

Friday  
May 19, 1989

Excellence  
in Community  
Journalism

# Federal Way News

Vol. 37 No. 60  
Federal Way,  
Washington 98003  
50 Cents

TWIN LAKES

MARINE HILLS

REDONDO

MIDWAY

KENT WEST HILL

WOODMONT

NORTH LAKE

WEST CAMPUS



photos by Paul T. Erickson

ONE OF TWO WORKERS injured when a scaffold collapsed Wednesday at the Lakota sewage treatment plant is

removed by rescue workers. Injured were David Forler, 35, of Enumclaw, and Gerald Marvin, 35, of Puyallup.

## Three workers injured in falls at sewer plant

By KURT HERZOG

Two separate accidents in three days have resulted in injuries to three workers at the Federal Way Water and Sewer District's Lakota sewage treatment plant.

At about 9:30 a.m. Wednesday, two construction workers for Pease and Sons Construction Co., the primary contractor building the plant, were injured when the scaffolding they were on collapsed. Both workers fell about 20 feet into a concrete rectangular tank.

One, 35-year-old Gerald Marvin of Puyallup, suffered a fractured skull and was airlifted to Harborview Medical Center where he was listed in serious condition yesterday.

The other, 35-year-old David Forler of Enumclaw, suffered a broken heel and bruises and was taken to St. Francis Hospital where he was in satisfactory condition. The two workers were removing wooden forms used to shape cement when the metal scaffolding they were on collapsed, according to Fire District 39 (Federal Way) Fire Marshal Ed Courts.

Just two days earlier, 45-year-old Cindy Nubauer of

Puyallup fractured both legs when she fell about 25 feet into the same pit. The reason for the fall was not known. That accident happened about eight feet from the second accident, according to Boyd Johnson, public education officer for the fire district.

The accidents occurred in an aeration basin, a rectangular concrete structure that will be used to treat sewage.

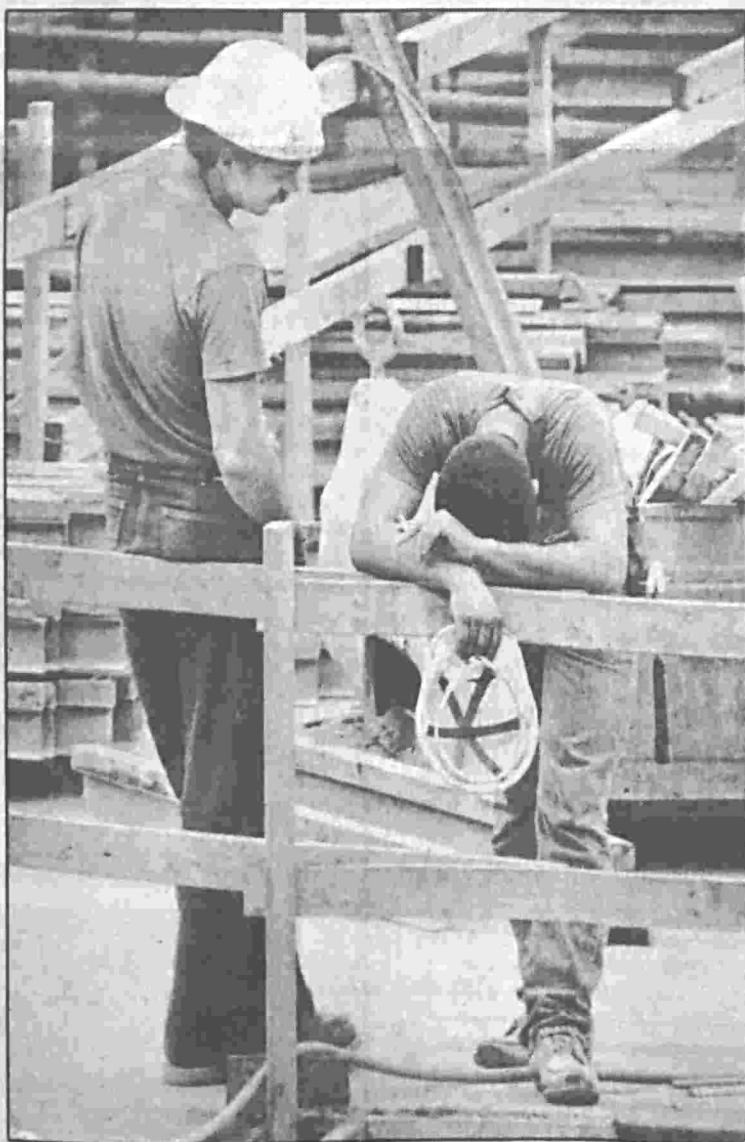
Nubauer also was airlifted to Harborview where she was in satisfactory condition.

PEASE AND Sons previously was cited by the Department of Labor and Industries for safety violations three times in the last three months, according to Barbara Dunn, a spokeswoman for the department.

On March 9, the company was cited for having unguarded scaffolding at the treatment plant site. State regulations require all scaffolding above a height of 10 feet to have guards. The company was not fined for the violation. The citation was issued when inspectors discovered it during a routine investigation.

On April 25, Pease and Sons was cited for not providing fall

Continued on A-5



CONSTRUCTION WORKER Jim Sullens (right) is consoling by co-worker Tom Ryan after Sullens witnessed an accident Wednesday that injured two workers at the Lakota sewage treatment plant. Two days earlier another employee had been injured in a separate accident.

## The final 14 Absentees may still affect some races

By KURT HERZOG

Three second-place races in the Federal Way City Council primary election still are not quite decided as King County elections officials wait to count about 2,000 absentee ballots.

Absentee ballots are scheduled to be counted about 10 a.m. today. Those races in which second-place finishers could conceivably be knocked off include: Bill Short in Position 1, who received 1,262 votes, by Ethan "Rick" Allen, who received 1,164 votes; Georgene "Jo" Asbury in Position 3, who received 528 votes, by Dave Froyalde, with 395 votes; John Ridley in Position 6, with 986 votes, by Richard Feutz, with 823 votes.

Tuesday's election winnowed the field of candidates from 37 to 14. The top two vote-getters in each of the seven council positions will face off for the Sept. 19 final election.

Voter turnout in the primary election was lower than county elections officials expected. The total turnout was about 18 percent with 100 precincts reporting. Officials had anticipated about a 25 percent turnout.

That's down considerably from the March 14 incorporation election in which 60 percent of Federal Way's 26,509 voters participated. However, that election was conducted by mail-in ballot which county officials always anticipate will be higher.

THE LOW turnout didn't seem to bother the successful council candidates who gathered at an election party Tuesday evening at the Federal Way Executive.

Mary Gates, the clear leader in Position 1, said she was obviously pleased to win and also

## Top two — so far

POSITION 1	Mary Gates	versus	Bill Short
POSITION 2	Joel Marks	versus	Mark Freitas
POSITION 3	Debbie Ertel	versus	Jo Asbury
POSITION 4	Jim Webster	versus	Elaine Cook
POSITION 5	Jim Handmacher	versus	Bob Wood
POSITION 6	Bob Stead	versus	John Ridley
POSITION 7	Lynn Templeton	versus	Phil Watkins

Based on 100 percent precinct returns, excluding absentee ballots.

was pleased with the quality not only of the other winners, but of the people she met while campaigning.

"I met so many talented people when ringing doorbells,"

Continued on A-11

## New home found for local museum

By MELODIE STEIGER

Photos, newspaper clippings and artifacts from Federal Way's past will be on display again next week as the Historical Society of Federal Way reopens its museum at a new site.

Shirley Charnell, society president, says added space and more donations will be used at the museum's new temporary site after a three-month stay at SeaTac Mall.

The museum will reopen May 25 at the Federal Way Shopping Center at South 312th Street and Pacific Highway South. The museum will move into a shop that most recently housed Bob's TV and Appliance, 31503 Pacific Highway S.

The appliance shop's old spot was donated to the historical society by the Federal Way Shopping Center until a paying tenant is found.

Bob's TV and Appliance has moved to the back of the Federal Way Shopping Center, near Payless.

ADDED TO the museum's collection since the move are a chandelier from the shopping center's old skating rink, which originally hung in the old Olympic Hotel of Seattle, and hand-carved wooden panels that had been displayed in the original shopping center's Old World Square.

The society now has more

Continued on A-11

## Regency Woods takes shape

By ANN SEIDNER HARTMAN

Developers of Regency Woods are in very early stages of site preparation, but residents of Federal Way and nearby Milton have been getting prepared for the huge development for some time.

When Milton heard about the 226-acre commercial and residential development going in right up against the city's northern border, the administration requested a traffic light be installed at Milton Road South and Kit Corner Road, slightly north of the development. The light is needed to mesh Milton's northbound traffic with new traffic from Enchanted Village and Regency Woods, said Gayla Gjertsen, city clerk.

The traffic light was installed about three months ago, ready

## Federal Way and Milton wait for growing new development

for the expected increase.

When Albertson's grocery store decided to build a new store in Milton on Meridian Avenue, across the street from the Surprise Lake Safeway store, Albertson's representatives told Gjertsen their decision was based on anticipated development in Edgewood and at Regency Woods, she said.

Milton is making ready, bracing itself for the expected onslaught of more people, more cars, more business.

This development scenario is not an uncommon one in the growing town-turned-city of

Milton, or in Federal Way, where many residents are resigned to the big trucks and piles of dirt that signal a new development.

But Regency Woods, located on a huge tract near Enchanted Village in southeast Federal Way, is fairly large, as developments go. An average subdivision usually runs only about 40 acres, said Irv Berteig, acting manager of King County Building and Land Development (BALD).

AND REGENCY Woods will include a 9-acre commercial development to serve its own 492

apartments and 436 single-family homes. This set-up, similar to the Twin Lakes development that also includes commercial and residential buildings, actually will help keep traffic problems to a minimum, said Winston Bontrager, president of Venture Partners.

Venture Partners will develop the commercial section of Regency Woods, set in a triangle at the northern-most tip of the development. The rest of Regency Woods forms an imperfect rectangle roughly flanked by Kit Corner Road on the north and east sides, by the border of Milton on the south and by Milton Road South on the west.

The entire development was,

Continued on A-11

**DEDICATED TO EXCELLENCE IN EDUCATION SINCE 1951**

**• PRE-SCHOOL • KINDERGARTEN**  
**• 1-6 GRADES • FRENCH**  
**• COMPUTERS • SUMMER SCHOOL**  
**• DAY CARE AVAILABLE**  
**• MONTESSORI TEACHER TRAINING**



**ENROLLING NOW**

**SPRING VALLEY SCHOOL**

**36605 Pacific Hwy. So. 927-2557**

# Entertainment

## A peek at the weekend

**TONIGHT:** The Kent Arts Commission will sponsor an evening of dancing to rhythm and blues to the sound of **The Lloyd Jones Struggle** tonight at 8. During his 20 years in the music business, Jones has shared the stage with notables such as Bonnie Raitt, Taj Mahal and Charlie Musselwhite. He will perform tonight with his band, **The Struggle**, in the Kent Activity Center at 600 E. Smith St. Tickets are \$8 for adults and \$6 for students and seniors and will be available at the door. Call 859-3991 for more information.

### SATURDAY:

Musical compositions by Copland, Liszt and Dvorak will highlight the closing season concert of the **The Tacoma Youth Symphony** at 7:30 p.m. in the Auburn Performing Arts Center. The concert will be free and will feature the talents of many young musicians, including some from Federal Way. Violinist Callista Koh, concertmaster for the orchestra, will perform Mozart's "Turkish Symphony." The center is located at 700 E. Main St. in Auburn. Call 931-4827 for more information.

**SUNDAY:** A spaghetti feed will complement the Federal Way Community Band's quarterly concert at 7 p.m. in St. Theresa's Catholic Church. Included in the evening's music will be works the local band played at the Abbotsford International Festival in Canada, at which it won first place. The church is located at 393 S.W. 331st St. Call 838-5924 for more information. Also Sunday, the annual Federal Way Sports Collectors Show will be from 9 a.m. to 4 p.m. at the Best Western Executive in Federal Way. Collectors will display, sell, buy and trade sports memorabilia. Tickets are \$2 for adults and \$1 for children 13 and younger. Call 839-8000 for more information.



Callista Koh

## At the Movies

### "BEACHES"

Bette Midler shines in this touching story about two girls from vastly different backgrounds who become life-long pen pals and friends. Barbara Hershey's performance can't be faulted, either, and Lainie Kazan steals every scene she's in as Midler's mother. Playing at Gateway Center.

### "DANGEROUS LIAISONS"

Sexual and emotional games are the subjects of "Dangerous Liaisons." John Malkovich and Glenn Close play 18th Century French aristocrats who are associates and self-proclaimed masters of betrayal and sexual gamesmanship. The games they play are humorous, but eventually lead to a tragic ending. The dialogue is shockingly enjoyable and much of the movie is decadent fun. Nonetheless, the movie preaches a timeless message: human emotions are not to be trifled with so callously. Rated R. "Dangerous Liaisons" is playing at Gateway Center.

### "PET SEMATARY"

A Stephen King vehicle that's more chilly than chilling, due to an overly streamlined script and a succession of false alarms, "Pet Sematary" has a few scary moments, but not nearly as many as it promises. A young family moves to Maine and discovers the unique properties of an Indian burial ground. Fred Gwynne has a supporting role. Rated R for violence and some bloody effects. "Pet Sematary" is playing at SeaTac South and Lewis and Clark cinemas.

### "RAIN MAN"

"Rain Man" is a classic contrast between character playing and character

stereotyping. Tom Cruise plays his usual slick self, this time a high-strung Los Angeles businessman. Dustin Hoffman is his autistic math genius brother. Hoffman's performance, as usual, is impeccable. The two brothers meet, essentially for the first time, when their father dies and leaves his fortune to the autistic's institution. Cruise's character kidnaps him as leverage and as a way out of his latest business failure. The two set out on a cross-country road trip in dad's classic convertible — it's a rocky road into the sunset. Hoffman fans will love "Rain Man," which is rated R and is playing at SeaTac North.

### "TWINS"

"Twins" is as funny as it's cracked up to be. Danny DeVito and Arnold Schwarzenegger star as twin brothers who are the result of a laboratory experiment to develop the perfect human being. Schwarzenegger comes out the way scientists had hoped, but DeVito's a mutant who wasn't supposed to be born. Schwarzenegger, making his comical debut, discovers that he has a brother, after being raised on a tropical island. He sets out to find him and his family roots. The two meet up in sunny California, where DeVito lives a slimy life stealing cars to pay off his debts. He bites off more than he can chew, though, and needs the assistance of his big brother, who naively comes to the rescue. If you're looking for a laugh, go see "Twins." It is rated PG and is playing at Gateway Center.

Downside," through May 28 in Seattle. Call 285-5110 for more information.

### BATHHOUSE

The Bathhouse Theatre Company has opened the first of its three-play series of landmark American dramas with Royall Tyler's "The Contrast." The play will run through May 28. Call 524-9108 for more information.

### BLT

The Burien Little Theatre continues performances of "And A Nightingale Sang" through May 27. Complimentary pastries and flowers will be part of a festive Mother's Day matinee performance Sunday. Call 242-5180 for more information.

### EMPTY SPACE

The Empty Space Theatre has extended performances of Joe Orton's wild farce "Loot" through June 11. Call the box office at 467-6000.

### EVERGREEN

The Evergreen Theatre Conservatory presents Scott Warrender's zany musical review, "The Texas Chainsaw Manicurist" through Sunday. Call the box office at 443-1490 for more information.

### LAKEWOOD PLAYERS

The Lakewood Players presents John Steinbeck's classic "Of Mice and Men" at the Lakewood Mall through tomorrow. Call 588-0042 for tickets and more information.

### MOORE THEATRE

Two actors play 20 in the comedy "Greater Tuna," playing at the Moore Theatre through May 28. Call Ticket-

master at 628-0888 for more information.

### PIONEER SQUARE THEATER

Pioneer Square Theater will stage "Angry Housewives" at the theater's Mainstage through May 28. Call 622-2016 for more information.

### SEATTLE CHILDREN'S THEATRE

The Seattle Children's Theatre will continue performances of Moliere's comedy classic, "The Would-Be Gentleman" through June 11 at the PONCHO Theatre. Call 633-4567 for more information.

### WORLD MOTHER GOOSE

World Mother Goose, theater for the very young, will present "Alice in Looking Land" through Sunday in the Seafair Center House Theatre. Call 441-SHOW for more information.

## Lounges

### BLOCKHOUSE

The lounge features live music every night except Monday, starting at 9 p.m. Mark McGlenn is now playing. Entertainment begins at 8:30 p.m. Sundays. There is a dance floor and no cover charge.

### CHANDELLE'S

The restaurant's lounge features live entertainment seven nights a week. Sundays and Mondays, entertainment starts at 8. Tuesdays through Saturdays it starts at 9. City Zoo is now playing. There is a dance floor and no cover charge.

## On Stage

### ACT

A Contemporary Theatre presents Richard Dresser's comic satire, "The

## Regional chorale to sing in June

The Rainier Chorale will present a "Songfeast" dinner concert June 4, and early reservations are recommended.

While dinner is served at 4:30 p.m. at the SeaTac Red Lion Inn, the Rainier Chorale will provide continuous entertainment with showtunes from Broadway.

Directed by Patricia Butler of Burien, ensembles and soloists from the local chorale will perform tunes from "South Pacific," "Music Man," "Paint Your Wagon" and "Big River."

The Rainier Chorale draws its members and audiences from Federal Way, West Seattle, Seattle, White Center, Burien, Des Moines, Renton, Kent, Auburn, Puyallup and Bellevue.

Tickets for "Songfeast" are \$20 general admission and \$16 for seniors. The cost includes dinner, tax, a gratuity and an evening of entertainment.

Call Yvonne White at 226-5989 for reservations and more information.

AMC SEATAC 12		TODAY'S TIMES	
<b>NORTH</b> (CENTER PLAZA) <i>(SPECIAL ENGAGEMENT)</i> <b>FIELD OF DREAMS</b> 1:40, 4:45, 7:30, 10:10 PG	<b>ACROSS 320TH FROM SEATAC MALL</b> 839-6984 <b>CRIMINAL LAW</b> 2:00, 5:00, 7:55, 10:30 R	<b>SOUTH</b> (SEATAC MALL) <b>THE DREAM TEAM</b> 2:00, 5:05, 7:55, 10:30 PG-13	<b>SOUTH 320TH AT HIGHWAY 99</b> 839-3050 <b>SHE'S OUT OF CONTROL</b> 2:30, 5:25, 8:00, 10:25 PG
<b>LISTEN TO ME</b> 1:50, 4:55, 7:40, 10:20 PG-13	<b>RAINMAN</b> 1:30, 4:30, 7:25, 10:25 R	<i>(SPECIAL ENGAGEMENT)</i> <b>SEE NO EVIL, HEAR NO EVIL</b> 1:40, 4:45, 7:15, 9:55, 12:00 R	<i>(SPECIAL ENGAGEMENT)</i> <b>HOW I GOT INTO COLLEGE</b> 1:50, 4:35, 7:25, 10:15, 12:10 PG-13
<b>SCANDAL</b> 2:10, 5:10, 8:00, 10:35 R	<b>NIGHT OF THE DEMONS</b> 1:55, 10:15 R	<i>(SPECIAL ENGAGEMENT)</i> <b>PET SEMATARY</b> 2:10, 4:55, 7:35, 10:05, 12:05 R	<i>(SPECIAL ENGAGEMENT)</i> <b>MAJOR LEAGUE</b> 2:20, 5:15, 7:45, 10:20 R

## Theater sponsors children's workshop

The Puget Sound Musical Theatre and the Federal Way School District will sponsor a summer musical theater workshop for kids this year.

Beginning June 26 and ending July 29, the program will give children ages 8 to 13 confidence in their abilities to participate in the performing arts. They will be taught performance skills such as dance, music and drama from local professionals and will perform a children's musical at the conclusion of the program.

The workshops will be Mondays through Thursdays from 8 a.m. to noon at Totem Junior High School. The cost is \$125 per child, plus expenses for costumes.

The program will be limited to the first 50 enrollees, so pre-registration is recommended. Call Mary Jean McDonald, artistic director of Puget Sound Musical Theatre, at 246-9180 for more information.

Other community members who will be involved this summer will be Lanie McMullin as director of the production, Mayme Paul Thompson as choreographer, Pam Smiley as music director and Dick Dilley in charge of sets and lights.

**Northwest Church**

**MINISTRY WEEKEND**  
with  
**Cliff and Mari Hanes**  
May 19-21

Cliff and Mari Hanes serve as the Northwest District Supervisors of Foursquare Churches overseeing more than 240 churches in eight states. Having pastored two large and thriving congregations, they accepted the responsibility to pastor pastors nearly three years ago. Mari is an author, licensed social worker, and a noted conference and seminar speaker. Together, these two bring dynamic, relevant and vital ministry to those they touch. This will be a powerful weekend. We hope to see YOU here!

**Sunday 9:00 & 10:45 a.m. - Cliff Hanes Speaking\***  
\*Child care and special activities provided for children birth-6th grade.

Hosted by **Northwest Church** 34800 21st Ave. S.W.  
**First Foursquare Church of Federal Way** 952-3500 or 838-6321

**Grand Re-Opening**

**Scoreboard Pub**

**1/2 PRICE FOOD & BEVERAGES**  
All night long!

**Prizes!**  
T-Shirts, Sweatshirts, Mugs & More!

**PULL TABS & Shuffleboard**

Lunch & Afternoon Food Specials

Enjoy-Darts, Pool Tables & Video Games

**839-4791**

**Scoreboard Pub**  
1200 S. 324th Federal Way

**It's a World of Fun**

**ENCHANTED PARKS**  
Federal Way

**GRAND OPENING**  
Saturday, May 20

**DISCOUNT SEASON PASSES ON SALE NOW AT HALF PRICE... ONLY**

**\$49.95**

**FIRST TIME OFFERED ENCHANTED VILLAGE... ONLY**

**\$19.95**  
OFFER GOOD THRU JUNE 30, 1989

**EXPERIENCE IT NOW...**

**ENCHANTED PARKS**  
Wild Waves

Call for information  
Tacoma (206) 927-4113  
Seattle (206) 838-8828

**General Cinema Theatres**

**GATEWAY CENTER CINEMA 8**  
320th SOUTH at I-5 946-2292  
BARGAIN MATINEES \$3.00  
MON - FRI: ALL SHOWS BEFORE 6 PM  
SAT, SUN & HOLID: 1st MATINEE SHOW

**ROADHOUSE** DOLBY  
12:00, 2:25, 5:00, 7:20, 9:45 R

**BEACHES** 1:50, 4:25, 7:00, 9:35 PG-13

**BILL & TED'S EXCELLENT ADVENTURE**  
1:30, 5:25, 9:10 PG

**TWINS** 3:20, 7:15 PG

**DANGEROUS LIAISONS** R  
2:15, 4:45, 7:25, 9:50

**DEAD CALM LEVIATHAN** R  
2:10, 5:55, 9:40  
4:05, 7:50

**SAY ANYTHING** DOLBY PG-13  
1:25, 3:40, 5:50, 8:00, 10:10

**K-9** DOLBY PG-13  
12:10, 2:30, 4:50, 7:10, 9:30

**ROADHOUSE** TNX  
12:30, 2:55, 5:20, 7:45, 10:15



DARBY WILLIAMS (right) laughs as Tina Bernstein (middle) tries a saxophone solo on Williams' new invention, the

Vocalizer 1000. Chidike Nwabude looks on.

## Philharmonic to stage final season concert

The Federal Way Philharmonic will perform its season finale concert tomorrow at St. Theresa's Catholic Church in Federal Way.

The philharmonic's final concert for the season will feature violinist Jan Ekstedt, concertmaster, who will perform a selection from Antonio Vivaldi's "The Seasons."

In addition, soprano Rachel Coloff will vocally illustrate a history of the development of the American musical during the 1930s. Coloff is a graduate of the University of Puget Sound and performs with the Tacoma Opera and with other orchestras.

Ekstedt has been concertmaster for the Federal Way Philharmonic for four years and has performed with many symphonies throughout the Northwest.

Tickets for the performance will be \$8 general admission, \$6 for seniors and \$20 for families. Tickets will be available at the door or can be purchased at any Ticketmaster outlet and at two locations in Federal Way: Washington Mutual Savings Bank and The Place for Gifts and Things in the Quad. The church is located at 3939



### Playing Near You

S.W. 331st St. near Hoyt Road. Coming in June, the Federal Way Philharmonic will present "A Day at the Races" at the Longacres Paddock Club in Renton. Admission to the races June 11, reserved seating and a roast beef buffet will be included in the \$25 ticket price. Guide books will be distributed and a former jockey will be on hand to answer guests' questions. Tickets will be sold in advance only, and they must be purchased by May 31. Call 941-7198 for reservations and more information about the "Day at the Races" and about the season finale concert.

## Vocalizer is ultimate instrument

By SEAN ROBINSON

Imagine the ultimate musical instrument. What would it do? It would reproduce the sound of any other instrument. It would be portable and affordable. And anybody could play it, regardless of musical talent.

The Vocalizer 1000 might be that instrument. It's not perfect, and some musicians may debunk it. But it does allow anyone to make and record music of professional quality. And at \$299, it's not out of reach.

It's about the size of the Pee-Chee folder high school students carry. It duplicates the sounds of 28 instruments, and with better quality than the often cheesy keyboard/synthesizers that are flooding the market. It's voice-activated; all you do is hum into the microphone.

Best of all, it monitors pitch. This feature makes it impossible to be out of tune. The Vocalizer automatically adjusts the wayward note to whatever key the song is in.

Darby Williams, inventor of the Vocalizer, has spent five years perfecting his brainchild. He was inspired by a clarinet.

"I DIDN'T have a very good experience learning to play clarinet when I was young," said Williams. The clarinet

Inventor achieves his dream of intuitive musical expression

eventually was stolen; Williams jokingly said he didn't arrange it.

"I wanted to make music, dammit," said Williams. "I didn't want to learn a new language. I wanted to intuitively express myself."

Onlookers at a Vocalizer demonstration at the Southcenter Bon Marche took the opportunity to intuitively express themselves. Williams let every passerby take a stab at a solo. His confidence was justifiable.

"It's fun. That is neat. Boy!" said one woman after trying it. She said she had no musical experience, yet her sax solo had all the chops of Grover Washington Jr.

"This lets that entry-level person come in and get satisfaction," said Williams. "(It's) not like this mountain you have to scale, and a year later see if you're any good.

"It won't make you an instant musician," said Williams. "But the more you play it, the better you get."

ALTHOUGH the Vocalizer is an amazing invention, it has

some problems. Yes, it makes you sound like an accomplished musician, but only if you hum along with "SmartSong" cartridges that are provided with the machine (at extra cost, of course).

A "SmartSong" is basically a generic popular musical progression. There are seven per cartridge. Selections include blues, jazz and Latin progressions. When the SmartSong plays, the performer picks an instrument with the press of a button, and hums into the microphone. The Vocalizer translates the hum and regulates the pitch. The result is a professional-sounding solo — trumpet, guitar or whatever you wish.

The problem is that these progressions are the only thing you can play to. It is possible to "decompose" the SmartSong by erasing some of the backing tracks and replacing them with your own, but this doesn't apply to percussion and bass, which form the rhythmic and melodic fabric of any song. If you can't take away the drums and bass, you can't change the tune.

The reason for this limitation is the pitch meter contained in the Vocalizer. When the pre-taped cartridge is in, the pitch meter knows the key of the song, so monitoring pitch is simple; the machine adjusts the performer's hum to whatever key the SmartSong is in. But without the SmartSong, the pitch meter has no frame of reference. It must rely solely on the intonation of the performer.

The pitch meter is ultra-sensitive, far beyond the capacity of the human ear. It recognizes bends, slides and trills of notes even if you don't want it to.

Without a SmartSong cartridge, even a good, classically trained singer would have trouble with the Vocalizer's pitch adjustments. It makes such fine distinctions that one's voice sounds like a stuttering siren as the meter figures out the "right" pitch.

Williams said future models of the Vocalizer will allow for complete decomposition of the SmartSongs. Until then, his invention is more of a curiosity than anything else. Amateurs can use it, but experts will be bored. People want to be able to compose. Who wants to solo to the same seven songs over and over, besides the Beach Boys?

## Wild Wave pools are filled for opening day

Enchanted Parks in Federal Way is ready for grand opening day tomorrow — the pools are filled at Wild Waves water park and entertainment is lined up in Enchanted Village.

Enchanted Village includes a video game room, gift shops and food booths.

This year, Enchanted Parks will offer a variety of special entertainment, including the U.S. High Diving Team with its comedy diving stunts, a centennial celebration show, an exotic animal show and the Tube Dude Puppet Show. All shows will be performed three times daily. The combination Wild

Waves/Enchanted Village admission price is \$14.95, while admission to Enchanted Village only is \$8.95. Children age 2 and younger will be admitted free.

Discount tickets are available at all Safeway stores and cost \$12.95 for the combination ticket and \$6.95 for Enchanted Village admission only.

In addition, season passes are on sale for half price. A season pass to Enchanted Village and Wild Waves is \$49.50 and the season pass to Enchanted Village only is \$19.95. Passes will be on sale only at Enchanted Parks through June 30.

For more information, call 338-8676.

### OUTSTANDING FACULTY

Four Highline Community College faculty members have received recognition awards for the months of March and April. The faculty senate bases its selection on nominees' classroom and program management as well as professional endeavors.

Edward Morris, a full-time instructor in the mathematics department, and Michele Manber, a part-time psychology instructor, were the recipients for March.

Joan Fedor, a full-time English department instructor, and Anita Graham, a part-time counselor in the Women's Programs office, were the recipients for April.

### DAVID BRAGG

David Bragg, a Federal Way High School graduate, has joined the Parsons Agency as a promotions coordinator. The Kirkland firm specializes in advertising and the print media.

Bragg was previously an advertising representative for Community Directories, a directory which covers Federal Way and Burien.

### IMAGE CONSULTANT

Deborah Richelle of Federal Way has been certified as an image consultant for BeautiControl Cosmetics, Dallas.

Richelle participated in a comprehensive classroom training program and is now qualified to market BeautiControl cosmetic products.

### BAR EXAM

Three Federal Way residents have passed the Washington State Bar Examination, administered in February.

Shirley A. Flies, Wayne Delos Hagen Jr. and Kimberly Bray Harrington are all eligible to practice law in the state of Washington.

Of the 533 candidates sitting for



### Local Heroes

the exam, 57.8 percent passed.

### RADIO MONEY

Dorothy Lee of Federal Way recently won \$1,000 in a radio promotion by KOMO AM 1000. Lee was the designated caller in the contest, when her year of birth was announced — 1959.

### PLU GRADUATES

Ten Federal Way residents received their college diplomas at the May 21 ceremonies at Pacific Lutheran University. The graduates and their degrees are:

Adria Esterbrook, BAE in secondary business education, Tracy Gosselin, BBA in business administration, Jerrod Hainline, BA in communications, Cristine Hamlin, BAE in elementary social sciences, Denis Hoover, BA in social work, and Crystal Johns, BSN in nursing.

Brian Key, MBA in business administration, Kristine Milnor, BAE in physical education, Shawn Pabst, BBA in business administration and Robert Watson, BA in computer science.

### WILLIAM J. WORTLEY

Washington Natural Gas has named William J. Wortley its vice president of public affairs.

The Federal Way resident has been with Washington Natural since 1977. He was previously assistant vice president of public affairs.

### ANNIE WRIGHT SCHOLARS

Three Federal Way students were honored for their excellent academic performances at Annie Wright School in Tacoma.

Piper Keables, a freshman, earned high honors for her 4.0 grade point average during the second trimester term. She is the daughter of Mr. and Mrs. Dan Keables.

Cami Cooper, a senior, earned honors for her grade point average above 3.3. She is the daughter of Mr. and Mrs. Donald Cooper.

Marion Williamson, also a senior, earned honors as well. She is the daughter of Mr. and Mrs. Howard Williamson.

### FIRST INTERSTATE PRISM AWARDS

The managers of two Federal Way branches of First Interstate Bank were honored with PRISM Awards for success in achieving customer service and loan campaign goals.

West Campus branch manager James Layton, and Military Road branch manager Renate Myers received PRISMS from William Randall, the bank's chairman and CEO.

### GINNY ERDAHL

Ginny Erdahl has been promoted to Pacific Northwest Regional Director of the American Institute for Foreign Study. AIFS offers educational exchange programs with countries in Europe and Asia. Erdahl started with AIFS in 1978 and is a Kent resident. She has placed many students in the Federal Way School District.

### SOROPTIMIST AWARDS

The Federal Way Soroptimist Club has selected Wendy Olson and Bar-

bara Libo as the recipients of its Training Awards.

The awards are presented to women who are re-entering the job market and need further education to upgrade their status. Olson received \$1,000 and Libo received \$400.

### UW HIGH SCHOLARS

The University of Washington has released the names of students who qualified for the high scholarship list for winter quarter. To qualify, a student must earn at least a 3.5 grade point average.

Those students from Federal Way are:

Jerda Bartlemy, Joyce Brannon, Rodney Britten, Heather Brooke, Andrew Brown, Heather Brown, Jennifer Cavanaugh and Iksung Chang.

Also honored were: Melissa Costantino, Phuong-Anh Ba Dang, Edwin Daniels, Sabrina Dawson, Steve Elmer, Brad Florito, Sharon Gentry, Wendy Graves, James Iwamoto, Carleen Janson and Dehanna Jones.

Also listed were: John Jurich, Lori Karpan, Adrienne Kelley, Chul Won Kim, Yun Kyong Kim, Lisa Lawrence, Kwang Lee, David Liu, Thomas Llewellyn, Joseph Martin and Bart Milner.

Included were: Archan Naksorn, Kristen Nelson, Kim Nguyen, Lynette Peterson, Elizabeth Quain, Laura Schantz, Gregory Schwarz, Norman Seaholm, Christopher Townsend, David Vansickle and Gail Wamba.

And finally, the list included: Kimberly Weaver, Randall Weaver, Carl Weber, Patrick Weinman, Michelle Werner, Michael West, Cheryl Wheeler, Charles Yang and Kelly Zitkovich.

# THANK YOU

## BOB STEAD

Candidate for City Council Position #6



An unforgettable theatrical experience

### Come See Imago

Theatre Mask Ensemble  
Saturday, May 20, 1989 at 2:00 p.m.  
Artists-Lecture Center, Building 7  
Highline Community College  
2400 So. 240th St. Des Moines, WA  
Admission: FREE

Call 878-3710 Ext. 535

# Religion

## Born-again Christian heeds call to ministry

By WENDY CULVERWELL

Federal Way's oldest church, Steel Lake Presbyterian, has a new neighbor, Federal Way's youngest church, The Potter's House.

The 2-month-old addition to the Christian Fellowship Churches association is meeting in quarters recently shed by the Wesleyan Church in the Rhoades Realty office at the corner of Pacific Highway South and South 304th Street.

The fledgling church is an offshoot of another Christian Fellowship — the Potter's House Church of Everett. At its helm is Wally Mencavage, a construction worker who in his own way typifies what the fundamentalist movement is all about — reaching out to those who aren't involved with Christianity.

Mencavage and his wife, Teri, elected to move to Federal Way to start their first church for two reasons.

First, Wally Mencavage had worked on construction projects



Teri and Wally Mencavage

here in the past and remembered it as a good community, one where existing churches don't mind sharing their turf with newcomers.

THE OTHER, more spiritual,

reason is the opportunity for evangelism here. Despite the more than 70 churches already in existence in Federal Way, Mencavage believes a large portion of the residents are not Christians.

They haven't been reached, he said, because they haven't received the gospel in a way that meets their needs.

Those are the people Mencavage, a born-again Christian, wants to reach with the gospel and with his own story.

Before he became a Christian 4½ years ago, Mencavage said, he was a "hard-core sinner," involved with drugs and alcohol and uninvolved with religion.

Even after his wife became a Christian, he wanted to remain uninvolved. He was eventually converted by one simple message, found in Romans 10:9-10: If you accept Jesus, you will be saved. It worked for him, he believes, because it offered something concrete to believe in, something he had never

found in his earlier church experiences.

For Mencavage, that simple message took on physical proportions. In making a total commitment to God, he said, he lost his desire for chemical stimulants.

HE LIKENS being a Christian to a high that doesn't leave.

"That was exciting for me," he said.

He was stirred to spread the message when other problems, including financial ones, began to resolve themselves. Again, he attributed the changes in his life to God.

To prepare himself for his new calling, Mencavage joined the Everett church, which is part of the larger Christian Fellowship Churches which grows by sending members out on their own. In Everett, he went through discipleship training and spent much time in Bible study.

The Everett church and Mencavage's construction work are funding the new Potter's House

church.

Mencavage is not an ordained minister, but the 10 or so people who have come to be Potter's House members call him "pastor." A typical service includes a sermon, singing and praying.

"It's scripturally based," he said.

Though he's new at the business of church leadership, Mencavage said he particularly enjoys preaching, letting God work through him.

He had hoped to have a larger congregation by now, but is not discouraged by his group.

"WE HAVEN'T the impact we want yet," he said. "It takes a little more organization and detail work than you would think from just looking in."

Potter's House took its name from Jeremiah 18:2, which calls for Jeremiah to go to the "potter's house" where Jehovah will cause him to hear his words. It is a name commonly used by Christian Fellowship groups, in-

cluding his parent church in Everett. "Victory Chapel" and "The Door" are two other common names.

The new church accommodations may foretell of good things in Potter's House's future — the previous tenant, the Wesleyan Church, has moved into its own quarters on Sixth Avenue South. The space it left behind is ideal for a new church. The wall between two offices has been knocked down, creating one big room for a sanctuary. The entry hall is just large enough for a coffee maker and a small gathering of people.

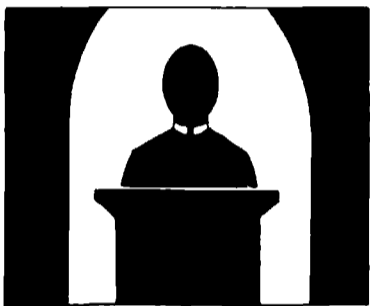
The church holds services Sunday mornings and evenings and Wednesday evenings. Special programs will be scheduled to draw in the curious, and a Christian rock band, "Inheritance," will perform for the church on June 1, though the time and location haven't been determined. For information, contact the pastor at 941-5170.

## Nazarene churches adopt program for social action

By THE REV. ROBERT ULRICH  
Federal Way  
Church of the Nazarene

At the recent assembly of the Washington-Pacific District Church of the Nazarene (80 churches this side of the Cascades from the Canadian to the Oregon borders), the following Christian Action report was adopted:

"It is very evident that we are reaping as a culture a harvest of pain as a result of our misguided quest for pleasure and possessions. Over the past three decades, we have lost sight of



Pastor's Corner

the importance of teaching our young about honesty and integri-

ty. 'Do what is right' has been replaced by 'do what works.'"

"The lewd, the violent, the morbid no longer disgust us. Instead, they have become the central focus of our entertainment. Actions that would have caused people unbearable shame in the not-too-distant past now qualify them as special guests on talk shows.

"We have little or no regard for the Ten Commandments and very few of our young even know what they are.

"We market the illusion of happiness found in alcohol and irresponsible sexual behavior to our young and then form committees to discuss why they exhibit such self-destructive behavior. We have reached such a level of vulgarity in our entertainment and human relationships that even those who do not proclaim the name of Jesus are saying, 'enough!'"

"The church has often been accused of being negative and repressive but is not the one promoting 'Just Say No.' In this climate of moral confusion, we dare not be silent.

"To protect ourselves, we are tempted to build fortress walls

around our churches. If we give in to a defensive posture, we lose the essential message of Christianity. We must not allow our light to be hidden at this critical point in history.

"You and your church should be involved in the process that sets standards for school and government. It is always easier to work for change from a position of participant rather than adversary.

"There are many organizations that can be of assistance to your church. Be informed about what is going on in your schools. They are the heartbeat of your community.

"Let your church be the first to support and praise those who take a stand for moral values. When confrontation is in order, make sure that all information is factual and well prepared. The church has too often appeared unnecessarily foolish in

the eyes of the world because of misinformed reactionaries.

"Follow the leading of the Holy Spirit in determining which battles should be fought.

"When others are saying, 'Just Say No,' we should be saying, 'Just Say Yes.'" Yes to the peace, freedom and directions that are found in the good news about Jesus. I am not ashamed of the gospel because it is the power of God for the salvation of everyone who believes." (Romans 1:16.)"

The Church of Jesus Christ is still an awesome force in our world for good. Its light still shines brightly and is still a lighthouse of hope for the lost

and lonely. To find peace, joy and freedom, just "Say Yes" to Jesus.

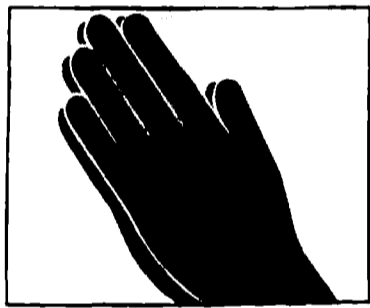
YOUR FAMILY IS WELCOME AT  
**OUR SAVIOUR BAPTIST CHURCH**  
701 S. 320th, Federal Way  
**839-6822**  
8:30 and 11:00 a.m. WORSHIP  
9:45 a.m. FAMILY BIBLE SCHOOL  
6:00 p.m. SUNDAY EVENING SERVICE  
Richard F. Massey, Pastor 927-5325  
George Gulian, Assoc. Pastor 838-7986  
Jim Tiefenthaler, Minister of Youth 838-6028  
Affiliated With  
The Baptist General Conference

## Conference to look at social services

St. Anthony's Catholic Church in Kent will hold an ecumenical conference for people involved or interested in social ministry.

The program will take place from 9 a.m. to 4 p.m., May 20, and will include discussion of social concerns in South King County and ideas which can be brought back to individual congregations.

Tickets, which include lunch, are \$10, \$12 at the door. For more information, call 854-5157. The church is on Third Avenue South in Kent.



News of all Faiths

### Religion section deadline

The Federal Way News publishes a Religion section every Friday. The deadline for submitting news items for the Religion section is noon on Wednesday.  
For more information call 839-0700 or 927-4353.

**St. Luke's Welcomes You**  
**839-0172**  
Sunday Worship: 8:00 & 11:00 AM  
Education Hours: Sun. 9:30 AM  
Certified Day Care, Pre-School and Kindergarten  
Pastor: Victor Hippe  
DCE: Hub Firnhaber  
Youth Director: Teresa Dinger  
Early Childhood Director: Sylvia Iben  
Day Care Director: Kathy Olsen  
Lutheran Church (LCMS)  
515 So. 312th St. Federal Way

**Baha'i Faith**  
MANY PATHS-ONE GOD  
**872-9030**

**CHRISTIAN LIFE PREP SCHOOL**  
Traditional Classroom Setting • A Beka Christian Curriculum  
Small Class Sizes • Now Accepting Enrollments for Fall  
**PRE-SCHOOL**  
**KINDERGARTEN**  
**FIRST-FOURTH GRADE**  
**838-7522 927-4627**  
Committed to Academic Excellence and Character Training

## Federal Way's Guide To Worship

**'COMMENCEMENT' IS NOT AN ENDING BUT A NEW BEGINNING**

The chances are that you, someone in your family or some friends of yours will be graduating from high school or college this year. Therefore, you will either participate in or attend what they call the "commencement" exercises. This implies that graduation, as the act of leaving school, is not an end but a beginning. Whether you are a teenager or an adult any-ager, you know that all of life is a learning experience, and that walking out of those halls of ivy for the last time merely means a transition from one school to another. Your House of Worship is a school, where you learn about life itself and the Creator who gave it to you and taught you how to live it in the right way; and that its importance is not its length, but the quality and purpose that you give it.

The best educated human being is the one who understands most about the life in which he is placed.  
-Helen Keller

"Continue now in the things which thou hast learned."  
-II Timothy 3:14

**ELCA FAMILY OF GOD LUTHERAN CHURCH**  
Worship Service 9:45 AM  
Christian Learning 11:15 AM  
Preschool Registration For September School Now Being Taken  
James M. Christianson, Pastor  
36016 1st Ave. So.  
Federal Way **874-5232**

**JOYLAND CHRISTIAN CENTER**  
5315 29th St. N.E.  
(2.6 miles west Hwy. 99 on 356th)  
WORSHIP SERVICES: 10:30 a.m., 6 p.m.  
SPECIAL MESSAGE EVERY SUNDAY  
(nursery provided)  
**952-4JOY**  
Rev. Joe Rex Finley II, Pastor

Federal Way Lutheran Parish (E.L.C.A.)  
**CALVARY LUTHERAN**  
2415 S. 320th St. **839-0344**  
Norman B. Nelson, Senior Pastor  
Gary R. Jepsen, Pastor  
8:30 & 11:00 am Worship  
9:40 am Sunday Church School (2 yrs - Adult)  
Adult and Junior choirs  
Communion 1st & 3rd Sundays (Nursery provided)  
839-0344 Lutheran Counseling Network.  
Joan Anderson & Fred Wegener

**BIBLE FELLOWSHIP**  
• Spirit Filled  
• Praise & Worship  
• Fellowship  
**SUNDAY WORSHIP**  
1:00 p.m. & 7 p.m.  
33919 9th Ave. So., Federal Way  
Pastor F.E. Earlywine  
Phone: 874-4588

**LIVING WORD LUTHERAN BROTHERS**  
33919 - 9th Ave. S. Fed. Way  
Sunday School & Bible Class 9:45 am  
Worship Service 11 am  
Nursery Provided  
Call **839-2112** For Information  
EVERYONE WELCOME!  
Arnold J. Olsoe - Pastor

**BETHEL CHAPEL**  
414 SW 312th **839-2486**  
Sunday Services  
Sunday School ..... 9:45 am  
Morning Worship ..... 11:00 am  
Evening Service ..... 6:00 pm  
Wednesday  
Family Night ..... 7:30 pm  
All Age Activities  
Lester Frye, Pastor

**SEATAC BIBLE CHURCH**  
Meeting at:  
Lakeland Ele. School  
35675 32nd Ave. So.  
Auburn, WA 98001  
**SUNDAY WORSHIP SERVICE 10 AM**  
**939-6115**

**SUNRISE UNITED METHODIST**  
10 a.m. Worship and Church School (Nursery Provided)  
Lake Grove Elementary-303 SW 308th  
Chuck Hindman-Pastor **927-8280**

**CAMPUS WAY COVENANT CHURCH**  
Carl J. King, Pastor **839-1777**  
S.W. 320th and 7th Ave. S.W.  
Sunday School 9:45 a.m.  
Sunday Worship 11:00 a.m.  
Child Care Center **839-3151**

**SEED OF LIFE BAPTIST CHURCH**  
"For Spirit Filled Worship - Join Us!"  
Sunday Worship - 12:30 pm  
Wednesday Prayer and Bible Study - 7:00 pm  
Held at St. Theresa's Chapel  
3939 S.W. 331st, Federal Way  
**588-4983**  
Rev. Samuel W. Franklin

**MARINE VIEW PRESBYTERIAN CHURCH**  
8469 East Side Dr. NE, Dash Point  
Tacoma, Washington  
**927-0557**  
WORSHIP: 8:30 & 11:00 am  
EDUCATION HOUR:  
All ages, 9:45 am  
Nursery provided all services  
Dr. Robert A. Mills, Interim Pastor  
Rev. Mike Pyburn, Assoc. Pastor  
Cheryl McDermott, Youth Director  
Wendy Karolas, Children's Director

**Crossroads Assembly**  
27103 Pacific Hwy. So.  
(located in Sportsworld)  
Sunday Service 10:30am  
Wednesday Bible Study 7:00pm  
For Christ Jesus is Our Peace  
**244-5612**

**CHRIST'S CHURCH AT FEDERAL WAY**  
"Christ is Our First Love, His Word Our First Priority"  
• Dynamic Bible Teaching • Outstanding Youth Programs  
• Uplifting Praise & Worship  
**SUNDAY**  
Bible School 9:30 a.m.  
Morning Worship 8:00 a.m. & 10:45 a.m.  
Children's Church 10:45 a.m.  
Evening Worship 6:00 p.m.  
**WEDNESDAY**  
Junior High 7:00 p.m.  
Senior High 7:00 p.m.  
Family Night 7:00 p.m.  
Adult Study 7:00 p.m.  
**941 S. Dash Point Rd. Federal Way**  
(Next to Sacajawea Jr. High) **941-2711**



## Jefferson, Mead coaches to meet again

By TIM CLINTON  
Even though they hail from the extreme eastern side of the state, Thomas Jefferson head boys' soccer coach Jim Judson sees something familiar about the Mead Panthers.  
That something is Panther head coach Dick Colin, who led his team into the state championship game against Judson's Raiders in 1986, only to lose by a 3-2 score in double overtime.  
The two coaches will meet again at 3 p.m. tomorrow at Seattle Memorial Stadium in this year's state quarterfinals.

"I have a lot of respect for what he does with his players," said Judson. "They play the game the way it was intended to be played."  
This year Mead won the Greater Spokane League title and boasts an 18-0 season record, while TJ split the South Puget Sound League crown with Decatur and stands at 10-2-2.  
"In the Greater Spokane League, over the years the strong horse has been Mead," said Judson, whose team also met the Panthers in another playoff before 1986. "They dominate."

The Raiders have a history of their own to uphold.  
Judson has led Jefferson all the way to the state title five of the last six years, with the only miss being in 1987. The Raiders are making their seventh straight playoff appearance, and won five consecutive SPSL titles outright before last year's second place finish and this year's co-championship with Decatur.  
"This is what it's all about," said Judson. "It's an exciting situation. We're going in as the underdog. We can reflect on what happened a year ago, but what was done a year ago is past. We've had to prove time and time again that we have a real good program here."  
JUDSON does not expect an

overwhelmingly physical game like his Raiders saw in a 1-0 opening-round win over Olympic Monday.  
"They don't physically beat up on you in terms of knocking you down," said Judson. "They like to play a possession-oriented kind of soccer. They like to move forward with good ball movement."  
"They have the tendency to have players in motion, always moving and looking for the ball. They like to switch their attack quickly and break through. It creates good passing angles between players, and it's harder to match up defensively when they make the switch."  
In order to stop the Panthers' attack, the Raiders will be looking to apply pressure on defense.  
"We have to have anticipation and step up the defense into the passing lanes," he said. "We'd like to make them have to think quicker than they'd like to think, and keep them from making the proper execution off the proper decision. I'm concerned that we get good pressure to stop their buildup and stop their tendency to switch."  
The midfield play will be pivotal in the contest.  
"It's very important to take control of the midfield," said Judson. "If you take control of the midfield, you have a better than 50 percent chance of winning. Most games are won or lost in the midfield."  
OFFENSIVELY, Judson points out that TJ will have to take better advantage of whatever opportunities it gets close to the goal, since the opportunities get fewer and farther between with the tougher state competition.  
"When we get to the opponent's 18 yard line, we tend to flatten out," he said. "We need to take it to the goal, and we need to get our shots off quicker. Crashing the opponent's goal is a big issue on offense. We've got to cash in on our opportunities."



photo by Paul T. Erickson

TEMPERS FLARED as Thomas Jefferson defeated Olympic Monday, but Raider head coach Jim Judson expects a less physical game against Mead tomorrow. Olym-

pic's John Tell (11) is pictured trying to keep teammate Bryan Fossum (10) out of trouble as TJ's Jeff Clayton, Brad Kolbo and Dan Parnell (left-to-right) look on.

## Gators win physical playoff opener, 3-0

Decatur put away a physical Mountain View team, 3-0, in front of a hostile crowd in Vancouver as the state boys' soccer playoffs opened Tuesday.  
"They came after us pretty hard," said Gator head coach Rick Dennison. "They played real physical. With the home team and the home crowd, we were beginning to wonder how long they'd get away with it."  
The game did get under control eventually, though, and Decatur went on to victory over the Southwest Washington champions.  
"The refs got control of it, and that helped," said Dennison. "We wouldn't be able to compete with them physically. They were intentional fouls, tackles from the wrong side and that kind of thing."  
Now the Gators will be able to play in neutral territory closer to home, as they take on Shorecrest in the state quarterfinals at Seattle Memorial Stadium tomorrow. The action will get underway at 7 p.m. Decatur has a 12-4 overall record.  
Shorecrest is coming off a 3-2 victory over Roosevelt in its playoff opener Tuesday.  
"One kid scored all three of

their goals," said Dennison of Shorecrest. "While nobody is a real star here. Sean Young scores well and you have to watch him, but if you watch him too close someone else scores."  
DECATUR had three different players score at Mountain View.  
Young struck for the first goal with 2:15 to play in the first half, then Jamie Carter put one into the back of the net two minutes into the second half.  
Dan Heidal concluded the scoring eight minutes later on a ball from the corner.  
Even though the Gators posted the shutout, Mountain View did have its chances.  
"They looked like they could score at any time," said Dennison. "But we kept forwarding all of their tries, and they had a couple off the cross bar."  
Before the game was over the Mountain View players showed their frustration, and two wound up getting red card ejections.  
"They've only had 10 goals scored against them all season," said Dennison. "They're not used to losing."

## Tapps Island run slated

Monday, May 22, marks the final day to pre-register for the ninth annual Tapps Island 10-Kilometer Run, slated for Saturday, May 27.  
This run covers 6.2 paved miles of scenic Tapps Island, located on the north side of Lake Tapps between Auburn and Sumner.  
Pre-registration fee is \$6. Late entry fee is \$8, for entries received after May 22 through race day. Entry forms are available

at local sporting-running stores in King and Pierce counties, as well as the Auburn Rax Restaurant, Tapps Island clubhouse and Lake Tapps sales office in Bonney Lake.  
Entry forms may be mailed by sending a self-addressed, stamped, legal-size envelope to Tapps Island 10K Run, 19927 Island Parkway, Sumner, WA, 98390.  
For further information call 862-7467 evenings or 862-7828 days.

## Athletic camps planned

Athletics Northwest is sponsoring unique football and wrestling camps this summer at Camp Berachah near Auburn.  
These camps include training in motivation, nutrition, drug awareness and weightlifting and feature some top names in their respective sports.  
Curt Warner, Paul Skansi and Eugene Robinson of the Seattle Seahawks will appear at the

football camp, along with Steve Pelleur of the Dallas Cowboys and Dave Brown of the Green Bay Packers.  
Anthony Amado, a 1988 Olympian, will be at the wrestling camp, as will John Burkeholder, a national champion body builder.  
For more information, call Doug Smith at 643-3874.

## Eagle girls open playoffs today

By TIM CLINTON  
The Federal Way girls' softball team will be putting its season on the line today when it takes on Kentwood in a 4 p.m. game at Sprinker Recreation Center in Spanaway.  
A loss in the West Central District opener and the Eagles are out, while a win advances them into a 7 p.m. game with Port Angeles.  
"The first game is real important," said Federal Way head coach Doug Baldwin. "It's the first key, and you have to open the door."  
From there, as Baldwin put it, "a whole lot of things can happen."  
A win over Kentwood and then

over Port Angeles puts the Eagles into the WCD semifinals at 2:30 p.m. Saturday and clinches a state berth. The championship will be played at 6:15 p.m. Saturday, with the semifinal losers playing for third place at 5 p.m.  
A loss to Port Angeles would drop Federal Way into a loser's bracket game at 11:30 a.m. Saturday. The winner of that game plays for fifth and sixth at 3:45 p.m. Saturday, while the loser plays at the same time for the seventh and final state berth.  
EVEN THOUGH the Eagles finished second in the South Puget Sound League with a 14-6 record and Kentwood is the

North Puget Sound League's No. 4 seed after tying for third at 11-7, Baldwin does not want to overlook the Conquerors.  
"You always know the NPSL teams are strong, so it doesn't matter if they're the fourth seed or what," said Baldwin. "We know we have to play extremely well to be competitive."  
Baldwin has high praise for his infielders — first baseman Eileen Aki, second baseman Kathy Badgley, shortstop Erin Pellant, third baseman Shannon Sehlin and pitcher Megan Despain.  
"They have all been making great plays," he said.  
Aki has also been hitting near .500 all year, and has hit five

home runs.  
Standing out in the outfield is left center fielder Jenny Mahlstedt, who has also stayed around the .500 mark.  
Federal Way's left fielder has been Heidi Saheli, with Jennifer Wise in right center and Nancy Jetton in right. Ginger Hines is the Eagles' starting catcher.  
Baldwin will miss today's action, as he will be with the Federal Way golf team at the state tournament in Kennewick, but he will be back Saturday.  
"I want to be there with them, but unfortunately the two sports I coach have tournaments at the same time," said Baldwin.  
Assistants Mark Cole and Ken Price will fill in for him today.

## Golfers begin state tourney action

Federal Way and Decatur will both be sending two golfers into today's state tournament action in the Tri-Cities area.  
Chris Vance of the Eagles will be playing in the boys' tournament at Canyon Lakes in Kennewick, while teammate Sara Berlin will play at Sham-Na-Pum in Richland along with Shelby Cole and Corey Gibson of the Gators in the girls' tournament.  
It will be the first time that the girls have had a separate tournament.  
"I think it's great the girls have their own tournament," said Decatur coach Jim Von Doehren. "I mean, you don't put

back in October," said Baldwin. "That's the highest finish I can recall for a Federal Way golfer. It's a fairly challenging course there at Canyon Lakes."  
Meanwhile, Berlin, Cole and Gibson will be playing just three miles away at Sham-Na-Pum.  
Von Doehren played a practice round with Cole and Gibson Monday, and liked what he saw from both.  
"Both hit well," he said. "Corey putted great. Shelby played well the whole round and her game is peaking at the right time. She is confident, and in golf you have to have your confidence in your swing and in putting the ball."  
"He was playing very well

back in October," said Baldwin. "That's the highest finish I can recall for a Federal Way golfer. It's a fairly challenging course there at Canyon Lakes."  
Meanwhile, Berlin, Cole and Gibson will be playing just three miles away at Sham-Na-Pum.  
Von Doehren played a practice round with Cole and Gibson Monday, and liked what he saw from both.  
"Both hit well," he said. "Corey putted great. Shelby played well the whole round and her game is peaking at the right time. She is confident, and in golf you have to have your confidence in your swing and in putting the ball."  
"He was playing very well

Cole is a senior, while Gibson is making the trip as only a freshman.  
"It's a great experience for a ninth-grader to play in a state tournament," said Von Doehren of Gibson. "She hits the ball real well. As the years go by she'll be a good player for us."  
The Eagles' Berlin is a sophomore.  
"She has been working real hard," said Baldwin. "She has been practicing at Twin Lakes, and hitting range balls at North Shore."  
Both teams left yesterday and practice rounds were planned, and they will return tonight after the tournament.

## Records fall in Highline Swim Club meet

Two Pacific Northwest Swimming records were broken May 13 as Highline Swim Club won the North-South Challenge Cup Swim Meet.  
The meet involved 12 teams from the North and South Divisions of Pacific Northwest Swimming. Highline's winning performance led the South Division to a win over the North Division representatives.  
The meet was highlighted by two record breaking performances in the 10 and under boys' age group. Joel Shapiro of the Central Area team and

Highline's Luke Shellhorn locked in a 50-yard butterfly battle. Shapiro (29.92) captured first place edging Shellhorn (29.95) by three-hundredths of a second. Both swimmers eclipsed the previous PNS record of 29.99 seconds set by Ugar Tanner of Chinook Aquatic Club (Mercer Island).  
Several other swimmers had a big day in this meet. Mary Carr and Cheryl Nordness combined to sweep the 15-18 girls' events for Highline. Nordness took the honors in the 100 fly (1:13.10)

and Carr won the IM, back, fly and free events. Elizabeth Schukantz won the 11-12 girls' 100 breast for Highline.  
Sean Ormsby lead a 1-2-3 Highline sweep in the 200 yard IM for 13-14 boys with Ken Van Pool second and Dick Fain third.

Highline's Dan Palin dropped nearly four seconds off his personal best time to win the 13-14 boys' 100 breast. Fain took the 100 back while Van Pool garnered firsts in the 100 fly and the 100 free to complete a Highline sweep.

## Correction: SWU tryouts

The Southwest United Soccer Club tryouts for the girls' U-11 team (born in 1979) will take place from 12 p.m. to 2 p.m. tomorrow at Lakota Field instead of 2 p.m. to 4 p.m. as was reported in Wednesday's paper. For more information call coach Rick Hughes at 838-9260.











## Updated council results

### POSITION 1

Ethan "Rick" Allen  
1,164  
Mary Gates  
2,402  
Bill Shortt  
1,262

### POSITION 2

Alfred Frank  
634  
Mark Freitas  
1,262  
Fred Jaber  
259  
Joel Marks  
2,199  
F.W. "Bill" McConnell  
433

### POSITION 3

"Jo" Asbury  
528  
Lew "Lew" Drohman  
322  
Debra Ertel  
2,779  
Dave Froyalde  
395  
Charles "Ben" Gittings  
326  
L. "Larry" Jones  
67  
Vance Lelli  
301

### POSITION 4

Elaine Cook  
1,406  
Art Hagberg  
213  
Harold Johnson  
226  
Ray Tomlinson  
720  
Thomas Trigg  
75  
Jim Webster  
2,100

### POSITION 5

James Handmacher  
2,245  
Michelle Lewis  
437  
Stephen Massey  
178  
David Wallace  
481  
R.T. "Bob" Wood  
1,371

### POSITION 6

Homer Anders  
165  
Richard Feutz  
823  
Kenneth "Kap" Pease  
216  
John Ridley  
986  
Robert Stead  
2,562

### POSITION 7

Merva Cheha  
210  
Don Miller  
823  
Ken Poyneer  
69  
Raymond "Ray" Sherman  
477  
Lynn Templeton  
1,704  
Phil Watkins  
1,501

Results reflect 100 percent of the precinct returns. About 2,000 absentee ballots will be counted today.

# Finalists plan for fall campaigns

Continued from A-1

Gates said. "Beyond the good candidates; I've met so many good people."

For Jim Handmacher, who ended far ahead in Position 5, the future holds more campaigning and hard work, he said. After a short break, Handmacher said he planned to put together an organized campaign staff and to work with the Federal Way First! Transition Team on issues that will confront the new city council once it takes office.

EVEN ONE of Handmacher's opponents, Dave Wallace, who finished a distant third place, was pleased with the election results.

"There are a lot of good people here," Wallace said. "Federal Way's going to have a good council."

Jim Webster, the clear first-place winner in Position 4, echoed Wallace's opinions.

"I think in each position Federal Way will have a good city council member," Webster said.

Webster said his campaign strategy will be just to run as himself and not against anyone else.

"I don't want to run against anyone," he said.

In the Position 2 race, Joel Marks was far ahead of second-place finisher Mark Freitas. However, Freitas was gleeful about the results.

"I'm elated," Freitas said. "For never having run for anything...I'm very pleased. I didn't get my campaign brochures out until last week. I did this by the seat of my pants."

Freitas has some distance to make up on Marks, who also won in the 1985 city council election when incorporation was defeated. The two candidates' strategies are somewhat different.

Freitas said he looks forward to one-on-one debates with Marks about the issues. Marks said he plans to "play golf" now that the primary campaign is over, but will soon take another



photo by Paul T. Erickson

THE FINAL Federal Way City Council primary election results are posted by Maryann Mitchell, an incorporation leader, with the help of Bev Tweddle, Federal Way Water and Sewer District commissioner, at an election party Tuesday evening.

Tuesday's election reduced the number of candidates from 37 to 14. Those 14 candidates will face off in the Sept. 19 final election.

look at his campaign strategy.

SEVERAL VOTERS polled on Tuesday said they based their judgment not on just the issues, but also on candidates' backgrounds.

"I was looking for someone who wanted controlled growth," said Dorothy Fordham. "I also wanted someone who was concerned about zoning, parks and growth."

Fordham said she based her judgment on articles she read in

the newspapers.

Another voter cast her ballot for candidates who seemed honest and fair. Barbara Imbrie said at least four candidates rang her doorbell looking for support.

Linda Haley joked that her husband, John, just voted the way she told him.

"Don't you pay any attention to her," John responded. "We were looking for people

who wanted to limit building and have a moratorium on growth," John said.

At least 10 candidates called on the Haleys in their Twin Lakes home.

The number of candidates may have been considerably reduced, but it's unlikely Federal Way residents will remain undisturbed by those still in the race between now and Sept. 19.

After the council takes office, it has until March 10, 1990, to officially incorporate Federal Way.

This first city council is considered by state law to be a transition council and all terms are for two years. In the 1991 election there will be four positions that will be for four-year terms and three positions will be two-year terms. After that, all positions will be four-year terms.

## Transition team considers hiring consultants

By KURT HERZOG

The Federal Way First! Transition Team is preparing to hire a number of consultants to study a variety of issues that will confront the new city of Federal Way.

The self-appointed advisory group is made up of about 25 Federal Way residents, most of whom have been active in community issues for several years and helped with Federal Way First!'s pro-incorporation effort.

The team has set its sights on helping the still-to-be-elected city council by gathering information that the council will need once it takes office after the Sept. 19 final election.

Many of the issues will be studied by the citizen members of the team; however, some issues are too complicated for laypeople and the team is considering hiring expert consultants, according to Maryann

Mitchell, team chair.

THE CONSULTANTS would be paid with money donated to a blind trust and administered by Kent Stepan, a local civil engineer. Stepan has received at least \$14,000 so far, according to Mitchell. Stepan knows who the money is from, but is not to tell any team members who their benefactors are.

The "double-blind" fund was arranged so that the team wouldn't have the appearance of being in the pocket of any business or other interest.

"We need to hire someone to help pull it all together," Mitchell said.

The team is considering hiring consultants to study transportation, land-use and legal issues, among other subjects.

Among those who may be hired is Dick Burris, a former transition team member. Team members have discussed hiring Burris to update the Federal

Way Community Plan, the document King County uses to decide where and what kind of development will occur in Federal Way.

However, at least two team members balked at hiring one of their fellow members. Consequently, Mitchell announced at the team's weekly meeting Monday that Burris had resigned from the team because he was being considered as a paid consultant.

BURRIS WILL make a proposal to the team's steering committee, which will then decide if he should be hired, Mitchell said. The entire membership of the team also must vote on the hiring, she said.

Burris is Burlington Northern yardmaster who has been active for many years in local land-use and transportation issues. He also works as a land-use consultant, is a member of a local land-use watchdog group called DIRE (Development Impact

Resistance Exercise) and was on the 1985 Federal Way Community Plan Update Committee.

While he has no formal land-use training, he is well-versed in county land-use issues and recently successfully argued an appeal to require developers of the Regency Woods neighborhood commercial center to complete an environmental impact statement (EIS).

"I'm damn good at what I do," Burris said. "Would you work for no money?"

Burris and Mitchell say they've been criticized because of the possible hiring.

"(Consultants) will tell us what we need to know to get the job done," Mitchell said. "I think it would be a shame to do half a job."

A PART OF the criticism may just be the result of the inevitable strong feelings many members and residents have

about the new city and about what the role of the transition team should be.

"We're new at this," Mitchell said. "There is no formula to go by. Something we say may be amended tomorrow."

The team also is considering hiring Judy Stoloff, a consultant who is working with groups in Tukwila and Renton on possible annexations there, Mitchell said.

The team is looking at office space in the area it can rent or use at no cost and is also considering hiring a small staff.

The team hopes to include all 14 remaining city council candidates in its meetings and projects. Many of the candidates have expressed an interest in working with the team.

The group meets 7:30 p.m. each Monday at the former fire station at South 312th Street and 28th Avenue South. For more information, call 874-8405.

## Development triggers scrutiny from residents

Continued from A-1

at one time, owned by Venture Partners, a Kirkland firm. But Bontrager divided the plat three ways, selling two parcels.

He sold a 125.5-acre parcel to New Concept Homes of Bellevue for the development of 436 single-family homes. Four large divisions of the single-family lots will sit next to the Milton border and throughout most of the middle of the rectangular plat.

A second 48.5-acre parcel Bontrager sold to Intermark Interests, a development firm from San Francisco. Intermark plans to build 492 apartments in 40 buildings ranging in size from four-plexes to 18-plexes. This multi-family housing complex will sit in an upside-down and backwards L-shape along the northeast corner of the rectangle.

THE THIRD portion Bontrager kept for himself to develop—a 9-acre commercial section that will sit just off Kit Corner Road. Bontrager said he doesn't know yet what kind of businesses will fill the center.

Although an environmental impact statement (EIS) was completed for the overall plat as far back as 1978 and updated when Venture Partners bought it in 1986, site work has begun

only recently at the three portions.

At the single-family housing site, New Concept Homes began site work in July 1987. Since then, the firm has built a maze of cul-de-sacs, installed sewers and storm drainage systems and fire hydrants.

In about 30 to 60 days, the roads should be paved and the site cleaned up and ready for building homes that will cost \$110,000 to \$130,000, said Fred Herber, project manager from New Concept Homes.

In about 90 days, New Concept Homes will go after its first building permit for one of the 20 or 30 lots the firm plans to develop, Herber said. The company already has sold 110 lots to three other local developers.

The 48 acres bought by Intermark Interests will be the California company's first development in Federal Way, though it is involved with apartment projects as close as Renton and Seattle. No construction has started there, only tree removal and land moving. By spring of 1990, however, apartments should begin shooting up, said Keith Dearborn, attorney for Intermark Interests.

JUST THIS month, King County issued a mitigated determination of non-significance (DNS) to Intermark in response to a study by Intermark of soil ero-

sion potential at the apartment site. This study was a requirement imposed by the county in addition to the overall plat EIS in 1978 and 1986, said Dearborn. The DNS can be appealed until May 24.

Independent of the DNS, the county has scheduled a public hearing June 15 on the apartment complex, at which Intermark will present the layout of the whole apartment development—where the buildings will go, parking and where open spaces will be.

ALTHOUGH improvements to the Hylebos were encouraged by BALD, Bontrager said his company has displayed some environmental initiative on its own, contrary to the reputation

of most developers.

Venture Partners hired a Seattle environmental consultant to study the water quality of the Hylebos, and worked with the state Department of Fisheries and another watershed management company to develop the plan to improve the creek, Bontrager said.

SOME FEDERAL Way residents, however, are not so convinced of the developer's good intentions. The Federal Way based environmental watchdog group DIRE (Development Impact Resistance Exercise), is preparing for the coming of Regency Woods by trying to set a precedent for a clean and healthy Hylebos Creek.

Earlier this year, members of

DIRE appealed a county decision that would allow Venture Partners to fill in two ravines on the 9-acre commercial portion that feed into the Hylebos. DIRE said Venture Partners should have to complete an EIS before the ravines could be filled.

Venture Partners fought back, saying that the downstream improvements to the creek would compensate for filling in the ravines.

The King County Hearings Examiner upheld DIRE's appeal in April, and Venture Partners should have the EIS complete in about two weeks, Bontrager said.

Another member of DIRE and a Milton resident, Chris Sherrod, recently complained about

some discolored water he saw being pumped into the Hylebos below one part of the single-family development.

After talking with the state Department of Ecology and meeting at the site with an inspector from BALD, the project manager from New Concept Homes and a fisheries representative from the Puyallup Indian Tribe, Sherrod was partially satisfied.

The discolored water, they decided, was from algae growth in a sediment pond. During construction of the homes, water will continue to be pumped from the pond over a steep bank and filtered through natural vegetation before emptying into the creek.

## Museum makes move to shopping center

Continued from A-1

The historical society used colorful boards covered with news articles and photos to tell Federal Way's history at its volunteer-operated museum at SeaTac Mall. That museum site, donated by the mall, was open from February until late April, when a new tenant signed on for the location.

THE BOARDS OF clippings and photos will make the move to the Federal Way Shopping Center site, but Charnell said that the society would like to add

several new features, including a study area and a back room where society members can video tape longtime residents telling about their lives here.

The society is seeking donations of all kinds, Charnell added, from old photos to antique clothes and furniture for display. Also needed is video recording equipment.

As with the SeaTac Mall museum, the Federal Way Shopping Center site will be staffed by volunteers from the community. The museum hours

have not yet been set, but Charnell said it will likely be open afterwards from Wednesdays through Saturdays.

The shopping center site will be available for an undetermined amount of time.

Grand opening for the new museum site will be May 25 to 27. Refreshments will be served, and activities may include talks by longtime local residents. For information about the museum or the historical society, call Charnell at 946-2136.



**Police**

**Taunts of 'scab' result in assault**

An 18-year-old student told police he was assaulted Monday by a man who taunted him for crossing a union picket line.

The youth told police he is working as temporary help at the Albertson's store in Twin Lakes, which has locked out its striking union employees. The youth was working in the store's parking lot when a man in his 60s, driving a van, followed him, calling him a scab.

The youth said he retorted obscenely, and the man got out of his van and "gently" slapped his face, then left.

Police tracked the man the next day using the license plate number supplied by the youth. The man admitted striking the youth, saying he struck him because he was rude and showed no respect for his elders. The report did not say if the man was a union employee.

The man was cited into Federal Way District Court for fourth-degree assault.

**Schools and police investigate incident**

A 12-year-old junior high student has alleged he was sexually molested May 9 by one of his teachers. The Federal Way School District, however, has said it does not believe enough evidence of the incident exists to warrant suspending the accused instructor or moving him to a different position.

The boy told his brother of the incident, who then told their mother, who called police. The boy alleges the teacher slapped him on the hip and grabbed him in the groin area, then warned him not to tell anyone.

Judy Wall, spokeswoman for the district, said the district's lawyer and administrators have reviewed the case and decided not to take action against the teacher.

Police are investigating the incident, said Sgt. Pat Ferguson of the county's special assault unit.

**Young boy beaten by older students**

An 11-year-old Olympic View Elementary student told police he was attacked and beaten by a group of fellow students Tuesday as he walked home from school.

The boy said an older student began pulling his hair as he was walking near Southwest 329th Street and 26th Avenue Southwest at 4 p.m. When he told the other boy to stop, that boy responded by punching him in the face, he said.

At that point, the boy said, his attacker and five other boys jumped him, knocking him to the ground. They kicked and hit him until another student came along and broke up the fracas, he said.

The boy's mother came to retrieve the boy, and took him to St. Francis Community Hospital where he was treated for a cut under his eye, contusions on his head and face and scratches on his arm.

Federal Way School District security is helping police identify the youths accused of the attack.

Sears regrets to inform you of an error in the May 14 circular. The all sizes one price bedding ad, should have included the following statement, "Queen and King sizes sold only in sets. King requires two foundations." We sincerely apologize for any inconvenience caused you by this error.



When we get to the heart of it, we can prevent child abuse.



Call 1-800-562-5624

(Washington State only)

# Lamonts

## SATURDAY SAVINGS TIME



All Stores Open 9 am-6 pm

**9 A.M.-NOON DOORBUSTER!**  
**SAVE AN ADDITIONAL**

# 15% OFF

- Any Regular, Sale or Clearance Priced Purchase\*
- An unbelievable deal!

**Plus, All Day Storewide Saturday Savings**

**For Her**

- **20-40% Off Selected Coordinates** Misses, Petites, Womens World Koret, Russ, Alfred Dunner Reg. 26.00-60.00
- **14.99 Entire Stock Misses Shorts** Haggar, Ilio, Essentials Reg. 20.00
- **9.99 Misses Campshirts** Colorful striped styles Reg. 14.00
- **30% Off Misses Two Piece Dressing** Laura and Jayne, Peters and Ashley Reg. 34.00-44.00
- **14.99 Juniors Shorts** Palmettos, Just Class Reg. 18.00-22.00
- **20% Off Entire Stock Separate Knit Tops** Misses and Juniors Carmella, Images T-Shirts, Tank Tops Reg. 12.00-25.00
- **9.99 Banja and Fabric Handbags** Double handle, shoulder strap styles Reg. 20.00
- **25% Off Summer Colored Jewelry** Marvella, Encore, OOOps a Daisy Reg. 4.00-18.00

- **20% Off Entire Stock Sunglasses** Fashions for women and men Reg. 12.00-18.00

• **25-30% Off Semi-Annual Foundation Sale**  
Buy 1, Save 25%; Buy 2, Save 30%

**For Him**

- **11.99-17.99 Knit Shirts** Arrow, Chesterfield, Munsingwear, Van Heusen Reg. 15.00-24.00
- **17.99 Arrow Dress Shirts** Short sleeve, solid color styles Reg. 22.00-23.00
- **24.99 Denims and Dress Slacks** Levi's for Men denims, Levi's, Haggar slacks Reg. 30.00-32.00
- **20% Off Entire Stock Socks** Dressy to casual styles Reg. 3.50-10.50
- **19.99 Young Mens Casual Pants** Bugle Boy Reg. 24.00-30.00

- **25% Off Young Mens Woven Tops** Shah Safari, Street Scenes, Santana, Bugle Boy, Saturdays Reg. 20.00-30.00

**For Kids**

- **25% Off Entire Stock Bodywear** Girls Marika styles Reg. 12.00-20.00
- **25% Off Health-tex Playwear** For Newborns / Infants / Toddlers, Girls Sizes 4-6x Reg. 5.00-20.00
- **9.99 Girls 7-14 Spumoni Separates** Shorts and tank tops Reg. 14.00
- **25% Off Girls 4-14 Dresses** Byer and Oops Reg. 24.00-36.00
- **25% Off Boys 4-20 Woven Shirts** By Shah Safari Reg. 16.00-20.00
- **20% Off Boys 4-20 Bugle Boy** Casual pants, short sleeve knit shirts Reg. 18.00-28.00

\*Does not include cosmetics, Guess?, Swatch, Value Price items, Liz Claiborne, Lamonts gift certificates. Offer cannot be combined with coupons. All items are selected unless otherwise noted. Does not include Value Price items.



Visit Our New Stores At: Alderwood Mall, Crossroads Mall, Everett-Greentree Plaza, Factoria Square, Marysville Mall, Northgate Mall, Puyallup-South Hill, Sea-Tac Mall, Silverdale-Kitsap Mall, Tacoma-Highland Hills and Tolem Lake Mall  
Other Convenient Locations: Burien, Lake Forest Park, Capital Mall, University Village, Westwood Village