



**It's over**  
Eagles have rough ending  
A-6

**Land use**  
Residents to fight project  
A-4

**Schools**  
Developers may chip in  
A-14

**Index**

Comment	A-2
Sports	A-6
Real Estate/Classifieds	A-10

**Sunday**  
March 12, 1989

**Excellence in Community Journalism**

# Federal Way News

Vol. 37 No. 31  
Federal Way,  
Washington 98033  
50 Cents

TWIN LAKES MARINE HILLS REDONDO MIDWAY KENT WEST HILL WOODMONT NORTH LAKE WEST CAMPUS

## Police chasing fraud ring

By LYNN KEEBAUGH

Police are searching for the leader of a gang they say is using checks, credit cards and banking statements stolen from mailboxes to defraud banks in two counties.

Three members of the gang already have been arrested, although not charged, and King County police have issued a warrant for the arrest of 29-year-old Belinda Jo Minnick. They consider Minnick the ring-leader of a group suspected of stealing more than \$150,000 from six banks and one credit union in King and South Snohomish counties since October of last year, said Lt. Dan Nolan, department

### Stolen checks turning big profits for forgers

spokesman.

The gang is suspected in 393 cases to date, including some in Federal Way.

TYPICALLY, mail is stolen from middle and upper-middle class neighborhoods, Nolan said. They take personal check replacements that are mailed to customers from their banks, as well as other checks, such as tax return checks.

Forgers fill out the checks us-

ing legitimate customer names and account numbers for endorsements. They obtain the account numbers needed by taking bank statements as well as other statements, said Sgt. Steve Davis of the county's fraud unit.

Davis said the group is sophisticated and also has been known to manufacture or obtain fake identification to make check-cashing even easier.

Forgers usually bank at drive-

up windows, and because the checks are filled out legitimately, identification rarely is asked for, Nolan said.

If a teller asks for identification, or if the transaction appears to be taking a long time, the forger usually leaves. But Minnick is suspected also of going inside banks and befriending and gaining the trust of tellers, Nolan said.

Minnick, who also is known as Grace Swinford, stands 5 feet 5 inches tall and weighs 120 pounds. She has wavy, reddish-brown shoulder-length hair, brown eyes and freckles.

Continued on A-3

## Cityhood returns reach 40 percent

The King County elections division had received a total of 10,851 ballots on incorporation from Federal Way voters by Friday morning.

That's about 40 percent of the 26,509 ballots sent to eligible voters.

Returned ballots for Federal Way's vote-by-mail incorporation election must be postmarked no later than midnight on Tuesday, March 14. Voters may also take their ballots to sealed ballot bags at the Fire District 39 head-

quarters, 31617 First Ave. S., or to the King County Police Precinct 5 (Federal Way), 34004 Ninth Ave. S. Hours are 9 a.m. to 5 p.m. weekdays — 7 a.m. to 8 p.m. on the day of the election.

If you have any questions on the voting process, call the King County elections division at 296-1650.

County officials will announce the yes and no totals at 8 p.m. Tuesday, by which time they expect to have 80 percent of the total return.

## Store stands as reminder

Redondo enjoyed active past

By MELODIE STEIGER

The little gray grocery store at Redondo never really was the center of attention. Flashier attractions stole the interest of the beach community on Puget Sound.

What people remember now are the Redondo boathouse, which later housed three bowling lanes and a dance floor, and which is now the site of Salty's Restaurant. They remember a small amusement park next door, which featured a carousel and train ride.

They remember a huge marina building, located where the fishing pier and diving bell are now. And much more memorable than the store was the skating rink on its north side, which went down in flames one winter night in '51.

The store once sold anything Redondo's residents could want, from socks to kerosene to fishing tackle to beer. And camaraderie was part of the sale, for the store was the meeting place for one of Federal Way's oldest communities.

It was there that news was dispersed, both through the post office it once housed and through the talk of the locals.

Joan Kearns, daughter of one-time store owner Carl Lindstrand, recalled that a trapdoor once allowed her to hang from her bedroom upstairs into the shop's foyer, the unofficial clearinghouse for town news.

That's how, at the age of 5, she learned that the United States had entered World War II. Her head hung from the



### Centennial

trapdoor, and she listened to Redondo's old-timers talk of the war as they quaffed beer.

THE TRAPDOOR may still be there, but no little girls have hung from it for some time. The store is boarded up now. The bedroom windows upstairs are obscured by blinds. Cars park in its lot, but only so patrons can shop or eat at other places.

The store has been surrounded by rumor since it was closed in 1987. Will the latest owner, restaurateur Gerald Kingen, tear it down for a parking lot?

Kingen says no. Although he would like to have more parking space available for customers of Salty's, Kingen says the store will be renovated. He says he wants to house small boutiques and add a classier, updated paint job to its weathered walls.

"It will be better," he said. The Historical Society of Federal Way has entered the scene, too. To ensure that the building will not be razed to make way for a parking lot either now or in the future, the

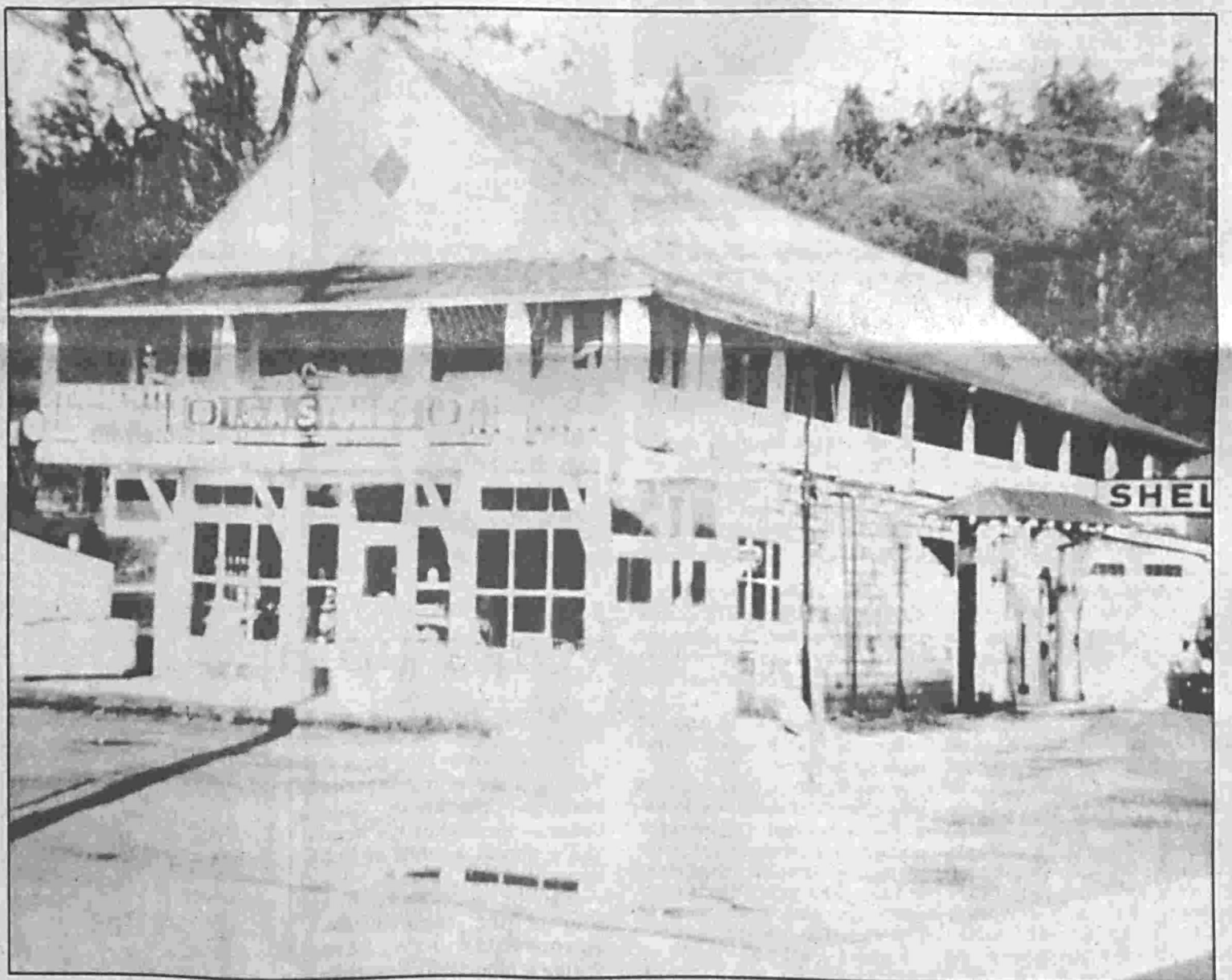


photo courtesy the Historical Society of Federal Way

THE REDONDO GROCERY STORE had changed hands, and names several times by the time this photo was taken in the 1940s. Carl Lindstrand owned it then, and his daughter, Joan Kearns, remembers pumping gas and

organization is seeking landmark status for the site.

On the basis of its age, its aged architecture and its association with the community's past, the grocery store could be designated either a King County landmark or a community landmark. With the former, no

changes could be made to the building without the approval of the King County Landmarks Commission. The latter is an honorary designation, and does not restrict the owner from using or changing the building to suit his needs.

For now, Kingen can do what

he likes with the building.

In a related action, Kingen has offered to donate \$100,000 for the development of Thomas and Frederica Wooten Park, a plot of land located just east of the grocery store and named after the late, longtime

residents of Redondo. As part of the deal, Kingen hopes to use parking there for customers of Salty's.

Steve LaCourse, King County Parks project administrator,

Continued on A-4

## Democrat starts county exec race

By VALERIE DROGUS

Bruce Hilyer said he knows he's the underdog at this point in the county executive race, so he can afford to risk saying what's on his mind.

With that philosophy, the 37-year-old Democrat began his campaign this week by soundly criticizing Republican Tim Hill's performance and leadership during the four years he's held King County's highest office.

Hilyer charged that Hill's efforts have fallen short in three areas crucial to King County government: planning for growth, rail planning and running the criminal justice system.

A lack of action has made those problems urgent, he said, adding that a strong county executive is the only one who can



Bruce Hilyer

get cooperation to solve them.

Although he is a Seattle-area native, Hilyer admits he is less familiar with South King County than with other parts. He grew up in Bellevue, graduated from Mercer Island High School and holds degrees from Cornell University and the University of Washington Law School.

In 1981, he managed the campaign for Seattle's Mayor Charles Royer, then served as Royer's legal counsel for three years. He currently practices business law with a downtown Seattle firm and lives in Shoreline.

HILYER SAID he intends to put a lot of time into visiting South King County during the campaign to understand its needs, too.

Growth is coming to King

County no matter what, and he knows that's a big issue in South King County, Hilyer said.

To solve it, he said he thinks it's generally good to support incorporations and annexations because they bring better service.

With local cities providing local services, county government can look toward the regional problems, Hilyer said.

King County voters aren't against growth, Hilyer believes. But he sees a failure to plan that's created trouble.

"Nothing in the comprehensive plan says let's let growth occur before we build roads," he pointed out.

He is a strong advocate for a rail system, and believes growth

Continued on A-3

**BOOST YOUR S.A.T. SCORE**  
**CALL SYLVAN**  
**NOW!**

- ACT/SAT Exam Readiness
- Increase vocabulary and comprehensive skills
- Improve study habits
- Review math skills



Because success begins with the basics



Also Enrolling For:

- Reading
- Math • Algebra
- Sylvan Clear Writing
- Study Skills
- Readiness (ages 4-7)

**838-0507**  
32717 1st Ave. So.  
Federal Way

# Comment

## In current exhibit, mall makes history

**T**ucked away in SeaTac Mall is a hunk of local history, a fact that may have escaped you. It has not escaped the mall's management.

Even if the motive was only to entice us to shop there more often, the mall's decision to provide space for the display of memorabilia was enlightened. It is a reminder that business can take a leading role in creating a sense of community.

We applaud the mall for this decision, and hope shoppers will drag friends and relatives along to see the exhibit — in the storefront formerly occupied by Children's Corner, near Sears.

The display features clippings and photos of regional interest, and eventually will add mannequins in fashions from the past. Thanks to members of the Historical Society of Federal Way for their part in this display, and for having the good sense in the first place to salvage pieces of our past.

In the midst of a cityhood vote, and still suffering the pangs of growth, we have seen increasing signs of a growing local pride. This exhibit is an example.

City or not, a healthy self-respect for our community is fundamental to protecting our own interests in King County, and nothing seems more likely to enhance that than to let newcomers join with oldtimers in a celebration of our common heritage.

## Street Talk: Should Federal Way's name be changed if it becomes a city?



**Loretta Bauer**  
(Housewife)

"I would like to have it stay Federal Way. I've lived here for 20 years and I like the name."



**Mary Wendt**  
(Housewife)

"It's been Federal Way so long I don't think they should change it. My husband likes Lakota for a name...but I think they should just leave it Federal Way."



**Robert Faris**  
(Self-employed)

"I can't think of anything of fhand that would entice me more than Federal Way. I think it should stay the same."



**Dianne Bartlett**  
(Airline Employee)

"I like Federal Way. I've lived here for 10 years and I'm used to it. It's going to confuse people and cost the taxpayers a lot of money if it's changed."

## I wish someone would vote for me

**Editor:**

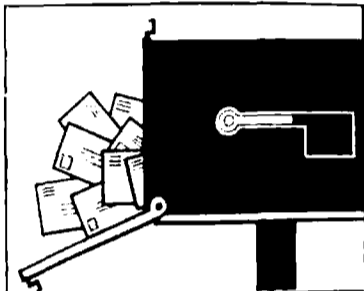
There are only three days left to vote on cityhood, and I wish I had written sooner. Since I live east of I-5, I don't even get to vote. I have to hope that that there will be a new city of Federal Way, and that someday it will see fit to annex the nameless but rapidly growing area where I live. Right now, I hope that those readers who are privileged to vote are voting, and that the incorporation measure is passing.

When I moved here three years ago and studied the map, I was astonished. Most of the suburban areas around both Seattle and Tacoma were unincorporated — not part of any city. My only previous experience with densely populated urban non-city was in Miami, which at least claims to have a form of "Metro" government.

So I marveled at the arrangement here, and wondered how it would all work. I've found out how it actually does work: forests of three-story apartment houses are replacing forests of fir trees in a blitzkrieg, itsy-bitsy two-lane streets are constructed as the main routes to new areas and are instantly jammed.

The undermanned police just offer sympathy and "security tips" when burglars hit eight houses in this neighborhood within a few months. The unplowed snow turns into packed glare ice on hilly residential streets, and now Federal Way is in line to get "vanishing Americana" pop-art funny buildings on Pacific Highway South. To paraphrase Rodney Dangerfield, Federal Way just don't get no respect.

Maybe that's because the people here have humiliated their community by voting down cityhood four times already. If



### Letters

you don't respect your own community, how can you expect others to do so? I've been to two cityhood forums — "aginers" against cityhood say things like "A city here would make my property taxes go up by \$85 a year, and that's not worth it to me!"

Even if that estimate means anything — is that all there is? Both have quoted enough financial statistics to cure anyone's insomnia. But this megillah over taxes misses the heart of the matter!

A vote against cityhood is a vote against taking pride in, and responsibility for, the place we all live. A vote against cityhood is a vote in favor of Federal Way becoming a "slurb." A vote against cityhood is a vote in favor of taxation without representation.

A vote against cityhood is a vote in favor of King County letting a 50-foot-high yellow-green plaster brontosaurus get built alongside Pacific Highway South a few years from now, when some auto dealer wants to one-up the Hat 'n Boots.

I wish I could vote. Would someone out there, who lives west of I-5, please do it for me?

**Chuck Hastings**  
Nameless area east of Enchanted Village



**Pam Waters**  
(Student)

"I think it should stay Federal Way. It's already well-known as it is."



**Conrad Rinehart**  
(Student)

"Keep it Federal Way. I just like the name and it's been known that way for such a long time it'd be kind of hard to change."



**Denise Stence**  
(Student)

"I think I like Federal Way. It sounds so — American, like the Revolutionary War, with the Federals and the Whigs. It's got a ring to it."



**Les Parrett**  
(Security Dispatcher)

"I don't have a problem with Federal Way. I've lived here for years and it works for me."

## Wake up and smell the coffee, Olaf!

Grandpa won't drink my coffee.

He says it's too strong. Taking a sip of my favorite blend — Starbucks Gold Coast — he shakes his head like a pup at a whiff of tick spray.

Then he pours himself a slug of the same brown swampwater he's been drinking since Safeway raised the price on the store brand 15 years ago.

That was right around the time Starbucks opened the first store in Seattle at Pike Place Market. This year, they'll open store number 32, including one in SeaTac Mall, another in Lakewood, and one in Chicago.

My own ignorance about coffee was profound until I took a tour of the Starbucks facility on Airport Way in Seattle. The place is full of folks who can only be described as evangelical. You can't turn a corner in the warehouse without bumping into someone packing a handful of Guatemalan beans around like a rosary.

My tour guide was Kevin Knox, a coffee specialist whose dedication to the product is so vehement I could envision him wearing a coffee bag suit, sleeping on a pile of beans, a blissful grin on his face.

Kevin says gourmet coffee claims only six percent of the national market. In Seattle, the share is higher, because Starbucks has made us more aware of premium coffees. Kevin is even-handed in his regard for competitors like Millstone, who have helped broaden our coffee expertise by putting their bins in area supermarkets.

Starbucks has stayed out of



**Mike Robinson**

the stores, preferring to open its own outlets because that way, Kevin says, they are assured of the quality control from the field to the customers' lips.

If there is a cult figure at the core of the Starbucks mystique, it is a man with an amusing name — Dave Olsen. The name ought to remind you of a long-running series of commercials for Folgers.

But it's only coincidence. Olsen has been the point man for Starbucks for more than a decade. His nose for superior beans is part of the company's lore. Along with a handful of others, he puts every shipment of beans through a rigorous ritual.

It begins with the buying. After years in the business, Starbucks has cultivated an image that is somewhat eccentric. When two growers offer a bean of similar quality, and one is more pricey, Starbucks will pay the premium — as long as the

quality stays high. That's one reason gourmet coffee drinkers wind up paying almost twice the pound-rate for their coffee.

On the other hand, says Kevin, they're getting more bang — and less bite — for their buck. Gourmet coffees are actually lower in caffeine content, contrary to Grandpa's hunch. What makes them more zesty is the longer roasting time. It isn't much, a matter of minutes, in ovens carefully monitored by old-fashioned hands-on roasters like Tom Walters.

Conventional coffee, the kind that sits on the shelf in your kitchen for weeks, is typically grown in regions where moist conditions produce high caffeine levels. But the beans are minimally roasted in vast quantities, which yields that mild flavor Americans call "good coffee."

Good coffee, in fact, should be treated more like fresh produce, says Kevin. Its shelf life at Starbucks stores is never more than eight days. At home, we ought to be buying small quantities, grinding it ourselves if possible, and returning to the store every few days to restock.

The sacrament of making

coffee continues with the boiling of the water, the scooping of the freshly ground beans, and the ritual of pouring. You don't just dump in the water and walk away.

With an elegant swirl, you wet the grounds. Then you wait ten seconds to allow the flavors to release. Then slowly pour the remaining water through the coffee. Use regular grind if you insist, but don't let it sit all morning in a percolator, turning to tar. Buy one of those new-fangled European coffee-makers.

If you need an extra reason to consider converting to Starbucks, this month the company will make cash contributions to Children's Hospital and Medical Center in Seattle for every pound we buy. They saved my son's life at that hospital five years ago, so you know where I stand.

But even if I had no selfish motives, I'd be urging you to try a cup. Once I tasted real coffee, I knew how the Christians felt when they walked among the pagans.

The Norwegians were slow to surrender, I'll bet. It probably took a whole bowl of raspberries before they gave in.

## Cityhood could kill our cottage industry

**Editor:**

Does Federal Way have it all? (Unincorporated Federal Way, that is.) What a package! Magnificent business parks that surpass any in our state; wide luxurious streets; low taxes; low rentals; shopping on every corner; and close to I-5. Federal Way has no slums and has less calls for emergency aid than our neighboring cities.

Cityhood will put us on the map worldwide, so the crooks and derelicts will know right

where we are! Just wait until the city dads bring in their restrictions, choosing which property areas to devalue and eliminating cottage industries. Oh, yes, there's the ecology issue. True ecologists would be living in Enumclaw, or Buckley, not Federal Way.

Therefore, vote NO for cityhood and keep Federal Way like we want it.

**Ivy Gratias**  
Lakota

## County's ballot could have been simple

**Editor:**

All that was necessary (on our ballots) was the word "Incorporation" with one square for YES and one square for NO.

Why could not King County have published this extremely complicated ballot in

newspapers as in other major elections so that the voter could have been forewarned and prepared for the massive, unnecessarily complex ballot?

**Ilene Marckx**  
Brook Lake

## Letters welcome

The Federal Way News/Community News welcomes your letters. Send them to 1634 S. 312th St., Federal Way, WA, 98003.

Please include your name, address and phone number and the name of the general neighborhood in which you live.

For more information call 839 0700 or 927-4353.

## Federal Way News

Published every Wednesday, Friday, and Sunday

G.S. Robinson	Publisher
Mike Robinson	Executive Editor
Brad Broberg	Editor
Chuck Mingori	Sports Editor
Bruce McKnight	Advertising Manager
Dean DiLoreto	Circulation Manager

1634 S. 312th Federal Way, WA 98003



A SEATTLE taxi driver died Friday morning in a two-car accident at Dash Point Road and 10th Avenue Southwest. Washington State Patrol Trooper Robert Duffin investigates the scene at which Norman Rakestraw, 59, was killed when

his car apparently crossed the center line and hit a pickup truck head-on. All three people in the truck were injured but only one was still hospitalized as of Friday afternoon.

photo by Rhonda Davis

## Two people killed in local crashes

Two people were killed last week in separate traffic accidents in the Federal Way area. At 8:05 a.m. Friday, Norman Rakestraw, 59, of Seattle, was killed when the Farwest taxi he was driving northbound on Dash Point Road apparently crossed the center line near 10th Avenue Southwest and hit a southbound vehicle head-on.

Rakestraw was pronounced dead at the scene. He suffered head, chest and internal injuries, a King County Medical Examiner's office spokesman said. The Washington State Patrol said two witnesses saw the taxi cross the center line, but it still is investigating why that happened. Three people in the southbound truck were injured. The

driver, Craig Henning, 28, of Federal Way, received head lacerations and chest injuries, and a passenger, Michael House, 28, of Kent, received head and neck injuries. They were taken to St. Francis Community Hospital where House was treated and released and Henning was reported in stable condition Friday afternoon. A second passenger, Jason Ed-

wards, 19, of Seattle, was treated for minor injuries at the scene. Theresa Brittain, 42, of Auburn's West Hill area, was killed Thursday afternoon when she apparently lost control of her pickup truck and went over an embankment on 65th Avenue South near South 292nd Street. King County detectives say Brittain was northbound on 65th Avenue South at 4:09 p.m. when her vehicle went off the road and onto the shoulder before crossing back into the southbound lane and over a cliff. Her truck came to a stop when it hit a tree. Brittain was thrown clear of the truck and died from massive head injuries.

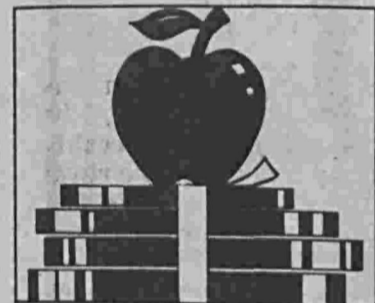
## Lawyer looks at county ex-ec job

Continued from A-1

should be planned to take advantage of a rail line. People voted "yes" last November on rail, and are frustrated with the slow pace of planning, Hilyer said. IF A DEMOCRAT wins the county executive seat, he or she may face a Republican county council, much as Republican Hill now faces a Democratic council. Five of the nine county council seats are up for election this November. But Hilyer said he would hope to put aside partisanship if

elects county executive. He'd like to restore a balance between the executive and council that he feels is lacking right now because of poor communications. The county council has rushed in to fill a leadership void, Hilyer charged. "I'm not afraid of conflict,"

he added, but said it must be a constructive conflict. Hilyer is the only declared Democratic candidate for Hill's spot, but State Representative Lorraine Hine of Des Moines has expressed interest in running. She will decide after the legislative session ends, she said.



### Our Schools

#### Nautilus students win three ribbons

Three Nautilus Elementary School students recently received ribbons at a science and engineering contest held in Seattle. Casey Wagner, a second-grader in Anne Ransom's class, won first place in a biomass competition for kindergartners, first and second-graders. Barry Vaughan, a second-grader in Rosalee Clavey's class, took second place in a crystal-growing contest, and Jennie Roloff, a second-grader in Polly Campbell's class, took third in the same event. Fifteen Nautilus students competed for ribbons in various events, such as the mouse-trap car race, tower building and paper beam contest. The event is sponsored by the Washington Science Teachers' Association.

Introducing the **9%** solution.

Invest in our 9%, 9-month FDIC-insured American Freedom Certificate of Deposit. After an initial deposit of as little as \$10,000, it lets you add on, in increments of \$500 or more, as often as you want\* at the original high interest rate. Stop by American Savings Bank today. We think it's the perfect savings solution.

### AMERICAN FREEDOM CERTIFICATES

9.00% Annual Rate = 9.31% Annual Yield\*\*

\*Minimum balance requirement—\$10,000. Additions of \$500 or more are permitted up to \$100,000.

\*\*Compounded quarterly. Assumes principal and interest remain on deposit at this rate for one year. Substantial penalty for early withdrawal. Rate effective through March 27, 1989.



Respect, concern and understanding. **That's American!**



21 Locations in the Puget Sound Region

Federal Way: 34716 - 1st Ave. S., 927-0677 (Tacoma)/874-4944 (Seattle)  
Auburn: 1436 Auburn Way S., 833-5310

## Police seek tips in pursuit of fraud ring

Continued from A-1

**MINNICK ALSO** is wanted on an escape warrant. She walked away Aug. 2, 1988, from the Radcliff Work Release Center, where she was serving a sentence for forgery.

**WANTED BY** police for questioning along with her is Terry Dean Smith, 27, also known as Dale Swinford. He stands 6 feet tall and weighs 176 pounds. He has brown hair and brown eyes. Businesses and banks can protect themselves from similar forgeries by making sure check-cashers endorse checks in their presence. If a check already is endorsed, employees should cover the endorsement with their hand and ask the check-casher to sign it again, Davis said. Often, the check-casher won't remember the name on the check, or the second signature won't match, he added. Also, always ask for identification.

Davis said community block watches can help prevent the forgers from stealing from

private mail boxes. Residents also should not let their mail stack up and should check on financial statements, credit cards and checks as soon as it appears they are late in arriving. Report losses immediately, he stressed.

"**THIS GROUP** isn't the only group doing this," Davis said. "There are people all over the place doing the same things."

Although the gang police are trying to round up steals credit cards as well, its primary focus is check fraud, Davis said. "They hit on a system that works really, really well." This gang is transient and mobile, working the Interstate 5 and Highway 99 corridors, Davis said.

Police agencies from 15 communities as well as the U.S. Postal Service are investigating the group's activities, said Nolan. Anyone with any information that might help police with their investigation is asked to call the King County Fraud Unit at 296-4280 between 8 a.m. and 5 p.m. weekdays and 296-3311 after hours.

## AUTO LUBE SPECIAL SALE

**\$16<sup>95</sup>**  
Oil Change & Lube  
Hurry Offer Good until 3-15-89

At Auto Lube Express, we cater to your special car care needs. Our Motto is: "We go the Extra Mile"



"We're proud to be Federal Way Chamber Members too!"  
c.v. 1/20\* exp. 3/15/89

**EXPRESS**  
formerly Quik Lube

**Car Care Center**  
32610 Pacific Hwy. So., Federal Way  
838-8699

CLIP AND SAVE

# Fabricland

The complete sewing experience... discover the difference!

# SPRING Sale!

CLOSED  
EASTER SUNDAY  
MAR. 26, 1989

MARCH 12-APRIL 4, 1989  
ALL FABRICS\*

**30%** OFF The Marked Price



BUTTERICK®  
3261/3119



DON'T MISS OUR "UNADVERTISED" ONE DAY SALE APRIL 1, 1989

STORE HOURS:  
Mon.-Fri. 9:30am-9pm  
Saturday 9:30am-6pm  
Sunday 11:00am-6pm

**CENTURY SQUARE**  
32065 Pac. Hwy. S.  
Federal Way  
927-7110  
839-3995

**BURIEN PLAZA**  
120 S.W. 148th  
Burien  
241-7170

- Sew Simple Quilt Tues. March 14, 7-9 pm 4 week class
- New Techniques Sewing Club Wed. March 15, 7-9 pm
- Cut Up Sewing Sat. March 17, 9:30-11:30 am
- Precision Machine Quilting Wed. March 22, 7-9 pm

- Ray Basket Case Tues. March 14, 9-11 pm
- Covered Photo Album Thurs. March 16, 10-11 pm
- Beaded Lany. Fr. Deno Wed. March 15, 11 am

# Fabricland

### PUBLIC NOTICE

Notice is hereby given that the regular meeting of the Board of Commissioners of the Federal Way Water and Sewer District, scheduled to be held at 6:00 p.m. on March 21, 1989 at the Federal Way Water and Sewer Operations Building located at 31623 First Avenue South, Federal Way, WA, 98003, has been rescheduled to March 14, 1989. Robert A. Piquette, Secretary Board of Commissioners FEDERAL WAY WATER AND SEWER King County, WA  
Published in the Federal Way News on March 12, 1989.

# Woodmont residents will fight to save ravine

**By KURT HERZOG**  
Woodmont residents have a well-kept natural secret and they'd like to save it from development.

Barbara Weeks said she's seen deer, hawks and other animals in the ravine next to her home. Weeks would like to save the ravine from a 232-unit apartment complex proposed for their neighborhood.

Centron, a Bellevue development firm, is proposing the Springwood Manor apartment complex at 2136 S. 260th St. The complex would include 25 buildings located on 19.8 acres.

The project would sit next to a 100-foot-deep ravine through which Smith Creek runs on its way to Puget Sound. Neighbors say the ravine has been a treasured environmental haven for decades.

"People who live here have respected it and kept it up," said Weeks, who lives directly adjacent to the ravine and is leading neighborhood opposition to the apartment project.

"We've seen deer here, hawks nest here, raccoons, skunks," Weeks said. "Children have pulled 14-inch trout out of the creek."

With the help of an environmental watchdog group, residents have appealed a King County decision not to require preparation of an environmental impact statement (EIS) on the project. Ultimately, they hope to completely stop the project from being built there.



A 100-FOOT-DEEP ravine is a treasured natural haven near Pacific Highway South and 200th Street in the Woodmont area. Barbara Weeks has lived next to the ravine for nearly 30 years and is upset, along with other residents, about a 232-unit apartment complex that developers are proposing to build next to the ravine. The residents have appealed a county decision on the Springwood Manor complex.

photo by Paul T. Erickson

The newly formed watchdog group is DIRE (Development Impact Resistance Exercise). The group has appealed a number of King County decisions not to require impact statements. The group consists

of several long-time community activists including Debbie Ertel, Dick Burris, Bob Roper, Dale Roper, Francis and Ilene Marcx, Jim Cron and Charlotte Kirkwood.

**DIRE FOUND** out about the

project and appealed the county's Building and Land Development Division (BALD) decision last week. The comment and appeal period on the project ran out March 8.

No appeal hearing date has

been set yet.

DIRE also helped organize two meetings of residents on the project. About 65 residents attended the first meeting at Woodmont Elementary School during a night of heavy snow.

Most residents were shocked to find that the property in the completely single-family residential neighborhood had been rezoned from single-family to multi-family in 1985.

In 1985 the county updated the Federal Way Community Plan and the land was part of 400 acres throughout the area rezoned to multi-family. In 1988, Federal Way led the unincorporated county in apartment unit construction with 1,875 units approved for Federal Way. That's 40 percent of all the apartment units built in the unincorporated county in 1988.

The community plan updating process does not include any formal method of informing people that zoning has been changed, according to Debbie Ertel, DIRE president.

Weeks, who has been a kind of guardian of the ravine for years, spoke against the zoning change to the King County Council in 1985. The council voted to change the zoning anyway.

"I believe in the democratic process...but I thought we'd be notified before this (project) would happen," she said.

**WEEKS,** a retired school teacher who now spends most of her time doing volunteer work,

is primarily concerned about the effect of the project on the ravine and the trees left standing. Someone, Weeks isn't sure who, cut down many trees on the property about a year ago.

However, other neighbors are concerned about the traffic and the effect the apartment complex would have on the character of the neighborhood.

Many residents have lived in the neighborhood since homes were built there three decades ago, Weeks said. Families stay in the neighborhood, she added.

"Sociologically, this neighborhood should be preserved," she said.

DIRE plans to organize a meeting with Centron soon, Ertel said. Ertel and others worked with Centron on mitigating the impact of the 333-unit Greystone Meadows apartment complex nearing completion at First Avenue South and South 312th Street.

Developers met most residents' concerns on that project after an appeal was filed. The appeal then was withdrawn.

"Centron cooperated on Greystone," Ertel said.

Developers typically want to avoid the EIS process because it's expensive and time-consuming. To avoid having to pay for and complete an EIS, developers sometimes try to meet residents' concerns.

Still, neighbors of the Springwood Manor project hope to stop the apartment complex completely.

# Store stands as link to Redondo's days in the sun

Continued from A-1

said he has heard nothing lately about the park, but sent off a letter to King about a week ago to ask his plans. Although King County owns the land, he said, it has no immediate plans to develop the site.

**BUT THE PARK PLANS** are for the future. The historical society is most interested in the store's past, and is trying to resurrect facts for the Landmarks Commission to consider.

The store was built in the early 1900s — probably 1904, because a local resident remembers that her parents honeymooned in the sleeping rooms upstairs a year later. It was not long after that a dock collapsed on the waterfront, killing 13 people and casting a pallor on the community, then called Stone's Landing. Charles Betts, who built the grocery store, decided it was therefore time to change the name, and chose Redondo, after a California resort.

Although Redondo was isolated by water and winding roads, it was then a stopping-off point for ships, and a place for the well-off to cool off in summer. The community indirectly helped shape greater Federal Way as it is now — roads eventually developed between Redondo and Webb Center (now South 320th Street) and the equally popular Star Lake community, allowing homes to sprout up in what is now central Federal Way.

The store not only offered much-needed supplies to the community, but boasted sleeping rooms upstairs for loggers. In the early days, the entrance

may have been in the back, away from the shore. No bulkhead protected the building then, and some longtime residents recall that customers could row right up to the store at high tide.

**REDONDO QUICKLY** grew up around the store. A bulkhead was added, separating the store

and dogs by name. We lived there year 'round, and not many others did."

**ZIEGLER SOLD** the store to Carl and Margaret Lindstrand in 1941, although he continued to live upstairs several more years, according to Joan Kearns. Carl Lindstrand took the area mail route, and Betty

*No bulkhead protected the building in the early days, and some longtime residents recall that customers could row right up to the store at high tide.*

from the shore and making way for a floating dock and the boathouse, now Salty's. Nelce Christensen built both, although his daughter, Betty May Murphy, said the dock was merely an afterthought.

The store continued to sell butter and dry goods and kerosene, but a new flavor was added when Charley Ziegler bought the place around 1910. He added ice cream to the fare, and sold the treat from big buckets in a shop at the back of the store. Ziegler was also a carnival owner, and he stored his carousel and other carnival equipment in a roundhouse out back, which also served as a dance hall.

Redondo came alive in the summers then, when people moved in from the hot cities. Although men continued to work through the summers, women spent time getting reacquainted and children played in the dirt road that is now the main drag of Redondo, or waded through the chill water of Puget Sound.

"It's funny how you can shut your eyes and see these things, even now," said Betty May Murphy. "We knew all the people in Redondo then, and all the cats

May Murphy acted as postmistress for Redondo.

Some things stayed the same then — ice cream and sodas were still sold out back, and residents still knew each other by name. But Redondo had long ago taken on the air of an amusement park. And the hot spot for summer picnics grabbed even more attention when the Betts family erected a huge amusement hall and dance floor, which in 1936 would become the skating rink. Charles Betts said he wouldn't have built the store at all if he'd thought of the roller rink first, said longtime Redondo resident Helen Sherry.

Weston Betts, Charles' son, built a stucco store next door to the original grocery in 1935, and offered park rides there, including a train ride and a carousel.

In '44, a B-29 airplane dropped from the sky into Redondo waters, right in front of the general store. Sherry recalls that federal agents ripped film from the cameras of onlookers, in the name of national security.

**IT WAS ALL** so much fun, such a booming success, Kearns

recalled, although even as a child she worked hard to fill cellophane bags with dry goods and her sister and mother jerked sodas and scooped ice cream all day.

Then the war ended and Redondo began to change. Families reunited and settled down in housing developments and began to work for a suddenly booming company, Boeing. Entrepreneurs studied the market and built shopping centers and malls for this newly mobile, air-conditioned society.

"There were no church picnics anymore, and there were no school picnics...The kids all have cars now, and they go their own ways. They had the money and gas to get places, and

families didn't have to do things together anymore. And they didn't," said Verone Henson, who summered at Redondo for many years.

Redondo has since huddled firmly to its hillside, its oldest residences sprouting new wings and covered porches and its park sites and open spaces becoming blanketed with new homes. Meanwhile, many of its attractions have slid from sight. The carousel closed up, and Betts' second store was torn down.

The grocery store eventually became a calibrating shop, then a gallery, then a grocery store again. Although Paul Stinson and then Kingen made the restaurant across the street at-

tractive to local residents and tourists, the general store never found its niche again.

The Landmarks Commission may decide the building has enough past flavor to protect. Longtime residents say they know its shabby walls should be saved, at least for the memories.

"It's a unique old building. It doesn't fit in with what Redondo has become, but it's still a part of the history of Redondo," said Kearns.

**This is the latest in a series of stories about local history running in the Federal Way News in honor of the state's centennial. If you have an idea for such a story, please call 839-0700 or 927-4333.**

FREE  
Centennial  
Commemorative

Centennial  
**IRA**  
CELEBRATE  
THE PAST.  
SECURE YOUR  
FUTURE.

During Washington's Centennial celebration, we'll be focusing on the past — celebrating our state's history. But it's also a great time to look into the future, and to retirement needs.

Consider Pioneer Bank's NO-FEE Centennial IRA: Qualified individuals may be eligible for a full tax deduction of up to \$2,000. Those individuals already active in a retirement plan may still qualify for a full or partial deduction.

Either way, of course, the interest in your Pioneer IRA is tax-deferred until retirement. And the best news is there's absolutely NO FEE for setting up, or maintaining your account. We'll even reward your smart decision by giving you a FREE Centennial Commemorative:

- Attractive Green and White Umbrella with Official Centennial Seal\*
- "Centennial" Rhododendron, specially propagated strain selected by the Centennial Commission.

Quantities of both are limited, so don't delay!

The Pioneer NO-FEE IRA. Your chance to celebrate the past, while providing for your future.



That's The Spirit!  
... Of Pioneer Bank.



**PIONEER BANK**  
A FEDERAL SAVINGS BANK

**55 YEARS STRONG**  
FEDERAL WAY 941-0200

\*Umbrella available only for \$2,000 IRA. Some restrictions may apply.

## Correction: Toddler Tryouts held in March

The date for SeaTac Mall's second annual Toddler Tryouts was incorrect in the Friday edition of the Federal Way News.

The correct date should have been March 11.

CAUTION  
DON'T LET THE  
LOW PRICE FOOL YOU

Solid Oak Swivel  
**BAR STOOL**  
Choice of Fabric  
in stock & ready to go!

\$89<sup>99</sup>

30"  
w/brass footstool

BANK CARDS  
WELCOME

DAK FOLKS, INC.

310-B North Washington, Kent  
852-0660

What Do  
Wrenches & Rings  
Have in Common?

Nothing. And that's the fun thing about a Bargain Fair. It's a mix and match of collectables, antiques, arts and crafts, plus brand new items like clothes, shoes, luggage, food, tools and jewelry all at bargain prices. If you like people watching and bargain shopping, come do it all at the Kingdom!



Presented by Swap & Shop Association of the Northwest

Fri. Sat. & Sun, March 10-12

HOURS: Friday 5-9, Saturday 10-9, Sunday 10-5  
ADMISSION: Adults: \$3.00, Seniors (65 & over) & Youths (12-15): \$1.50.  
Kids 11 & under FREE (with adult)

DISCOUNT COUPON

\$1.00 OFF

The Regular \$3.00 Admission when this Coupon is presented at the Box Office. Not Valid with any other discount. Limit One Coupon per Customer. Good March 10-12, 1989 Only.

**Airport operates noise hotline**  
Sea-Tac Airport operates a 24-hour hotline for reporting unusual aircraft-related noise. The number is 433-5393.

No ifs, ands or buts,  
no hassle, no gimmicks,  
no fine print,  
no strings attached,  
no exceptions.

When we say

Satisfaction Guaranteed  
Or Your Money Back,

we mean it!

This has been our way of doing business  
for over a hundred years, and it always will be.

**SEARS**  
Your money's worth  
and a whole lot more.

Guaranteed!

## Eagles' season comes to untimely end



photo by Paul T. Erickson

IT WAS A ROUGH night for Federal Way's Shannon Sehlin, who was knocked to the floor (above) by Port Angeles' Sara Gagnon in the second half of Thursday's state tournament game in the Seattle Arena. Sehlin then was in-

jured on another play (below) with only two seconds remaining and was taken to a hospital for examination. She was not seriously injured and was released to go home soon afterward.

## Champs hit hard times in March

By **CHUCK MINGORI**  
Although the Federal Way girls' basketball team exited the state tournament after losing its first two games, the Eagles did enjoy a memorable year — until the month of March.

"The high water mark for our season was the two games against Puyallup," said Federal Way coach Chuck Czubin, whose team ended the Vikings' five-year reign as league champions with back-to-back wins.

Federal Way beat Puyallup, 47-46, in overtime in the last game of the regular season to force a playoff to decide the South Puget Sound League North Division No. 1 seed into the SPSL Tournament.

Two nights later at Sumner, the Eagles rallied from a 13-point deficit in the first half to win another thriller, 44-43, to set up a battle with Lakes for the league title. The Eagles also won that game, 58-51, to claim their first SPSL championship.

At the West Central District tournament, the Eagles drew a first-round bye and then clinched a berth to the state tournament with a 41-38 victory over Kent-Meridian, avenging a season-ending loss to the Royals from the year before.

But all those victories came in February. Once March rolled around, "It's been down hill ever since," Czubin said.

First the snow postponed a district semifinal game between Federal Way and Kennedy for two days, then the Eagles wound up losing to the Lancers, 45-39, after relinquishing a 13-point lead.

NEXT, DISTRICT officials decided to skip a district game between Port Angeles and Federal Way to determine the third and fifth seeds to the state tournament. Federal Way lost a coin flip and was seeded fifth.

The Eagles then drew a 10 p.m. starting time at the state tournament on Wednesday, the last of the opening round of eight games.

Federal Way players watched the movie, "Hoosiers," Wednesday before their opener against Port Vancouver and the adrenalin was flowing as the Eagles rushed out to a 14-point lead. But the tide changed in the second half as Federal Way went down to an emotionally draining 68-59 defeat.

That put the Eagles into a loser-out consolation game at 10 p.m. against the Port Angeles Roughriders Thursday.

The Roughriders lived up to their nickname as the game turned ugly. A total of 47 fouls were called and Eagle player Shannon Sehlin was injured in the closing seconds as Federal Way saw its season end in a 38-37 defeat.

"I walked away and thought that's got to be the most Mickey Mouse thing I've ever seen," said Czubin. "It just leaves a sour taste in your mouth."

**CZUBIN'S TEAM** not only got roughed up physically, the Eagles also lost the game on

Continued on A-7

## Roughriders rough up Eagles at state tourney

By **GERARDO BOLONG**

No matter how great the season had been, it was still tough to see it conclude.

A splendid year came to an untimely end for the Federal Way girls' basketball team Thursday night as it dropped a 38-37 verdict to Port Angeles in a loser-out consolation game of the girls' AAA state basketball tournament.

In a raggedly and physically played game, Tasha Fraser's three-point goal with 15 seconds remaining provided the final margin, although Federal Way coaches said their videotape revealed the next day that Fraser's foot was standing squarely on the line. Federal Way called timeout with 15 seconds remaining to set up an offensive play.

Federal Way's Shannon Sehlin took a shot as she drove the lane, but missed. A Port Angeles player grabbed the rebound and then drove into Sehlin with two seconds left. Sehlin's face and neck slammed into the Seattle Center Arena floor, but she was called for the foul.

Sehlin was placed in a neck brace and taken by ambulance 20 minutes later to Virginia Mason Hospital.

"Shannon is OK. We got the word on her this morning," said Federal Way coach Chuck Czubin Friday morning, who explained that she was taken to the hospital for x-rays to see if there was a possible fracture.

Commenting on the unusually physical nature of the game, Czubin said, "The officials did nothing. The officials were incompetent. That's the only word I could come up with. I've tried to be a good boy this year about the officials, but that was

so obvious."

**THE GAME** resumed with center Tammy Hughes on the charity stripe for the Roughriders. She missed the front end of a one-and-one situation. The Eagles rebounded and called time out with one second remaining.

Kelly Czubin's desperation heave fell way short and the horn sounded to end the game and Federal Way's season.

Showing the effects of Wednesday night's emotion-draining loss to Fort Vancouver, the Eagle girls muddled their way to leads of 8-3 after one quarter and 19-16 at intermission.

Neither team displayed the enthusiasm it had shown earlier in the tournament and sustained scoring bursts were almost non-existent.

Janelle Oakeley put Federal Way up by five, 23-18, with 5:07 remaining in the third quarter on an outside goal. Four consecutive Port Angeles points shaved the Eagle margin to one.

Junior Brooke Edwards rolled in a short hook shot to make the score Federal Way 25, Port Angeles 22.

**KIRSTEN NELSON** swished a free throw for the Roughriders later in the quarter to knot the score at 25. Two free throws by Kelly Czubin gave Federal Way a 27-25 lead after three quarters. Poor shooting and ball handling continued even while the teams were tied four times during the fourth quarter.

Cyndi Shahan swished two free throws for a 35-33 Eagle lead with one minute left. Tammy Hughes tied the score seconds later with a put-back shot off an offensive rebound.

Sehlin's baseline jumper put Federal Way in front 37-35 at the 1:01 mark. It then remained for Fraser to shoot the Eagles down.

Sehlin led Federal Way with 10 points and five rebounds.

Hughes led Port Angeles with 13 points and eight rebounds.

Port Angeles set an all-time tournament record for lowest winning score. The combined score of 75 points also established the lowest total game score.

**FOR THE GAME**, Federal Way shot 27.8 percent from the field. Port Angeles was an even more unimpressive 24.5 percent.



Although the season ended abruptly, the Eagle girls accomplished much under head coach Chuck Czubin and assistant Ingrid Lyden.

In addition to the state tourney appearance as the West Central District's No. 5 seed, Federal Way won its first ever South Puget Sound League title.

Two consecutive one-point thrillers

over Puyallup produced the North Division championship of the SPSL. Jenny Mahlstedt was named the SPSL's MVP and Chuck Czubin earned co-coach of the Year.

Federal Way came into the state tournament ranked ninth in the state. The Eagles finished the season with a 21-5 record.

## Gator softball team looking for a district berth

The Decatur girls' softball team will be looking for a top-four South Puget Sound League finish and a West Central District playoff berth, after finishing only one game out of the picture last year.

"I think we're going to have a good club," said Decatur head coach Greg Flynn. "We've got some good people back and we've got quite a bit of experience. Overall we should be better than last year. We're expecting good things."

The Gators finished in a tie for fifth last year with Thomas Jef-

erson at 11-9 in SPSL play, one game behind the 12-8 playoff pace of Sumner and Bethel and one half game ahead of Federal Way (10-9).

Even though his team looks better, Flynn is expecting a tight race once again.

"Rogers will be really good, and Federal Way is tough," he said. "They're all tough. Of all the girls sports I think softball is the most competitive from top-to-bottom. It's the old anyone can beat anyone else on any given day kind of thing."

**FLYNN HAS** seven players

back from last spring pencilled into his starting lineup.

A returning starter who will be doing the catching is Shannon O'Dom, while junior Kathy Laky returns as the starting first baseman after hitting .371. Junior Heidi Bertch is a returning junior who is expected to start at second.

Perhaps the strongest position in the lineup is shortstop, where Tanya Fischer returns as a senior after an All-SPSL second team and All-News first team season.

Fischer hit .381 last year with

13 RBI, three home runs and five triples.

"She is an MVP type," said Flynn of Fischer.

The third base position is up in the air at this point, with the contenders including senior Jana Medges, who started as a sophomore but did not play last year, and junior Nicole Adkins of the junior varsity team. Others vying for the job are senior Kim Hyatt and junior Sandy Deresch.

Doing the pitching will be Michelle Aman, who as an All-News outfielder and hit .354 last

spring.

A backup infielder for the Gators is Debra Suzuki, while Tisha Brier is a catcher.

**THE DECATUR** outfield also stands out with two returning starters from last year and one from the year before.

Stephanie Gardner is back as a senior after hitting .320, and Kim Houston returns for her junior season after having a .319 year.

Shelley Richter started for the Gators as a sophomore, and returns for her senior year. Junior Lisa Karn is the other

starter at this point, and juniors Terri Givens and Julie Friedenber are also in the Decatur outfield.

The Gators are scheduled to open their season Wednesday at 3:30 p.m. with a trip to Bethel.

So far the weather has been a problem, however, keeping most of the practices inside the gym.

"Between the field conditions and the weather, it's been brutal," said Flynn. "It would be nice to get the weather a lot better so we can find out some things."

# Federal Way looks ahead to next year

Continued from A-6

what turned out to be a controversial three-pointer by PA's Tasha Frazer with 15 seconds left. A videotape replay revealed that her foot was on the line when she released the ball, Czubin said the next morning.

Czubin pointed to his team's poor shooting as a factor in the loss, although he was outraged at the officials, who he said let the game get out of hand until somebody was hurt. Federal Way made only 11 of 25 free throws for 44 percent and was 13 of 53 from the field for 24.5 percent.

"There's ups and downs in a season," Czubin said. "You just hate to see it end in a downer. You'd much rather win the last game, no matter which one it was, and go onto next season."

But the future looks bright for Federal Way, which returns nine players next year. The Eagles are losing starting center Cyndi Shahan and reserves Heidi Saheli and Fatima Chany to graduation, but return six of their top seven players.

Returnees are SPSL MVP Jenny Mahlstedt, Kelly Czubin, Shannon Sehlin, Janelle Oakeley, Brooke Edwards, Jennifer Evans, Molly McGraw, Tara Boe and Jana Woodworth off a team that finished 21-5 and was ranked ninth in the state going into the state tournament.

"We should be very positive about the future," said Czubin, adding that his team already has its preseason schedule set for next year and the players are looking forward to attending basketball camps in the summer. "They bounce back a lot better than I do."

Czubin praised the support shown by people in the Federal Way community, who trucked

down to Seattle two nights in a row for 10 p.m. games, and said he was happy for the seniors who were able to end their careers with a trip to state.

Czubin also indicated his team will be shooting for a return trip to the Arena next year, but hopefully at different starting time.

"We'll lie, cheat or steal to get an early game," he said.

# SPSL honors Johnson, Schmidt

Steve Johnson of Thomas Jefferson and Jason Schmidt of Federal Way recently were named to the South Puget Sound League's All Opponent boys' basketball team.

Johnson, a 6-8 senior, was second in SPSL scoring this year with 281 points for an 18.7 average. Johnson also was 10th in rebounding with a 7.0 average, third in field-goal shooting (116 of 195 for 59.5 percent) and seventh in free-throw shooting (46-for-60 for 76.7 percent).

Schmidt, a 6-8 senior, was sixth in SPSL scoring with 199 points for a 14.2 average and fourth in the league in rebounding with a 9.4 average. Schmidt also was sixth in the league in field-goal shooting as he made 84 of 148 shots for 56.8 percent.

Ed Miller, a 6-4 senior at Federal Way who averaged 11.2 points per game, was an honorable mention choice.

Brent Williams of Curtis, who led the league in scoring with a 19.8 average and was se-

cond in rebounding with a 10.1 average, was named the SPSL's most valuable player. Don Hustin of Curtis, whose team advanced to the boys' Class AAA state tournament, was named SPSL Coach of the Year.

Also named to the SPSL's All-Opponent first team along with Johnson, Schmidt and Williams were Pete Adams of Sumner and Brian Herting from Puyallup.

The SPSL's All-Opponent se-

cond team consists of Joe Worley (Puyallup), Brian Isakson (Rogers), Alan Allen (Clover Park), Rico Ancheta (Puyallup) and Sylvester Berry (Clover Park).

Joining Miller on the honorable mention list are Dennis Austin (Sumner), Barry Cromer (Clover Park), Eric Lovrak (Curtis), Mike Meek (Rogers), Jeff Perkins (Bethel), Eric Spencer (Rogers), Lance Stretch (Puyallup) and Lango Taylor (Bethel).

# Kennedy cagers bumped

By BILLY STONE

It was a case of bad deja vu for the Kennedy Lancers girls' basketball team last week at the state AAA playoffs in the Seattle Center Arena.

The opponents were different but the results were the same as last year for the Lancers, who won their first game then lost their next two in bowing out of the playoffs without capturing a place.

Senior point guard Jodi McCann summed up the team's frustration: "I thought we were a better team than last year and would go farther. I'm really disappointed. We are a better team than this."

The Lancers opened the tournament Wednesday in convincing fashion with a 66-59 victory over the Garfield Bulldogs. Kennedy led by 10 points at halftime, but Garfield outscored Kennedy by nine in the third quarter to pull within one at the end of three.

The "third-quarter syndrome" caught up with the Lancers in their next two games.

Thursday afternoon against Franklin, Kennedy held a five-point halftime lead, then watched the Quakers pull away as the Lancers scored only one point in the first seven minutes of the third period. Franklin held on for a 50-47 win.

Friday morning against Pasco, the Lancers again led at halftime, 20-15, only to see it evaporate in a 12-2 Pasco third-quarter run.

Kennedy fought back to within two with 3:14 to go in the game, but couldn't get into an offensive rhythm and eventually lost, 51-41.

Kennedy's two losses came in physical games.

Against Franklin, the Lancer front line took a beating from the bigger Quaker front-court players. "They had some big girls who would post up and put their arms out, and Marisa (Bernasek) and I couldn't get around them," forward Christi Plummer said.

Against Pasco, Kennedy coach Paul Muckerheide gave credit to the Bulldog coaching staff.

"They kept rotating their defenses and we couldn't settle down offensively," he said. "Every time we figured out their defense, they changed it. In games at this level you have to catch a break, and we caught none."

# SEARS

## TIRE AND AUTO CENTER

### GREAT LOW PRICES EVERY SINGLE DAY!

**TRUST SEARS TO GIVE YOU MORE!**

**WARRANTIES HONORED NATIONWIDE**  
\* at over 800 locations coast to coast

**TIRE, BATTERY INSTALLATION INCLUDED!**  
Always fast and professional

**STATE OF THE ART DIAGNOSTIC EQUIPMENT**  
The latest diagnostic tools, technology

**OPEN WHEN YOU WANT SERVICE MOST!**

**TIRES, SERVICE AND PARTS FOR MOST VEHICLES**  
Domestic, imports, light trucks

**TRAINED PROFESSIONALS**  
Mechanics have trained in the latest technology

**SATISFACTION GUARANTEED OR YOUR MONEY BACK!**

**SteadyRider**

**PIRELLI**

30,000-mile wearout warranty

Pirelli Response	Every Single Day!
P175 70TR13	\$49.97
P185 70R13	59.97
P185 70R13	62.97
P185 70R14	65.97
P185 70R14	69.97
P205 70R14	73.97
P225 70R15	79.97
P225 70R15	85.97
*P215 65TR15	76.97
*P185 60R14	66.97
*P215 60R14	76.97
*P185 60R15	66.97
*P215 60R15	76.97
*P225 60R15	81.97
*P225 60R15	84.97

\*Blackwall only

**PIRELLI**

Pirelli P6

Pirelli P6	Every Single Day!
185/60HR14	\$84.97
195/60HR14	99.97
195/60HR15	99.97
205/60HR15	109.97
195/60VR15	129.97
205/60VR15	129.97

**ROADHANDLER**

50,000-mile wearout warranty

RoadHandler	Every Single Day!
185/70HR13	\$84.97
185/70HR14	89.97
205/70HR14	94.97
185/60HR14	80.97
195/60HR14	90.97
225/60HR14	94.97
195/60HR15	90.97
205/60HR15	94.97

**GUARDSMAN**

25,000-mile wearout warranty

Guardsman Performance	Every Single Day!
P175 70SR13	\$39.97
P185 70SR13	47.97
P185 70SR14	53.97
P195 70SR14	56.97
P205 70SR14	61.97
P215 65SR15	63.97
P195 60SR14	53.97
P215 60SR14	63.97
P195 60SR15	53.97

**MICHELIN**

50,000-mile wearout warranty

RoadHandler	Every Single Day!
155SR12	\$34.97
145SR13	39.97
155SR13	46.97
165SR13	48.97
175SR14	56.97
185SR14	57.97
165SR15	58.97
165 70SR13	58.97
175 70SR13	61.97
185 70SR13	64.97
185 70SR14	66.97
195 70SR14	67.97
205 70SR14	68.97
205 70SR14	68.97

**MICHELIN**

50,000-mile wearout warranty

RoadHandler	Every Single Day!
P155 80R13	\$39.97
P165 80R13	47.97
P175 80R13	54.97
P185 80R13	57.97
P185 75R14	59.97
P195 75R14	65.97
P205 75R14	67.97
P215 75R15	69.97
P225 75R15	74.97
P235 75R15	74.97

**MICHELIN**

50,000-mile wearout warranty

RoadHandler	Old Price	Every Single Day!
P155 80R13	\$71.99	\$42.97
P165 80R13	79.99	54.97
P175 80R13	89.99	61.97
P185 80R13	97.99	64.97
P195 75R14	109.99	68.97
P195 75R14	105.99	69.97
P205 75R14	112.99	74.97
P205 75R15	114.99	77.97
P215 75R15	118.99	83.97
P225 75R15	122.99	83.97
P235 75R15	123.99	84.97
P185 70R14	104.99	69.97
P205 70R14	112.99	73.97
P215 70R15	116.99	78.97

**GUARDSMAN**

35,000-mile wearout warranty

Guardsman Radial	Every Single Day!
P155 80R13	\$21.97
P165 80R13	32.97
P175 80R13	37.97
P185 75R14	43.97
P195 75R14	45.97
P205 75R14	46.97
P215 75R15	48.97
P225 75R15	49.97

**GUARDSMAN**

40,000-mile wearout warranty

Guardsman Response	Every Single Day!
P155 80R12	\$27.97
P165 80R12	29.97
P175 80R12	31.97
P185 80R12	33.97
P205 70R13	48.97
P185 70R14	48.97
P185 75R14	48.97
P195 75R14	55.97
P205 75R14	57.97
P215 75R14	58.97
P215 75R15	58.97
P225 75R15	58.97
P235 75R15	58.97

**MICHELIN**

40,000-mile wearout warranty

RoadHandler	Old Price	Every Single Day!
LT235 75R15	\$124.99	\$101.97
LT195 75R14	99.99	85.97
LT215 75R15	109.99	96.97
9.50R16.5	154.99	135.97
LT215 85R16	129.99	108.97
LT235 85R16	139.99	123.97
21x10.50R15	124.99	112.97
30x9.50R15	129.99	101.97
8.75R16.5	139.99	119.97
8.00R16.5	124.99	109.97

**MICHELIN**

35,000-mile wearout warranty

TrailHandler A-T	Every Single Day!
LT195 75R14	\$79.97
LT215 75R15	84.97
LT235 75R15	91.97
30x9.50R15	90.97
31x10.50R15	100.97
32x11.50R15	106.97
33x12.50R15	130.97
8.75R16.5	109.97
9.50R16.5	124.97
LT235 85R16	117.97

**BF Goodrich**

THE ALIGNMENT SPECIALISTS

FRONT END	29 <sup>99</sup>
THRUST LINE	39 <sup>99</sup>
TOTAL 4-WHEEL	49 <sup>99</sup>

Every Single Day!

### YOUR MONEY'S WORTH AND A WHOLE LOT MORE!

**HOME OF THE AMERICA'S BEST SELLING REPLACEMENT BATTERIES**

**40 MONTH BATTERY**

• 350 cold cranking amps plus 60 minute reserve capacity for all-weather starts

**29<sup>99</sup>** with trade Every Single Day!

**43024**      **43030**

**NO OUTLET STOCKS, SELLS OR INSTALLS MORE SHOCKS AND STRUTS, NATIONWIDE**

**79<sup>99</sup>** each Every Single Day!

**79<sup>99</sup>** per pair Most cars! Every Single Day!

**93700**      **94400**

**TRIDON WIPER BLADES, REFILLS**

OLD PRICE \$2-97

**2<sup>97</sup>** Every Single Day!

**63711**

**SPECTRUM OIL**

OLD PRICE \$1-29 qt.

**83<sup>99</sup>** Every Single Day!

**70280**

**SENSOR II CHARGER**

OLD PRICE \$89-99

**64<sup>99</sup>** with trade Every Single Day!

**96492**

**PORTABLE CHARGER**

OLD PRICE \$129-99

**99<sup>99</sup>** Every Single Day!

**71820**

**JACK WITH CREEPER SEAT**

Extra special purchase

**44<sup>99</sup>** White Quantities Last

**1266**

**2 TON CAPACITY JACK**

OLD PRICE \$149-99

**119<sup>99</sup>** Every Single Day!

**1240**

**SEARS**      **DIICOVER**      **Gabriel**

Satisfaction guaranteed or your money back

© Sears, Roebuck and Co., 1989

SteadyRider

MICHELIN

PHILIPS LIGHTING

ROADHANDLER

PHILIPS LIGHTING

SteadyRider

**SEARS**  
Your money's worth and a whole lot more.

*The Fresh News About Fish From Safeway*



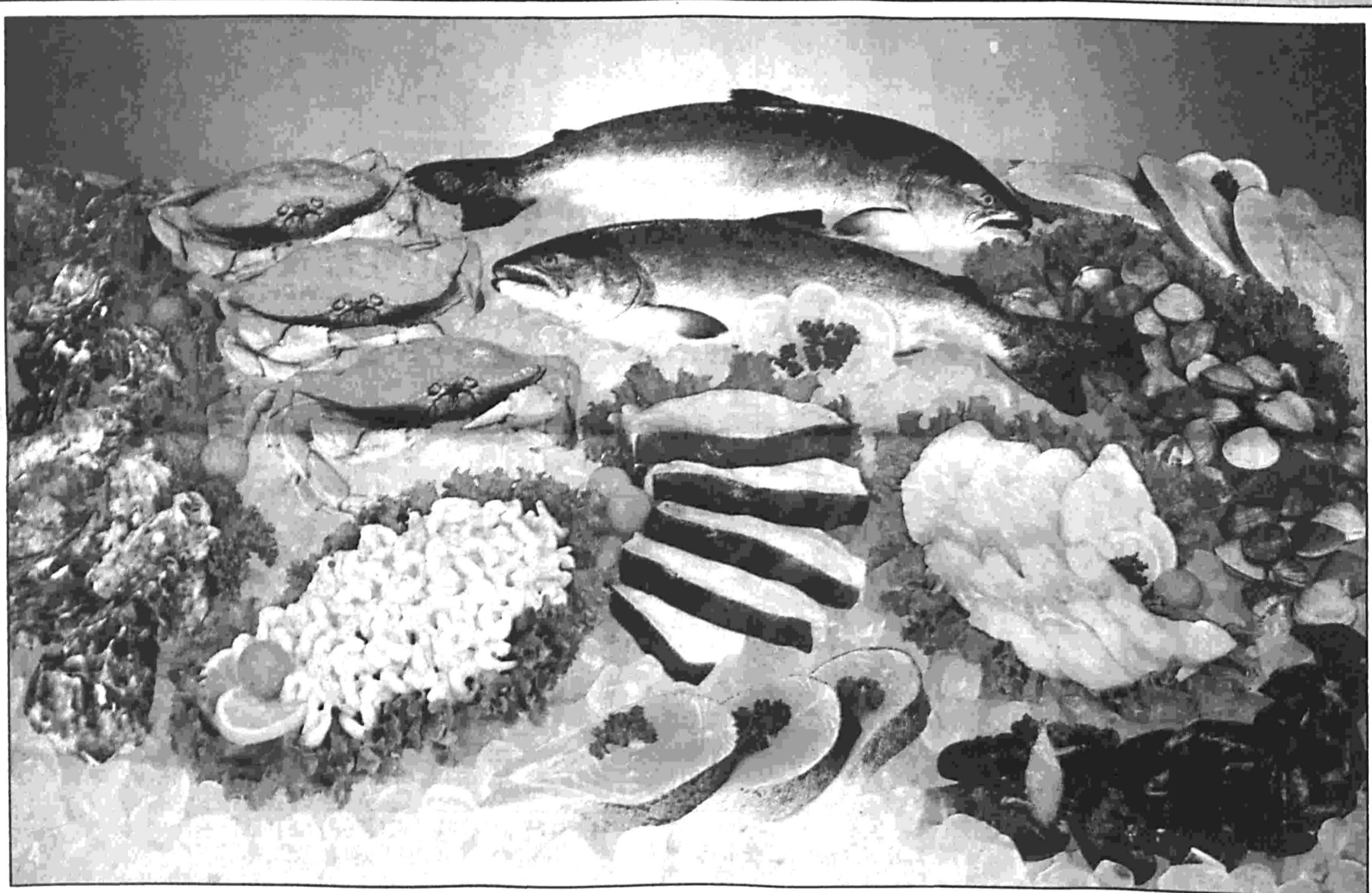
# DAILY CATCH

**FRESH FISH MARKET**

**S**afeway brings you fresh fish from local and distant markets. Our buyers know their fish. And they know who's catching what and where. Which means you get the best of the catch from both coasts, while it's fresh. Favorites such as bay scallops, halibut steaks, coho salmon and Dover sole fillets. All at the lowest prices. After all these years, Safeway keeps to the tradition of the old-time market by providing fresh fish...for the healthy way you eat today!

## FISH FACTS:

- Easy to prepare
- Low in calories
- High in protein
- Easily digested
- A good source of vitamins & minerals



- Fresh King Salmon** lb. **\$3<sup>89</sup>**  
Farm-raised, 2-4 lb. Whole or half only
- Bay Scallops** lb. **\$3<sup>99</sup>**  
Fresh, 80-100 count
- Orange Roughy Fillets** lb. **\$5<sup>99</sup>**  
Mild white fillets
- Cooked Shrimp Meat** lb. **\$4<sup>49</sup>**  
Peeled, ready to eat

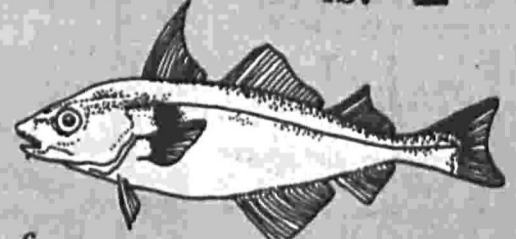
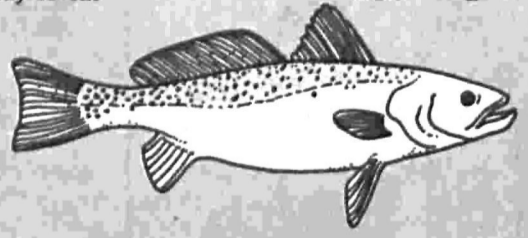
**Broiled Scallop Sauterne**

1 lb. scallops	2 T. sauterne
1 T. lemon juice	2 tsp. parsley, chopped
1 tsp. thyme	lemon wedges
½ tsp. dill weed	

Sprinkle scallops with lemon juice, thyme, dill weed and sauterne in a bowl. Toss lightly. Place on broiler pan. Broil 3-4 minutes. Sprinkle with parsley and serve with lemon wedges. Makes 4 servings.

SEAFOOD: A Collection of Heart-Healthy Recipes  
By Janis Harsila, R.D. & Evie Hansen

- Jumbo Shrimp** lb. **\$17<sup>99</sup>**  
Shell-on, under 7 per lb.
- China White Shrimp** lb. **\$7<sup>99</sup>**  
Shell-on, 26-30 count
- Dungeness Crab Meat** lb. **\$11<sup>99</sup>**  
Cooked meat, ready to eat
- Alaskan Jumbo Cod** lb. **\$2<sup>99</sup>**  
Excellent flavor, mild taste



Prices are effective March 12 - March 21, 1989 at your neighborhood Safeway Stores





**S A World of Selection S**

# IMPORTED BEERS



*Just a sample of our large selection:*

- GUINNESS STOUT
- SAM SMITH TADDY PORTER
- LABATTS BLUE
- LABATTS EXPORT
- LABATTS EXPORT ALE
- LABATTS BLUE LIGHT
- PAULANER OCTOBERFEST
- PAULANER ORIGINAL
- SAN MIGUEL LIGHT
- SAN MIGUEL DARK
- BECK'S LIGHT
- BECK'S DARK
- SHEAF STOUT
- JOHN BULL BRITISH
- TOOTH'S KB LAGER
- DORTMUNDER UNION DARK
- WATNEYS
- JOHN COURAGE
- BASS ALE
- HARP LAGER
- CORONA
- PACIFICO
- SAPPORO DRY MALT LIQUOR
- NEGRA MODELO
- PILSNER URQUELL
- MOLSON CANADIAN
- MOLSON LIGHT
- MOLSON GOLDEN
- HEINEKEN LIGHT
- HEINEKEN AMSTEL LIGHT
- HEINEKEN DARK
- SAMUEL SMITH PALE ALE
- AASS NORWEGIAN
- ST. PAULI GIRL LIGHT
- ST. PAULI GIRL DARK
- NEWCASTLE BROWN ALE
- MACKESON STOUT
- WHITBREAD ALE
- TSINGTAO
- LOWENBRAU SWISS LIGHT
- LOWENBRAU SWISS DARK
- FULL SAIL GOLDEN ALE
- MAC EWAN SCOTCH ALE
- ASAHI SUPER DRY DRAFT
- GLACIER BAY
- MOOSEHEAD
- FOSTER
- KIRIN DRAFT
- DOS EQUIS AMBER
- DOS EQUIS LAGER
- SAPPORO DRAFT BEER
- MORETTI
- PAULANER SALVATOR
- CLARK CANADIAN BEER
- O'KEEFE EXTRA OLD STOCK
- SAM SMITH NUT BROWN
- SAM SMITH OAT STOUT
- SAM SMITH IMPERIAL STOUT
- ST. SIXTUS ALE
- LINDEMANS FRAMBOISE
- AYINGER UR WEIZEN
- CHIMAY RED



**HARP LAGER**  
Brewed in Ireland  
**2 for \$9**  
6/12 oz. bottles



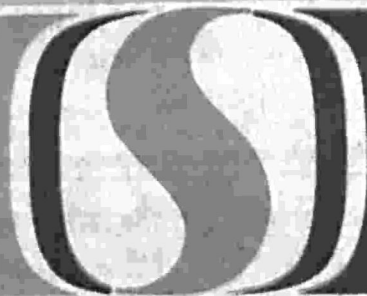
**GUINNESS STOUT**  
Extra  
**2 for \$10**  
6/12 oz. bottles



**GLACIER BAY**  
Classic Lager  
**2 for \$8**  
12/11.5 oz. bottles

Prices are effective Sunday, March 12 through Tuesday, April 4 at your neighborhood Safeway.

Not all beer available in all stores.



**SAFEWAY**

Sales in retail quantities only.

PICTORIAL

# OPEN HOUSE



SUNDAY, MARCH 12th

**3802 S. 348th St.**  
**Open 2-6 pm** Auburn  
 Equestrian delight 2.5 acre estate w/4 bdrm 2.5 bath traditional style nearly 3000 sf home. Tasteful decor; gourmet's kitchen; huge master! \$199,950 Call Stephen Ames 946-4000.  
**ALL AMERICAN HOMES, INC.**

**S. 356 on 1st Ave. S.**  
**Open 11 to Dusk** FW  
 PARKTRAILS 46 estate size lots - just 14 left after 8 months, starting at \$174,950. Classic American, Mallory Construction, Oakridge Homes and Jensen Construction. 839-6650/927-7600.  
**JOHN L. SCOTT, INC.**

**SW 335th & 11th S.**  
**Open 11 to Dusk** FW  
 ENGLISH GARDENS, Newhall Jones Inc. & Parkwood Homes Inc. set the standards in quality. Find out why English Gardens is one of the best selling neighborhoods in Federal Way, 839-6650/927-7600.  
**JOHN L. SCOTT, INC.**

**28251 15th Ave. S.**  
**Open 11:30-5 pm** F.W.  
 Charm continues from the street into a grand entry way. Colonial millwork throughout the custom tile make this home a showpiece. The price is a surprise! \$127,950.  
**ALL AMERICAN HOMES, INC.**

**5216 Broadview N.E.**  
**Open 1-4 pm** Tacoma  
 Sound view! Quiet seclusion! A space for everyone! Quiet rec rm, plus activity room w/built-in book shelves & large woodshop or storage. Multi-level decks and special garden. \$155,000 941-7900 Ext. #226.  
**ALL AMERICAN HOMES, INC.**

**Hoyt Road & SW 330th**  
**Open 12 to Dusk** FW  
 STONE BROOK Newhall Jones Inc. & Nu Dawn present Federal Way's newest community. Large sunny homesites on a hillside offer territory and mountain views. From \$149,950. 839-6650/927-7600.  
**JOHN L. SCOTT, INC.**

**36th Ave. SW & Dash Pt. Rd.**  
**Open 12 to Dusk** FW  
 BAYVIEW COUNTRY ESTATES. Snd. and Mtn. view lots and homes; walking distance to beaches, tennis and golf. Lots \$75,000-\$78,000. Homes \$298,500 and up. 839-6650/927-7600.  
**JOHN L. SCOTT, INC.**

**33305 SW 10th Ct.**  
**Open 1-5** Federal Way  
 This home is a decorator's dream, sunken living room with coved ceilings & kitchen. \$30,000 in upgrades. Professionally landscaped front & back.  
**ALL AMERICAN HOMES, INC.**

**4413 Harbor Ridge Ct.**  
**Open 12-5 pm** Tacoma  
 Sound, Mt. Rainier & city lights view. 4 bdrm "HeatKeeper" home with gourmet kitchen, formal dining rm, large master suite w/walk-in closet & jet tub and upstairs utility room. Ask for Pat.  
**ALL AMERICAN HOMES, INC.**

**29815 20th Ave. S.**  
**Open 12 to 5** Federal Way  
 3 plus bdrms, rec rm and family rm, 2 frplcs. Deck to view sunsets over the Olympics. 18x36 inground pool and hot tub, all cedar fenced. FHA appraised for \$95,000, now \$91,500 Ad #646 839-6650/927-7900.  
**JOHN L. SCOTT, INC.**

**NO CREDIT NECESSARY HOMES AVAILABLE NOW!**  
 CALL FOR INFORMATION ON HOMES IN YOUR AREA \$6000 to \$15,000 GETS YOU IN. MONTHLY PAYMENT \$600 & UP. INVESTORS WELCOME  
**ALL-AMERICAN HOMES**  
 941-7900 EXT. 324

**Windermere Real Estate**  
 33438 - 1st Way So. 838-8900  
**Federal Way**

**LOOKING FOR A HOME?**  
 THERE'S A WIDE SELECTION TO CHOOSE FROM IN THE CLASSIFIED

**SMELL THE SALT AIR?**  
 Listen to the waves breaking on the shore! View the activity of Puget Sound from Tacoma to 3 Tree Point in this Contemporary home. \$259,000 AD #FW582 838-8900.  
**CLASSIFIED 839-9520 TACOMA 927-2424**

## REAL ESTATE NORTHWEST

FEATURING: HOMES, CONDOMINIUMS, COMMERCIAL INVESTMENTS, INDUSTRIAL SITES, RECREATIONAL PROPERTY, WATERFRONT, FARMS & ACREAGE, REAL ESTATE TRADES, BUSINESS OPPORTUNITIES, REAL ESTATE LOANS & MORTGAGES, INSURANCE, COMMERCIAL & RESIDENTIAL BUILDERS

"Quality Street"  
**John L. Scott, Inc.**  
 Real Estate

"QUALITY STREET TRIP TO BARBADOS"

**TWIN LAKES \$98,000**  
 Priced to sell. Seller willing to help with closing costs. Neat mid-entry, completely finished on a large lot in immaculate condition. Refrigerator, W/D included plus 3 discount points. What else can you ask for? Ad #44 839-6650/927-7600.

**NEAT AS A PIN AND TWICE AS NICE!! \$72,000**  
 Cozy and warm with Puget Power energy package. Super rambler on a corner lot, RV parking. Convenient to schools, bank shopping as well as freeway access. Ad #51 839-6650/927-7600.

**WEST SEATTLE \$175,000**  
 Lovely family home in Genesee. Large bedrooms with sitting room and sliders to deck off master bedroom. 2-story with finished basement in choice neighborhood. Call Jeannie Pearce on Ad #232 at 246-0344.

**FIXER UPPER \$66,500**  
 Fixer upper in country atmosphere. Room for expansion on this 3/4+ acre. Must see this 5 bedroom home in Riverton Heights. Hurry, new on market! Call Lisa Jense on Ad #230 at 246-0344 or 244-8670.

**SWEEEPING PUGET SOUND VIEW \$139,000**  
 Spacious building site on choice lot in Three Tree Point area. On water side of the street with easement to the beach. Level access, a perfect place to build your dream home. Call Helen Svenson on Ad #220 at 246-0344.

**LAKOTA VIEW \$119,500**  
 Excellent buy. Shy 2 acres. Preliminary short plat for 2 lots. Treed, slopes to west. View of Sound and island. Call Emilie Stretch on Ad #82 at 246-0344.

**BURIEN \$114,950**  
 Great family home. Large level lot, 3+ bedrooms, 1.75 bath, 2 fireplaces. Big deck, new roof, large laundry room, fenced. Call Lind Stokes on Ad #228 at 246-0344.

**EXECUTIVE WATERFRONT \$149,950**  
 Gorgeous Angle Lake townhouse. Master bedroom suite with view. 3 bedrooms, 3 baths, cathedral ceilings, gourmet kitchen, heat pump, central vac. and more. Call Suki Bazan on Ad #143 at 246-0344.

**REALTY WORLD**  
 South King Realty

**SAWYER'S GROVE \$117,950**  
 3 BR  
 Gorgeous 2 year old Schneider built one-of-a-kind rambler with assumable 9.5% V.A. loan has all the latest amenities and then some. Just an in-nertube roll away from Lake Sawyer Park, get ready for summer fun and call 838-3136 on AD #F112.

**MILTON 3/4 ACRE \$117,950**  
 2 BRDM. Charming 1345 sq. ft. rambler on three quarter acre lot with greenhouse, garden, and loads of fruit trees. This home is a jewel with top quality workmanship and can be purchased minimum down FHA. \$84,950. Call 838-3136 on AD #F87.

**DELUXE TRI PLEX \$115,000** - 9 year old tri plex with assumable FHA loan. Features fireplaces, lanais, covered parking all large units. Located in quiet residential area of Auburn. Owner can offer 10% down terms. Call 838-3136 on AD #F113.

**NEW VA LIST OUT-\$100 DOWN**  
**FHA & VA ACQUIRED** These are GOVERNMENT OWNED 2, 3, & 4 bedroom homes with a price range of \$41,000 to \$90,000. (Condos start at \$35,000.) We keep a current inventory of all available properties with their excellent terms. Stop in for a list of addresses.

**FOREST LAKE CONDO \$25,950**  
 Immaculate one bedroom ground floor unit near Lake Easter in Federal Way. Conventional or owner contract terms available. Call 838-3136 on AD #F29.

**BUILDING SITES**  
 Federal Way \$18,000  
 Milton (2) ea. \$17,500  
 4 Plx-Pacific \$25,000  
 1/4 AC., Milton \$25,000  
 Spring is coming call Realty World at 838-3136.

838-3136  
 33110 PAC. HWY. 50.  
**THE RESULTS PEOPLE**

**Windermere Real Estate**  
 Federal Way 838-8900

**RHODYS & ROSES** Mini-orchard, variety of fruit trees, raised garden area, mountain view, plus, an open spacious home in close-in country atmosphere. \$119,000 AD #FW565 838-8900.

**VIEW!** Lovely Sound and Mtn. view, brick home in super area! 4 bedrooms, hardwood floors, updated gourmet kitchen, fenced yard! Great family home. \$139,000 AD #FW585 838-8900.

**REDONDO CABIN** Cute 2 bedroom, 1 bath cabin, half block from beach with some view of water and year round stream. Double lots, trees and landscaping. \$82,500. AD #FW601 838-8900.

**QUIET LOCATION** Shy 1/2 acre. Custom 3 bedroom, 2 1/2 bath tri-level. Low utility bills! See-through from kitchen to spacious family room with fireplace. RV parking, room for garden. \$89,950. AD #FW607 838-8900.

**EXQUISITE CONDO** Beautiful view from this top and end unit. Vaulted ceilings, brick fireplace. 3 bedroom, 2 baths. \$87,950. AD #FW583 838-8900.

33438 - 1st Way S., Federal Way

**UNDER MARKET RATES**  
**HIGHLAND VILLAGE**  
 By Wm. Sherman & Co.

Model Kathryn \$112,490  
**Quality Built Des Moines**  
 On huge lots from \$110,490

DIRECTIONS: Take Des Moines Exit from I-5 west to Pacific Hwy. South to 240th. West by Highline CC to 16th Ave South. South on 16th Ave to 242nd and follow signs to 242nd and 14th Ave. South. Site 824-8373/office 839-5282. Open daily noon to dusk.

**MacPherson's Inc. REALTORS**

**Stafford Green**  
**NEW HOMES IN "OLD FEDERAL WAY"**  
 From \$125,950  
 See the finished homes now!  
**AVAILABLE FOR IMMEDIATE OCCUPANCY**  
 OR - We will alter any plan to suit your needs  
**DASHPOINT ROAD & 4th AVE SO.**  
 Open Daily 2 to Dusk - Weekends 12 to Dusk  
**CALL BILL HENDRICKS NOW!**  
**ONLY 4 GREENBELT LOTS LEFT!**  
 Office: 839-6650 Site: 941-2425  
 "Quality Street"  
**John L. Scott, Inc.**  
 Real Estate

**HOME LOANS**

	Rate*	APR
1 YEAR ARM	9.25%	12.323%
3/1 ARM First 3 Years Fixed	10.00%	12.206%
30 YEAR FIXED	10.78%	11.129%

FHA-VA Loans also available

**Greg Palmer** 941-9944 Office 991-3199 Pager  
**M.J. Peterson** 941-9944 Office 383-8243 Pager

**PIONEER BANK**  
 A FEDERAL SAVINGS BANK

\*All rates subject to change & calculated on 80% loan to value and fees of 2% or 3% depending on product.

**001 Miscellaneous**

BOTTLED WATER COSTS 79¢ per gal. You Can Have the same from your top for 3¢ per gal. Call the Aqualphile Company 244-8170 for free demonstration.

**CLASSIFIED INDEX**

Miscellaneous	001
Real Estate	100-167
Rentals	202-288
Announcements	302-324
Call An Expert	402-498
Employment	502-542
Merchandise	601-684
Pets/Animals	702-714
Transportation	802-865

**HEAVY DUTY** Deluxe rowing machine, \$249 value; only \$75. Botany 500 ski jackets, \$69.95 value, only \$19.90. Thinsulate bags, \$9.90. Sleeping gloves, \$16.90. Heavy duty rain jackets, \$5.90. 13 function Swiss army knife, \$4.99. Call AAA Liquidating, Des Moines & Normandy Park, 834-3033. Open daily

WANTED Somebody going by air to Salt Lake City to help us send our dog. No cost or work on your part. Please call 838-4583

4 LOTS in the Garden of Good Shepherd, Wash. Memorial Park. After 4 pm, 454-6582

SATELLITE Dish, 10 ft. Price just REDUCED! \$800 or trade for?? 537-6211

**100 199 REAL ESTATE FOR SALE**

102 Open Houses

OPEN 1-4 p.m. HALFWAY TO HEAVEN 4638 Browns Point Blvd. Breathtaking view of Mt. Rainier & Sound from this 3 bdrm., 2 bath home on shy 1/2 acre, walnut trees, formal dining, hardwood floors & 2 frplcs., \$162,000. Cathy Lyne, 874-3200. COLDWELL BANKER

**Rely On Classified.**

**Main Street HOMES**  
 We Build The American Dream  
**Redondo Crest**

Model Inglewood \$106,950  
**AN AMAZING VALUE!**  
 A real "weekend special" 4 bedrooms, 2 1/2 baths, family room, landscaped front yard and easy access to parks, shopping & Redondo Beach  
 Prices from \$94,950  
 OFF 272nd Street  
 27554 - 25th Dr. South  
 Site: 941-5248 Office: 839-5282

**MacPherson's Inc. REALTORS**

**CLASSIFIED**  
 It's your best line to buying and selling!  
 Call 839-9520  
 Classified Advertising Department

# CLASSIFIED

South Zone Edition  
FEDERAL WAY NEWS  
DES MOINES NEWS  
HIGHLINE TIMES  
**839-9520**  
TACOMA 927-2424

CALL BETWEEN 8 A.M. & 8 P.M. MON.-FRI. AND SATURDAY 10 A.M. - 2 P.M.

## Open House

SUNDAY, MARCH 12th

**ALL AMERICAN HOMES**  
12-Dusk  
West Campus 946-4000  
4308 Brown's Pt Blvd  
326X 10th Pl SW  
33628 7th Ave SW  
33129 6th Ave SW  
782 SW 337th St.  
Redondo 941-9000  
18XX Overview Dr NE  
33806 7th Ave SW  
35733 25th Pl So  
30520 6th Pl SW  
5518 Lakeland Hills Wy  
Sea Tac 244-6400  
4302 Browns Pt Blvd  
32627 11th Ave SW  
5411 Lakeland Hills  
WY SE  
17812 2nd SW  
12455 20th Av So  
946-4000  
38025 384th  
33305 SW 10th Ct.  
28251 15th Ave. S.  
4413 Harbor Ridge Ct.  
5216 Broadview NE  
304 S. 165th  
33419 28th Pl. SW

**CENTURY 21 YOUNG HOMES**  
941-3000  
Open 1-4 PM  
Federal Way  
2100 So. 382nd Ct.

**GARY HALL & ASSOCIATES**  
927-8393  
Open 2-5 PM  
Browns Point  
4310 Harbor Ridge Rd.  
NE

**PARKWOOD REALTY**  
874-2000  
Open 1-5 PM  
Edgewood  
4614 110th Ave. Ct. E.

### 110 Homes-Federal Way

BY OWNER: Sunny Tri-level in cul-de-sac. Clean & Ready for new owner! Bright/Twin Lakes area. 3 bdrm. + den, 2 1/2 bath, formal dining, family room, skylite kitchen, frpic., 2 car gar., large backyard ideal for \$37,500. 838-5556 or 874-6192.

**Country Chamer 3 CAR + GARAGE \$92,950**  
Over 1/2 Acre fenced, private w/ lovely landscaped yard complete with park benches. This wonderful rambler is spunky bright & clean! Formal dining, lots of upgrades! Call quick on Ad #24.

**DASHPOINT**  
3 Bdrm., 2 bath, 2 car gar., fenced yard. Only \$73,500. Will go fast! Call Vista Brokers, 226-1800

**ESCAPE FROM THE ORDINARY**  
Contemporary 3 bdrm., 1 1/2 bath home. New carpet, custom tile kitchen with skylight. Cozy rec room features wood stove. Fenced yard & huge covered deck to private hot tub! Assume 10% FHA. By owner \$92,500. Call 838-2144 33322 41st Ave SW.

**BENTON'S REALTY, INC.**  
Federal Way 839-5300  
Open 1-4 PM  
28818 Military Road S.  
Open 11-Dusk  
5002 S. 310th Pl.  
West Cedar Glen  
931-1251  
Open 12-Dusk  
134 6th Ave. S., Pacific  
Browns Point 839-8060  
Open 1-5 PM  
6414 Madrona Dr. NE  
Heather Highlands  
243-8400  
Open 12-Dusk  
16916 SE 329th St.  
32331 174th Pl. SE  
WINDERMERE REAL ESTATE  
838-8900  
Open 1-4 PM  
17435 SE 329th St.  
6748 Soundview Dr. NE  
19419 SE 277th St.  
33240 2nd Pl. SW  
31729-C 48th Lanes SW

**EXTRA Garage, shy acre. 4 Bdrm. 2 1/2 bath, 2 rec. room, Solarium w/hot tub, Sec. of Federal Way. \$109,950. 952-3068**

**FREE ADVERTISING**  
To find out how to advertise your home in this paper every week until sold call Larry Nordberg, 952-8289

**GOOD Home Business**  
Funny Farm House sitting on valuable 1/3 acre-sty. & half. 3 bedrooms, large living room, deck and a huge detached garage out back. All for \$69,500. Call: Century 21 Young Homes Realty, Inc. 941-3000

**GOVERNMENT SALE**  
\$100 down payment program applies on this absolutely beautiful 4 bdrm. 2 1/2 bath home with frpic., rec room, 2 car garage & much more. \$79,900. Ask for Paul Jull. 271-1745 or 226-1358 Visto Brokers

**GREAT BUY! Older home, 5 bdrm., near shopping, schools, \$83,900. 214-436-6078**

**GREAT ASSUMPTION**  
10% VA, hot tub. Call Dorothy, 839-4941. Vanguard Realty

**GREAT BUY!**  
You can own this 1,800 sq. ft. 2 bdrm. starter home on over 3 acres in Federal Way. Only \$96,500. Call Vista Brokers, 226-1800

**HOT! HOT! WON'T LAST!**  
Just listed! Ultra clean & affordable! If you're looking under \$70,000 you'll love this 3 bdrm. Rambler w/ cozy frpic., double gar. w/ work area & much more! A steal at only \$68,500! Act fast on Ad #3339R.

**HOT BUY!**  
99 & 272nd, 2 bdrm., 1 bath, large home, frpic., full bath, 70x150 lot, \$98,000. South End Realty, 941-3060 Smokers Welcome 854-1562

**IDEAL FOR RETIREMENT**  
Just listed! Only \$72,500! Rambler style unit in adult community. Not a condo but the association takes care of your lawn! 1 bdrm., 1 bath, all what's! Including W/D & fridge, oversized attached garage. Walk to Metro & clubhouse. Be first on Ad #340R. Dial 941-9000.

**NEWER home in Redondo area, 3 bdrm., 2 1/2 bath, open kitchen & family room, skylites, oak cabinets & frpic., also fenced yard, peak Sound view, \$114,950. 941-2416**

**NO CREDIT NEEDED**  
\$6000-12,000 moves you in & assume sellers loan. 9 1/2-10.5% Fixed. Call Larry Nordberg, ext. 4097 after 4pm. 952-8289

**NO QUALIFYING**  
Assume 10% loan, unique 3 Bdrm., 2 bath home w/ security system, heat pump & more! Call Annie, 852-8752

**VANGUARD OVER 1/2 ACRE**  
Newer 2400 sq. ft. home. 3 bdrm., 2.5 baths, 2 rec. rooms, 3 frpics., hot tub, solarium, huge deck. Only \$96,950. Call now! Jack at 941-7900 ext. 247.

**OWNER Transfer...**  
Your Gift!  
Beautiful daylight rambler-view of lake-Twin Lakes cul-de-sac. Appraised \$124,500. 1 1/2 bdrms. \$122,500. Call Century 21 Young Homes Realty, Inc. 941-3000 for your appt.

**POSSIBILITIES**  
Shy 5 acres backs to park trails. Has older 2 story remodeled home and lots of possibilities to do more-3 bedrooms for \$125,000. Century 21 Young Homes Realty, Inc. 941-3000

**BY Owner, no qualifying, \$10,000 assumes balance of 68,000 FHA 11 1/2%. Very nice 3 bdrm. 874-0208 days & 839-3076 eves.**

### 110 Homes-Federal Way

**PROFESSIONAL W/ ESTABLISHED BUSINESS**  
Seeking reasonable lease purchase option. (or co. ownership arrangement) with owner or builder in W. Campus area. Call 874-0320, A.D.

**ROOM MAINTENANCE**  
Large w/d mid entry home on quiet street near Solwater State park. Big rec. room holds both pool & ping-pong table-2 frpics.-cheerful kitchen overlooking fenced yard, new carpet "upstairs utility room". \$85,500. Ad #99.

**SWEEPING VIEW**  
3450 sq. ft. of custom elegance! Owner transferred & must sell this gorgeous 4 bdrm. 3 bath home. Oak floors & cabinets, 2 view decks, beautiful yard, built in back & security systems & too much more. Offered at \$260,000. Don't miss the boats. See AD 308R. Dial 941-9000

**UNIQUE-PRIVATE**  
Mini Estate for the gentleman rancher. Situated on over an acre of fenced grounds this 5 yr. old custom home. Features: frpic. & soaking tub in master suite, wet bar, double garage & much more for only \$154,950. Be first to see AD 321R. Dial 941-9000

**WINTERWOOD SHY ACRE \$129,950**  
That's right! Priced for a quick sale. 4 bdrm., 3 1/2 baths. Spacious, heated glass, energy efficient heat pump w/ wood stove. Dream Home! Ad #27. 839-5282, 927-7733. MacPherson's Inc., Realtors

**WOODRIDGE Rambler**  
End of cul-de-sac, lots of trees, 3 bedrooms, 2 bath, huge family room, kitchen w/bar, plus formal dining room and 2 car garage, for only \$78,500. Call Century 21 Young Homes Realty, Inc. 941-3000

**DES MOINES view condo, 2 bdrm., 1 bath, \$59,500. 878-3033 or 243-1243**

**DES MOINES Townhouse**  
style condo. Good security, \$67,500. Willing to negotiate. Call 824-1168 Principals only.

**N. BURIEN, 1 bdrm., frpic. W/D, storage, ground floor. \$47,000. 228-7409**

**2,000 SQ. FT. 9 year, well-kept home. Large yard, close to everything, 2 car garage. \$85,000. 838-5219**

**2100 Sq. Ft. Tri-Level, just reduced to \$85,500. Landscaped, fenced & ready to occupy. #728. Flannigan Ewing Realty 838-6955**

**\$75,000. 4 bdrm., 1-3/4 bath, walking distance to Sea-Tac Mall, schools, library. 941-7144**

**BETTER THAN NEW**  
Asking \$134,950. This gorgeous features 3+ beds, 3 baths, family room open through kitchen, 4 bright skylights, approx. \$20,000 worth of solarium & hot tub. Ad #187R is beautiful! Dial 941-9000 today.

**DUPLEX For Sale. 2 bdrm, frpic., new appls. In excellent condition. \$79,500. 839-8071**

**DUPLEX In quiet Milton on 1/2 acre lot. 2 bdrm units, excellent investment \$64,500. Ask for Judd, 839-53300**

**FHA appraised, Burien. Call Dorothy, 839-4941. Vanguard Realty**

**FOR THE Discriminating buyer**  
this huge park-like setting mobile w/2 bdrms., large living area w/ woodstove, storage building & separate dog run. Only \$33,750

**OUTSTANDING VALUE**  
this 3 bdrm., 2 bath mobile home, padstone for heating efficiency, Large garage 20x36. Workshop 12x16. Only \$41,000

**PRICE REDUCED for quick sale, 1985 model with 2x6 construction, sheetrock walls. This home has many up-graded features, \$45,000**

**FORCED TO SELL! Burien 60X12 mobile w/expansive frpic, deck, storage, 2 bdrm, kid's ok. Low down assume loan. 821-8137**

**MARY LOU'S SMALL WONDERS**  
For a payment of \$198/mo + reasonable park space & partial util., you can own one of these lovely mobile homes. They're pretty, clean & very affordable! Give United Mobile a call! 852-8600

**1974 SAHARA 68x14, 3 bdrm., carpets, appls., 3 enclosed sun porch, wheelchair ramp, electric heat, W/D Hookup, \$12,000. 767-5923**

**3 ROOM Mobile Home w/ tipout. Make an Offer. 838-9702**

**SPECTACULAR view lot, overlooking whole area & mountains, on paved road. Community park & more, \$14,500**

**LAKE TAPPS REALTY Pacific Land Associates 863-4406 838-9393**

**FORCED TO SELL! Burien 60X12 mobile w/expansive frpic, deck, storage, 2 bdrm, kid's ok. Low down assume loan. 821-8137**

**120 X 120, level building site, near 5 Mile Lake. Exc. neighborhood. \$22,000. 783. Flannigan Ewing Realty. 838-6955 or 927-2446**

**DRAGER Land & Homes, Inc.**

### 114 Homes-General

**ODOWN**  
VA/HUD homes. For more info call Dorothy, 839-4941 or 941-7770

**VANGUARD AD SPECIAL**  
Homes For Sale  
Private Party Ads Only PREPAID ADS ONLY 4 WEEKS FOR THE PRICE OF 3 WEEKS

**Ask for the 4 or 3 special. Prepay your ad by check, cash or Mastercard-Visa. If you sell the home early, call me to adjust the bill for the number of issues the ad actually runs. If you paid by cash or check, a refund will be mailed to you. Mastercard and Visa are not billed until the ad expires or is cancelled. The 4th week is free. Call Today 839-9520 927-2424**

**118 Waterfront**  
DO YOU need a beautiful waterfront home that offers privacy & seclusion? Over 5,000 sq. ft. of quality living space, 3 plus bdrms., 3 1/2 bath. Over 500 ft. of prime western exposure waterfront on Lake Tapps. For more information call LAKE TAPPS REALTY Pacific Land Associates 863-4406 838-9393

**CHOICE Level 3/4 acre partially cleared w/large evergreens. Close in, easy commute, \$25,000**

**LAKE TAPPS REALTY Pacific Land Associates 863-4406 838-9393**

**5 ACRES, So. Widgey, 3 mi. from ferry landing. \$25,000. 244-1458**

**Selling Property? SELL IT WITH STATE-WIDE CLASSIFIEDS**

**114 COMMUNITY NEWSPAPERS**  
In Washington 912,953 HOMES

**25 WORDS ONLY \$129 (\$4 each additional word) Ads must be prepaid. Visa & Mastercard accepted. Ads will appear in the next available issues of the 114 newspapers. Call Classified 839-9520 927-2424**

**157 Commercial Property**  
COMMERCIAL INVESTMENT. Approx. 3200 sq-ft. building on unobstructed sound view lot. Fully leased. Could convert to restaurant, medical offices, etc. \$399,000. AD#FW543. 838-8900

**1 BDRM Apt. Adult only. \$295. 244-5073**

**2 BDRM, very clean, N. Burien, on busline close to shopping. \$395-400. 241-1969**

**2 BDRM, \$385 + \$200 dep. 11446 1st Ave So. 248-0891**

**2 BDRM, tri-plex, fenced yard, W/D, no pets, \$450/mo. + dep. 243-0119**

**2 BDRM, 1 1/2 bath & 1 bdrm. avail., on busline, near airport, close to downtown. Security dep. \$99. 246-3319**

**1 BDRM Apt. Adult only. \$295. 244-5073**

**2 BDRM, very clean, N. Burien, on busline close to shopping. \$395-400. 241-1969**

**2 BDRM, \$385 + \$200 dep. 11446 1st Ave So. 248-0891**

**2 BDRM, tri-plex, fenced yard, W/D, no pets, \$450/mo. + dep. 243-0119**

**2 BDRM, 1 1/2 bath & 1 bdrm. avail., on busline, near airport, close to downtown. Security dep. \$99. 246-3319**

**1 BDRM Apt. Adult only. \$295. 244-5073**

**2 BDRM, very clean, N. Burien, on busline close to shopping. \$395-400. 241-1969**

**2 BDRM, \$385 + \$200 dep. 11446 1st Ave So. 248-0891**

**2 BDRM, tri-plex, fenced yard, W/D, no pets, \$450/mo. + dep. 243-0119**

**2 BDRM, 1 1/2 bath & 1 bdrm. avail., on busline, near airport, close to downtown. Security dep. \$99. 246-3319**

**1 BDRM Apt. Adult only. \$295. 244-5073**

**2 BDRM, very clean, N. Burien, on busline close to shopping. \$395-400. 241-1969**

**2 BDRM, \$385 + \$200 dep. 11446 1st Ave So. 248-0891**

### 167 R.E. Contracts

## CASH NOW

We buy 1st and 2nd Real Estate contracts and mortgages  
Business and Commercial Loans  
**PACIFIC COAST INVESTMENT CO.**  
TACOMA 872-6824  
SEATTLE 624-3440  
Bob, Jr. Eves/Wkends 286-9431

### 155 Lots, Acreage

**READY TO GO, shy 1/2 acre with well with pump, new septic, leveled & clean, \$21,500**

**TAPPS ISLAND** best lot on the island at this price, high & dry level above street grade with nice evergreens, close to clubhouse, \$29,500

**LOTS TO CHOOSE FROM,** just tell us the area & price, we will find it for you, 1/4 acre to 3/4 acre, \$13,500 to \$20,000

**TREES, trees, trees, 80x182 lot in area of quality homes. Near lake & park, only \$15,500**

**QUIET 1-1/4 acre with valley & South Hill view, just 1 mile from Sumner. Owner terms \$32,500**

**CHOICE Level 3/4 acre partially cleared w/large evergreens. Close in, easy commute, \$25,000**

**LAKE TAPPS REALTY Pacific Land Associates 863-4406 838-9393**

**5 ACRES, So. Widgey, 3 mi. from ferry landing. \$25,000. 244-1458**

**Selling Property? SELL IT WITH STATE-WIDE CLASSIFIEDS**

**114 COMMUNITY NEWSPAPERS**  
In Washington 912,953 HOMES

**25 WORDS ONLY \$129 (\$4 each additional word) Ads must be prepaid. Visa & Mastercard accepted. Ads will appear in the next available issues of the 114 newspapers. Call Classified 839-9520 927-2424**

**157 Commercial Property**  
COMMERCIAL INVESTMENT. Approx. 3200 sq-ft. building on unobstructed sound view lot. Fully leased. Could convert to restaurant, medical offices, etc. \$399,000. AD#FW543. 838-8900

**1 BDRM Apt. Adult only. \$295. 244-5073**

**2 BDRM, very clean, N. Burien, on busline close to shopping. \$395-400. 241-1969**

**2 BDRM, \$385 + \$200 dep. 11446 1st Ave So. 248-0891**

**2 BDRM, tri-plex, fenced yard, W/D, no pets, \$450/mo. + dep. 243-0119**

**2 BDRM, 1 1/2 bath & 1 bdrm. avail., on busline, near airport, close to downtown. Security dep. \$99. 246-3319**

**1 BDRM Apt. Adult only. \$295. 244-5073**

**2 BDRM, very clean, N. Burien, on busline close to shopping. \$395-400. 241-1969**

**2 BDRM, \$385 + \$200 dep. 11446 1st Ave So. 248-0891**

**2 BDRM, tri-plex, fenced yard, W/D, no pets, \$450/mo. + dep. 243-0119**

**2 BDRM, 1 1/2 bath & 1 bdrm. avail., on busline, near airport, close to downtown. Security dep. \$99. 246-3319**

**1 BDRM Apt. Adult only. \$295. 244-5073**

**2 BDRM, very clean, N. Burien, on busline close to shopping. \$395-400. 241-1969**

**2 BDRM, \$385 + \$200 dep. 11446 1st Ave So. 248-0891**

**2 BDRM, tri-plex, fenced yard, W/D, no pets, \$450/mo. + dep. 243-0119**

**2 BDRM, 1 1/2 bath & 1 bdrm. avail., on busline, near airport, close to downtown. Security dep. \$99. 246-3319**

**1 BDRM Apt. Adult only. \$295. 244-5073**

### 215 Apts. Federal Way

## WOODSY SETTING MIRROR WOODS MANOR

4-Plex Design  
1, 2 & 3 bdrm. units.  
Amenities include:  
• Wood burning fireplaces  
• Washer/dryer in unit  
• Private patio  
• Spacious storage  
• Covered parking  
• Close to shopping

**941-6048 31700 3rd. Pl. S.W.**

**Mirror Woods MANOR**  
Pacific Bellevue Development

**212 Apts.-Des Moines Midway**  
SPACIOUS 2 bdrm, convenient to college, shopping & business. \$380/mo. 244-1261 746-0847

**THE TERRACE**  
Spacious 1 & 2 bdrm. Some view. 22620 28th Ave SW. 878-6980

**2 BDRM, energy efficient, \$450, \$200 dep. 824-0411**

**213 Apts.-McMicken Riverton, Sea-Tac**  
BOULEVARD Park 1 bdrm, plus shops, adults, no pets. \$300. 852-3163

**CLEAN 1 bdrm. Ground floor, \$325+tr. 874-3033 or 243-4044**

**NORMANDY COURT APARTMENTS**  
2 bdrm, close to Boeing & bus. Security gates & pool. 242-9655

**SMALL 1 bdrm, clean & quiet, North of Airport, \$325. 242-5030**

**1, 1 1/2 & 2 BDRMS. Quiet, Security bldg, Pool, close to schools & Boeing. From \$350. 246-4034**

**1 BDRM, \$320-350, w/w, pool, cabana. 246-3324**

**2 BDRM, 2 bath, 1220 sq. ft. View, huge deck, carport, \$490. 11600 Military, 838-0742**

**215 Apts. Federal Way**  
AFFORDABLE 2 bdrm. in quiet family complex. Close to everything you need, drive by Southwindy, 1821 S. 310th St. or Call 941-3699

**ARROWWOOD Apts., large 2 bdrm, frpic., dishwasher, free cable. Call 838-6479**

**BE SECURE In a 1 or 2 bdrm. apt., W/D, frpic. & individual monitored alarm. \$100 Move-in Special. 941-2809**

**CHELSEA COURT**  
1 & 2 bdrms. condos. Frpic, appls, W/D hookup, covered parking, pool & sauna. 927-2926. Leave message

**CLEAN 2 bdrm., carport w/storage. \$370+tr. 874-3033 or 243-4044**

**DESIGNER CONDO, lots of wallpaper, wood & brick, 2 bdrm., 1 1/2 bath, W/D, patio on pool. View Sound. 1-4pm, 2532 So. 317th # 107. \$495. 226-8147**

**FEDERAL WAY 2 bdrm condo, single level, frpic, W/D, pool, more. On busline, by mail, \$500 838-1080**

**HIPPITY HOP HOP</**

256 Houses-General

EXECUTIVE HOME 4 Bdrm., 1 3/4 bath, double gar., frpl., sound view, \$1150 mo. Bell Anderson Realty Call Vicky or Beth 852-8195 or 432-6046

GARAGE, 3 bdrm., \$375. 3-18. Fee New Way Homes 859-8691, 927-0660

2 BDRM., carpets, \$260. P-2-377. Fee New Way Homes 859-8691, 927-0660

A work for rent & utils., 2 bdrm, 2 acres, P3-90. Fee New Way Homes 859-8691, 927-0660

3 BDRM., gar., \$475, 3-72. Fee New Way Homes 859-8691, 927-0660

3.5 ACRES, 2 bdr., \$400. 3-45. Fee New Way Homes 859-8691, 927-0660

5 BDRM, kids/pets OK 2-14. Fee New Way Homes 859-8691, 927-0660

WATERFRONT Hideaway! Home on Lake Washington. Frty. boat moorage. Lease \$1250. + dep. Avail. 3/1. Call V. Potter, 838-8900, 838-4666 eves.

276 Mobile Home Lots FAMILY & Adult, now offering space for 14 & double mobile homes, in-cl. water, garbage, sewer, & 12 channel cable TV.

281 Office Space 1-4 PERSON Executive office suites from \$295. Omni Executive Center, 946-5101.

BURIEN Attractive Professional/Retail space on 152nd S.W. Currently plumbed for beauty shop.

FEDERAL Way. Central Location, attractive, reasonable, quiet, good parking. Flexible terms for small business. 839-2927.

OFFICE includes util. & receptionist to answer your phone. Exc. freeway access. From \$155. 838-2355

SMALL Office, all utils., \$250. 839-4003

TIME Share furnished office, 11x14 new bldg, major services. 320th & 1st Ave S. Federal Way. Avail 8-5. Mon-Fri. 822-5038-9074

283 Storage Space BOAT'S, RV's, etc. Inside & Out. 24 hr access. N. Auburn, reasonable rate. 838-3711

285 Hall Rentals HALL SUITABLE for Wedding Receptions, dances & anniversaries. Near Tukwila. 935-3844

LARGE NEW HALL with kitchen facilities, avail. for Christmas parties, wedding receptions, anniversaries, dances. Des Moines area. 824-8770

NEAR SEA-TAC AIRPORT: MCMICKEN Heights Improvement Club avail. days or eves. for dances, anniversaries, receptions, meeting rooms. Kitchen facilities avail. 3730 S. 166th St. Sea-Tac. 242-6080 or 243-3111.

300 399 Announcements

302 Lost LOST: Female, Black & white Springer Spaniel, twin Licks, Federal Way area. Child's pet. Reward \$5 927-2074

304 Found (Free) FOUND Male medium size white dog, West Highland White Terrier, Federal Way area. Reward \$5 859-0644 or 852-0120

FOUND: Young male Dalmation? in Highline area. White, with large black patches. Many small dots. Looking for owner or adoption. 246-3222

307 Notices AGREEMENTS & CORRECTIONS Ads must run one time before changes and cancellations may be made. Copy changes will be treated as new copy placement.

CLASSIFIED Is Open 8 A.M. to 5 P.M. Monday thru Friday 10 A.M. to 2 P.M. Saturdays

DEADLINES For Robinson Papers Monday by 5 p.m. for Wednesday's paper. Wednesday by 5 p.m. for Friday's paper.

Abbreviations are limited to those on our approved list which is available on request.

313 Personals

CAN'T Afford Fancy Diet Systems or Other Weight Loss Programs? Try the EASIEST Diet Plan!

★ "Cookies & Cream" ★ By Phoenix, Inc. Call Al & Jill at 839-4023 "Come fly with the Phoenix!"

★ Free Home Delivery ★ NOTICE 976 PREFIXES Ads with 976 telephone prefixes require the payment of a fee which will usually be billed by your phone service provider for each call.

★ Tired of the Bar Scene? CALL 1-976-3105. \$3 YOU can breathe, eat, Call Peggy Morgan Hypnotherapist 824-7221.

322 Work At Home Opportunities EARN excellent money at home. Assembly work, jewelry, toys, & others. Call 1-619-565-1522 Ext-KA3160, 24 hrs.

EASY WORK! Exc. Pay! Assemble products at home. Call 504-649-0670 Ext. 5492

I need Help! PT/FT, your home office, \$500/1500/wk. Pam 562-6299

STAY HOME MAKE \$325 WEEKLY Helping local business with overflow clerical work. Part-time. No exp. GET PAID DAILY. Send long self-addressed stamped envelope: Allied 442-823, 4521 Campus, Irvine, CA 92715

\$10-\$360 WEEKLY AND MORE Mailing commission circulars! Mail self-addressed stamped envelope: Income Systems Ltd., Dept. C, 7721 Marvin Rd. N.E., Olympia 98506

"THIS Newspaper suggests that you carefully review information received from these ads before taking action."

400 499 CALL AN EXPERT

404 Building, Remodeling, Repair REMODELING AT ITS BEST FOR LESS

ASK ABOUT \$0.50 PLAN & DO HALF, YOU DO HALF YOU SAVE

Free Planning & Estimates QUALITY NORTHWEST CONSTRUCTION CALL ANYTIME

839-1804 or 839-1804 No. QU-AL-IN-C1971A Complete building remodeling. Specializing in carpentry of all kinds. Free est. Mooney Construction. 762-5872. KEITHMC1795C

COMPLETE BUILDING/REMODELING Design & Construction Call 874-4008

HERR CONSTRUCTION INC. HERRC2028N

GOING TO REMODEL? Large or small Our specialties are windows doors skylights bathrooms decks kitchens above roof chimney work Ybarra Construction, YBARRC137N1 246-4111

ABM SERVICES Kitchens, Baths service, Decks Custom woodwork ADDITIONS & REMODELING

LARGE & SMALL Free estimates AMBSE\*132KN 878-1458 947-7892

CASTLE CONSTRUCTION Remodels, Repairs New Construction Reasonable Rates Quality Work. Free Est. CASTLC136CD 735-2089

CUSTOM residential design & construction, new or remodel. WILLINM141ND, 922-0593

D & T CONSTRUCTION Your complete remodeling service, garages, decks, additions & kitchens, skylights, garden windows, specializing in water damage & bathrooms. Free est. Call 248-0511

DTCON\*\*166P5 DECKS, Fences, Remodeling, Repairs, Concrete work, additions. Free est. BERGEC\*121PF, 838-5501

CLASSIFIED Is Open 8 A.M. to 5 P.M. Monday thru Friday 10 A.M. to 2 P.M. Saturdays

DEADLINES For Robinson Papers Monday by 5 p.m. for Wednesday's paper. Wednesday by 5 p.m. for Friday's paper.

204 Building, Remodeling, Repair JORDAN'S WESTERN WOODCRAFT (you should see what we saw) new constr. I stop does it all. Kitch. en remodeling our specialty. Lic# JO-RD-AR-834506 243-7512

LET'S WORK TOGETHER On your remodel/additions, design thru construction. General/Cathy, 244-6682 eves. GENVEG12505

NEED HELP Building design-finance Additions-Remodels-Homes 824-5076 DMOLSCC12005

NEW & REMODEL-ALL phases. Pest damage & dry rot repair. 30 yrs. exp. 242-5613. PRITCC271J2

CUSTOM DECKS DOCKS-FLOATS PATIOS Additions, fences. Design thru construction. Complete construction services. References 878-2768

404 Building, Remodeling, Repair

JORDAN'S WESTERN WOODCRAFT (you should see what we saw) new constr. I stop does it all. Kitch. en remodeling our specialty. Lic# JO-RD-AR-834506 243-7512

LET'S WORK TOGETHER On your remodel/additions, design thru construction. General/Cathy, 244-6682 eves. GENVEG12505

NEED HELP Building design-finance Additions-Remodels-Homes 824-5076 DMOLSCC12005

NEW & REMODEL-ALL phases. Pest damage & dry rot repair. 30 yrs. exp. 242-5613. PRITCC271J2

CUSTOM DECKS DOCKS-FLOATS PATIOS Additions, fences. Design thru construction. Complete construction services. References 878-2768

REMODEL RENOVATION Plumbing, drywall, plaster COLSOS143M5 932-9320

406 Carpentry CLEAN Windows in your home. 9 yrs. exp. Refs. Jeff's Windows, 839-1280

KLEER-VUE Window Clean Professional-Affordable Free Est. 241-6630

444 Handy Person NO JOB Too small. Home maintenance/painting. Call Doug, 878-2666

HOME Repair/painting. We do everything. 30 Yrs. Exp. 941-5241 Free ests.

IFIX 4 U Exp. Bathroom Specialist. Tub, shower walls. Faucets! Free est. Call Gena 839-2615 HONESH\*141KN

448 Cleaning DUSTBUSTERS Exc. house-cleaning at an affordable price! 824-0706

\*KREIN'S HOME CARE \* Complete housecleaning. One time or regular service by professionals. Rugs, upholstery Steam Cleaned. No calls on Sat. We furnish equipment. 839-8899

THE SCRUB BUDS for a "Crisp Clean" home. Linda 941-1985

CHRISTIAN Housecleaning. 5 yrs exp., Lic., 2 openings, reasonable rates. Call 241-5285

HOUSECLEANING w/o special touch. 939-5567

IRONING. Pick up available. 246-1658

LOOK No farther. For dependable & affordable house or office cleaning. Call 946-2927

TAYLOR MAID HOME CLEANING We don't cut corners... We Clean Them! Bonded & Guaranteed FREE ESTIMATES 763-3655

DO YOU Need a Clean House? Will do light cleaning. 36hr. 824-5923

HOUSE/APT. cleaning, 8 yrs. exp. Exc. refs. Reliable worker. Free est. 932-6663

450 Asphalt Boulevard Asphalt Paving Driveways, parking areas, seal coating, repairs. 20 yrs. exp. Free Est. 242-6317 BOULLEV 151KP

PUGET SOUND ASPHALT Driveways, repairs, parking lots. Free ests. 246-6629. PUGETSAS18LN

KINGCO ASPHALT Serving South King County. Driveways, repairs, seal coating, parking lots. Free ests. KINGCAP-23455 874-9397

SOUTH END ASPHALT Driveways-Parking areas. Patching-Grading. 244-7544

L.A. KEYES, Patios, driveways, steps, aggregate. Estimates 878-4717 KEYESLA332PC

CONCRETE PATIOS, Driveways, Aggregate walls. Free est. BERGEC\*121PF, 838-5501

DRIVEWAYS/PATIOS Financing available. PANTHC\*122Q3 946-3552

FOUNDATIONS, driveways, sidewalks, new garages. BTCUSB15105. 922-5012, 841-2819

JVM CONCRETE: Free est. 874-6205

454 Roofs, Gutters YBARRA ROOFING ALL TYPES OF ROOFING RESIDENT/COMMERCIAL FREE ESTIMATES 223-02-YB-AR-RI-22RH CALL 941-1118

422 Cabinets

GLAZIER CALL 248-1114

Custom European Wall Systems Book Cases

Hardwood Entertainment Centers Shelving

Closet Organizers Office & Computer Work Stations

Serving Bellevue & So. King County 248-2398

430 Ceilings CEILING Repropts, texture. PETERSD22687 839-3002

SPRAYED Acoustic ceilings & wall texture. Keenan Acoustics 631-4414, 931-1327.

432 Windows CLEAN Windows in your home. 9 yrs. exp. Refs. Jeff's Windows, 839-1280

KLEER-VUE Window Clean Professional-Affordable Free Est. 241-6630

444 Handy Person NO JOB Too small. Home maintenance/painting. Call Doug, 878-2666

HOME Repair/painting. We do everything. 30 Yrs. Exp. 941-5241 Free ests.

IFIX 4 U Exp. Bathroom Specialist. Tub, shower walls. Faucets! Free est. Call Gena 839-2615 HONESH\*141KN

448 Cleaning DUSTBUSTERS Exc. house-cleaning at an affordable price! 824-0706

\*KREIN'S HOME CARE \* Complete housecleaning. One time or regular service by professionals. Rugs, upholstery Steam Cleaned. No calls on Sat. We furnish equipment. 839-8899

THE SCRUB BUDS for a "Crisp Clean" home. Linda 941-1985

CHRISTIAN Housecleaning. 5 yrs exp., Lic., 2 openings, reasonable rates. Call 241-5285

HOUSECLEANING w/o special touch. 939-5567

IRONING. Pick up available. 246-1658

LOOK No farther. For dependable & affordable house or office cleaning. Call 946-2927

TAYLOR MAID HOME CLEANING We don't cut corners... We Clean Them! Bonded & Guaranteed FREE ESTIMATES 763-3655

DO YOU Need a Clean House? Will do light cleaning. 36hr. 824-5923

HOUSE/APT. cleaning, 8 yrs. exp. Exc. refs. Reliable worker. Free est. 932-6663

450 Asphalt Boulevard Asphalt Paving Driveways, parking areas, seal coating, repairs. 20 yrs. exp. Free Est. 242-6317 BOULLEV 151KP

PUGET SOUND ASPHALT Driveways, repairs, parking lots. Free ests. 246-6629. PUGETSAS18LN

KINGCO ASPHALT Serving South King County. Driveways, repairs, seal coating, parking lots. Free ests. KINGCAP-23455 874-9397

SOUTH END ASPHALT Driveways-Parking areas. Patching-Grading. 244-7544

L.A. KEYES, Patios, driveways, steps, aggregate. Estimates 878-4717 KEYESLA332PC

CONCRETE PATIOS, Driveways, Aggregate walls. Free est. BERGEC\*121PF, 838-5501

DRIVEWAYS/PATIOS Financing available. PANTHC\*122Q3 946-3552

FOUNDATIONS, driveways, sidewalks, new garages. BTCUSB15105. 922-5012, 841-2819

JVM CONCRETE: Free est. 874-6205

422 Cabinets

GLAZIER CALL 248-1114

Custom European Wall Systems Book Cases

Hardwood Entertainment Centers Shelving

Closet Organizers Office & Computer Work Stations

Serving Bellevue & So. King County 248-2398

430 Ceilings CEILING Repropts, texture. PETERSD22687 839-3002

SPRAYED Acoustic ceilings & wall texture. Keenan Acoustics 631-4414, 931-1327.

432 Windows CLEAN Windows in your home. 9 yrs. exp. Refs. Jeff's Windows, 839-1280

KLEER-VUE Window Clean Professional-Affordable Free Est. 241-6630

444 Handy Person NO JOB Too small. Home maintenance/painting. Call Doug, 878-2666

HOME Repair/painting. We do everything. 30 Yrs. Exp. 941-5241 Free ests.

IFIX 4 U Exp. Bathroom Specialist. Tub, shower walls. Faucets! Free est. Call Gena 839-2615 HONESH\*141KN

448 Cleaning DUSTBUSTERS Exc. house-cleaning at an affordable price! 824-0706

\*KREIN'S HOME CARE \* Complete housecleaning. One time or regular service by professionals. Rugs, upholstery Steam Cleaned. No calls on Sat. We furnish equipment. 839-8899

THE SCRUB BUDS for a "Crisp Clean" home. Linda 941-1985

CHRISTIAN Housecleaning. 5 yrs exp., Lic., 2 openings, reasonable rates. Call 241-5285

HOUSECLEANING w/o special touch. 939-5567

IRONING. Pick up available. 246-1658

LOOK No farther. For dependable & affordable house or office cleaning. Call 946-2927

TAYLOR MAID HOME CLEANING We don't cut corners... We Clean Them! Bonded & Guaranteed FREE ESTIMATES 763-3655

DO YOU Need a Clean House? Will do light cleaning. 36hr. 824-5923

HOUSE/APT. cleaning, 8 yrs. exp. Exc. refs. Reliable worker. Free est. 932-6663

450 Asphalt Boulevard Asphalt Paving Driveways, parking areas, seal coating, repairs. 20 yrs. exp. Free Est. 242-6317 BOULLEV 151KP

PUGET SOUND ASPHALT Driveways, repairs, parking lots. Free ests. 246-6629. PUGETSAS18LN

KINGCO ASPHALT Serving South King County. Driveways, repairs, seal coating, parking lots. Free ests. KINGCAP-23455 874-9397

SOUTH END ASPHALT Driveways-Parking areas. Patching-Grading. 244-7544

L.A. KEYES, Patios, driveways, steps, aggregate. Estimates 878-4717 KEYESLA332PC

CONCRETE PATIOS, Driveways, Aggregate walls. Free est. BERGEC\*121PF, 838-5501

DRIVEWAYS/PATIOS Financing available. PANTHC\*122Q3 946-3552

FOUNDATIONS, driveways, sidewalks, new garages. BTCUSB15105. 922-5012, 841-2819

JVM CONCRETE: Free est. 874-6205

470 Hauling, Moving

LOWEST RATES. Trash, limbs, etc. G.S. General Services. Greg 941-0905

MOVING? A-1 SMOOTH MOVES Careful, Quick, Courteous Work Guaranteed. 7 day service, Free ests. Refs. Bill 329-4749

NOTICE TO MOVERS-CARRIERS Washington State Law 81.80.355 states "Any person not holding a permit authorizing him to operate as a common carrier, contract carrier, or temporary carrier for the transportation of property for compensation in this state, or an exempt carrier, who displays any building, vehicle, billboard or in any manner, any advertisement of, or by circular, letter, newspaper, magazine, poster, car or telephone directory, advertises the transportation of property for compensation shall be guilty of a misdemeanor, and punishable as such."

For more information, please contact the Washington Utilities and Transportation Commission, 13101 N.E. Hwy. 99, Suite A, Vancouver, WA 98666. 1-206-696-6660.

480 In Home Care EXP. CARE in private home for elderly lady, ambulatory or loss of memory. Reasonable 242-6655

\*SPECIAL PEOPLE FOR SPECIAL NEEDS\* Elderly & child care too. Personal Professionals. 1-463-5631.

482 Child Care MARGIE'S Preschool & Daycare Activities, Meals. 14 Yrs. Exp. 244-1297.

LIC Shirley's Daycare. Rvtrt. Mon-Fri. day/night, meals. 246-2565.

PEPPERMINT STICK Daycare-preschool activity. Reading readiness, science, arts, crafts, drama, music, Spanish. Nutritious meals. 1 block Hazel Valley School, Burien. 244-2244.

DES MOINES CHILDCARE The Progressive Learning Center. 878-2750

ANY SHIFT Childcare. No meals, snacks. Des Moines. 824-1993

ANGLE LAKE Christian Daycare, daily preschool, 6am-6pm, 878-0829

BETTY'S Small World Daycare has openings for 2 children. Lots of love, preschool activities & play. 246-3798

CARE FOR KIDS 824-0607 Christian Daycare & Pre-School

We enforce the Christian values & principles you teach your children at home. Now accepting applications for April 1st. Several full & part time openings avail.

CHILD CARE, Federal Way. Wk days, all ages welcome, in your home 839-0454

DASH Point Daycare, christian arts & crafts, preschool. Margaret, 838-8703

DAYCARE near Federal Way Library, 839-0959

DISCOVERY WORLD'S Enrolling 0-12 yrs. 824-4184 or 859-2027

HOME Daycare has 2 full time openings, 332nd S.W. off 21st. 838-3107

IN HOME daycare w/ preschool, Angle Lake area, 878-3159

LIC child care, near Sea-Tac Mall, 2 & over. 838-6732

LANDSCAPE/DAWN MAINTENANCE 939-3772

LANDSCAPE Sprinklers, installations & Repairs. Journeyman Sprinkler Mechanic. 242-5630 JLDIRECT\*37NB

LAWNS \*Matched, aerated, fertilized, re-seeded, top dressed. 244-8116

PROMPT LANDSCAPE SERVICE. All phases of yard work, prune weed, hedge trim, bark, sod, hedge. Monthly mowing, hauling, tree trimming, general clean up. Low rates, affordable. Free estimates. Call 247-803, Bob, 235-1577

\*CLEANUP\* GENERAL LANDSCAPE Thatching, aerating, hauling, bark, pruning, Hedges Fertilizing, Mowing by the mo. (Over The Hill Gang). Start its 48th yr. We care! Call eves. 833-8471.

SPRING SPECIAL \$39 Mow, trim, edge sidewalks & driveways. Apply fertilizer with moss control up to 4000 sq.ft. Summer Maintenance Available

SPRING SPECIAL \$110 Thatch, clean-up, aeriate, mow, apply fertilizer with moss control to 4000 sq.ft. E.C.L.M. Inc. 824-4040

522 Real Estate Careers

Now Recruiting We are hiring experienced agents who want to be top professionals. Join Seattle's leading real estate company. Call Bob Smart, 839-6650 for a confidential interview.

LOGO 1178 JOHN L. SCOTT REAL ESTATE TRAINING 100% REPEATABLE AGENCY LIBRARY COMMISSIONS Call Harvey 243-6500 Century 21 Burien Realty REAL ESTATE TRAINEE

Local office of NATIONAL company seeking 3 or 4 people willing to be trained. First year earning of \$25,000 possible. All company training paid. Earn while you learn. "We're looking for people not numbers."

NEW LOGO 201 REALTY WORLD Doug Fields 838-3136

Real Estate Class State approved 3 clock hr course, sales person, license exam preparation. \$50 fee incl. study manual. Classes held, days, evs. & wk. ends, for details. Call Wenell Droeger 630-1800

524 Medical, Dental

ATTENDANT CARE-GIVER/NA or CNA Entry-level position available in residential facility for developmentally disabled. A variety of shifts to choose from. FIT - PIT hrs. At least 2 weeks off per month including 1-3 day week. Apply at 220 SW 160th Highline Care Center BRIGHT, Enthusiastic, mature person required for busy chiropractic office. Permanent position with good prospects. Varied & interesting duties. Salary commensurate with qualifications & experience. For interview/apply: 824-0119. Typing required.

Clinical Medical Asst. Pediatrics, Burien. Exp. or CMA training preferred. Salary DOE. 30 hrs./wk. 243-4811 after 8:30 am.

DENTAL ASST./Rv. front desk capabilities needed for busy Federal Way practice. Resume to: 1815 So. 324th Pl., Federal Way, WA 98003

DENTAL Hygienist, 3 days/week. Traditional duties in office with periodontal. Benefits & salary negotiable. Federal Way 98003 838-1188 or 927-0996

EXPERIENCED Medical Office Billing Clerk/Receptionist. Federal Way. 946-1839

GENERAL Medical Office person, experienced 57/hr. Burien. 9-4 pm. Send resumes to P.O. Box 48119, HTEFB28, Seattle, WA 98148

KIMBERLY QUALITY CARE RN's, LPN's, CNA's Home helpers needed for staff relief & home care. Hourly, intermittent & live-in. Call Auburn, 939-4503

LAB ASST. 8:30-12:30 pm. at Auburn Seattle lab. Blood drawing exp. req. \$6-\$6.50/hr. Apply in person, 2205 152nd Ave. NE, Redmond 98073-8111

LIVE-IN POSITIONS Immediate work for available for home helpers & CNA's. Car & telephone necessary. Call 939-4503 Kimberly Quality Care EOE/M/F/H

PN Needed full-time, newly decorated skilled care facility in Renton. Competitive salary, excellent benefits. 4430 Talbot Rd. So., 226-7500. EOE/H

MEDICAL Secretary, 6 position, exp. preferred. \$10/hr. 244-1680

MEDICAL ASST - PFT & exp. to work FIT or CPT in pleasant atmosphere for Southend specialty practice. Send resume to PO Box 66853, Burien, WA 98166

OFFICE Nurses/Medical Asst. So. Seattle, exp. med. ass'ts, Med. exp. & efficiency necessary. 783-3941

OPHTHALMIC Technician, Exp. preferred. Burien. 244-2398

ORTHODONTIC Exp. Assist. 4 day wk. Busy Burien Office. 241-6554

526 Beauty Salons

BARBER/STYLIST: Prefer long exp. apply in person at Twin Lakes Barber Shop. 3400 S.W. 320th HAIR DRESSER Full or part time, clientele provided. Pay negotiable. Medical. Dentist. 874-1047 or 878-5717

HAIR DESIGNERS. HOT SALON ELAN, 244-8886 HAIR STYLISTS, immediate family & part-time openings in salon. Guaranteed salary, bonuses, vacation pay, continuing education & medical. Call 839-9756

PRIVATE Room in classy salon for lease. 946-0222 RED Lion Styling Salon needs stylist w/some clientele, full or part-time. 248-0190

WANTED Hair Stylist w/ clientele, Full/part-time avail., attractive, friendly salon. Call Soosie 839-2010

527 Clerks, Cashiers

CASHIER Nights, at least 21. See us in person, AM-PM Mini Mart, 320th & Military

CASHIERS/DELIVERY CLERKS Advancing opportunities & frequent increases are your future working for Hoogy's Corner. Immediate openings avail. for ECE Degree, Call Danielle or Teri, 946-4539

IMMEDIATE openings for the following positions: \*DISHWASHERS \*WAIT PERSONS Must be available to work 40 hrs. & weekends. Apply in person only at Ramada Inn Sea Tac 18118 Pacific Hwy. S. Seattle. EOE

INTERNATIONAL Food Co. now hiring. All positions available. 878-1101 KING'S Table Buffet in Federal Way is now hiring. Apply in person: 31845 Pacific Hwy. S. EOE

NOW Hiring exp. Food Servers, earn \$7-\$7.50/hr. Paid health & dental. Paid vacation. Denny's, 50001 California Ave S.W., 937-1214

NOW Hiring all positions, inquire at SHAKY'S in Burien, 209 SW 148th. Ask for Helen, Donna, or Stacie. 246-4266

NOW Taking applications for Day Prep. Apply at Little Caesar's Pizza, 312th & Dash Point Rd.

PART TIME Dishwasher/Prep. Days/Nights. Experience preferred. Apply in person Twin Lakes Golf & Country Club, 3583 S.W. 320th St. No calls please.

RELEIF COOK, rotating schedule. Dietary aide, afternoon shift. Call June or John, 243-3056

SEA-TAC OMNI Restaurant needs PIT, day hostess & graveyard waitress. Apply in person from 2-4 pm. at 4701 So. 188th.

SKIPPER'S, Seafood 'n Chowder House is now seeking to fill a limited number of Assistant Manager & Career Entry Management Trainee positions in the South King location. Part-time A.M. & Full-time, avail. Call Caroline, 12-4pm, 243-3301

NOW Accepting applications. White Center Shop & Save, 10014 15th SW, Seattle. Please apply in person.

NOW HIRING Everybody welcome! General office & Sales positions are open. Full training provided. Start NOW. Call 878-2328

OPENING at Charlie's Appliance will train, 241-0421. ask for Carrie

SCREEN Printing & Die-Cutting Co. needs workers. 40 hrs/wk, \$4/hr. 241-2526

530 Food

ARA Service at Boeing taking applications for Cafeteria help. Cashiering, Food Assembly, Servers & Waitpersons. Good career start for the homemaker & ext. opportunity for the student. We offer Mon-Fri. work wk. exc. benefits, vacations, holidays. Interested applicants call, 655-1341. EOE, M/F, Ver./H.

AZTECA RESTAURANT Federal Way. Needs enthusiastic well groomed dependable Cocktail wait-person & Bartender. 31406 Pacific Hwy. So.

COOKS Mature, responsible individuals for late night shifts. Prefer over 21. Apply in person Vince's Italian Restaurant, 32411 Pacific Hwy So., Federal Way

DAY SHIFT Short Order Cook, wage DOE. 838-5929

EXECUTIVE Host Catering is now hiring On Call Quality Service Personnel. Wait Staff, Food Prep, Bartenders & Concession workers. Send letter of interest or resume to: Executive Host Catering, 1020 So. 344th St. 210, Federal Way 98003

IMMEDIATE Opening for energetic person who loves children. Responsibilities will include some cooking & van driving. Tuition reimbursement avail. for ECE Degree. Call Danielle or Teri, 946-4539

IMMEDIATE openings for the following positions: \*DISHWASHERS \*WAIT PERSONS Must be available to work 40 hrs. & weekends. Apply in person only at Ramada Inn Sea Tac 18118 Pacific Hwy. S. Seattle. EOE

INTERNATIONAL Food Co. now hiring. All positions available. 878-1101 KING'S Table Buffet in Federal Way is now hiring. Apply in person: 31845 Pacific Hwy. S. EOE

NOW Hiring exp. Food Servers, earn \$7-\$7.50/hr. Paid health & dental. Paid vacation. Denny's, 50001 California Ave S.W., 937-1214

NOW Hiring all positions, inquire at SHAKY'S in Burien, 209 SW 148th. Ask for Helen, Donna, or Stacie. 246-4266

NOW Taking applications for Day Prep. Apply at Little Caesar's Pizza, 312th & Dash Point Rd.

PART TIME Dishwasher/Prep. Days/Nights. Experience preferred. Apply in person Twin Lakes Golf & Country Club, 3583 S.W. 320th St. No calls please.

RELEIF COOK, rotating schedule. Dietary aide, afternoon shift. Call June or John, 243-3056

SEA-TAC OMNI Restaurant needs PIT, day hostess & graveyard waitress. Apply in person from 2-4 pm. at 4701 So. 188th.

SKIPPER'S, Seafood 'n Chowder House is now seeking to fill a limited number of Assistant Manager & Career Entry Management Trainee positions in the South King location. Part-time A.M. & Full-time, avail. Call Caroline, 12-4pm, 243-3301

NOW Accepting applications. White Center Shop & Save, 10014 15th SW, Seattle. Please apply in person.

NOW HIRING Everybody welcome! General office & Sales positions are open. Full training provided. Start NOW. Call 878-2328

OPENING at Charlie's Appliance will train, 241-0421. ask for Carrie

SCREEN Printing & Die-Cutting Co. needs workers. 40 hrs/wk, \$4/hr. 241-2526

SEWING MACHINE Operators, day & night. Union benefits. 824-1116

534 Misc. Jobs

DELIVERY Person 4pm-7pm, Mon-Fri., car provided. Must be over 25 yrs. & have excellent driver record & know local area. Avail. March 13. Call 244-9220.

EXP. CEMENT Finisher needed, 874-6205

EXP. Individual to run our small engines parts dept. Good working conditions. Benefits. Apply At Auburn Lawn & Garden, 308 West Main, Auburn

FLAGGERS Part-time full-time, need vehicle, drivers license & over 18 yrs. of age. Start \$5/hr. Benefits avail. after 700 hrs. Call for application, 285-9197 or 1-800-228-6602

KAPA FOSTER Parents for children needed. Emergency or long-term. \$8-\$8.50 per week. Disturbed child. Med-Dental care & training provided. Refs required. 721-4527

FULL-TIME Maid & front desk clerk. 721-6559

HELP Part/full time needed to work from office or home. \$800-\$2000 1878-1916

HOUSEBOUND Person to help artist (prefer in Burien or Seattle) who is unable to do tedious, time consuming, meticulous work & have good vision. Call in AM, 8-10am ONLY. 244-4742

IMMEDIATE OPENINGS For Dietary manager, dishwasher, nurses aides & more. Family atmosphere, convenient location. Evergreen Retirement Manor. 941-0156

IMMEDIATE OPENINGS In Federal Way-Seattle. No exp. necessary, will train. Gemini Supply needs to fill 25 positions in both Sales & Service Depts. For interview call Ray, 839-8818 or 874-2319 after noon.

INSURANCE Agents. Free qualified leads, paid weekly. Bonus plan, retirement program. Call Mon. 10 am - 7 pm. 941-7066. Ask for Mr. Eitzing.

INTERNATIONAL Food Co. now hiring. 878-1618

JAPAN New Zealand, Australia, Great Britain, etc. Work in Seattle or abroad. Full training. Start now! Mr. Thompson, 824-5633

LANDSCAPE & Nursery positions, full/part time, train. So. End location, 241-2115

LEWIS & CLARK THEATRES Now hiring days & evenings. \$3.90/hr. Apply in person.

MACHINIST Wanted, 2nd shift. So. Seattle shop, must have CNC exp. Supervisory exp. helpful. Send work history & salary requirements to: P.O. Box 31007, FWAAR08, Federal Way, WA 98003.

MARKET Research Interviewer, part-time can work into full-time, variable hrs.. Call 241-6050, 9:30 pm.

NATIONWIDE Studio looking for mature person to set appointments for our Burien location. Part-time A.M. & Full-time, avail. Call Caroline, 12-4pm, 243-3301

NOW Accepting applications. White Center Shop & Save, 10014 15th SW, Seattle. Please apply in person.

NOW HIRING Everybody welcome! General office & Sales positions are open. Full training provided. Start NOW. Call 878-2328

542 Employment Info.

CERICAL/COMPUTER SKILLS TRAINING For qualified residents in King County. No fee. Minorities encouraged to apply. Call Washington Human Development. EOE. 762-5192

INFORMED Birth & Parenting is offering a workshop to train childbirth assistants on March 31st to April 2nd. In Bellevue. Women who become childbirth educators are employed by a birthing couple, midwife or clinic to provide assistance & to help the primary attendant. Registration at the workshop is limited to insure personal attention. Those interested in further info. are invited to contact Kristyena Yount, (206) 432-0991

EXTRA Long twin waterbed. Excellent condition. \$75 878-4426

FULL BED, \$30. Changing table/dresser, \$50. Misc. furniture, make offer. 932-8066

FUTON Frame, Queen \$100. Big Book shelves, \$50. More. Ruth 632-8400

GIRL'S White twin bed, complete with mattress & 4 storage drawers. 244-9724

HIDE-A-BED, to a naughty, excellent condition. \$175. 244-0994

HOUSEHOLD Furniture for sale, many, many items. 878-6976

LARGE selection quality dining tables with chairs. Interiors Unlimited 878-9182

MULTI Colored flowered sofa & loveseat. Good cond., \$200/OBO. 243-4186

OAK Single bed frame, Baby furniture, rabbit coat, bookcase, single bed frame. 242-9822

QUEEN Size Sleeper Sofa, rocking chair & foot-stool. Plaid Autumn colors, Sears Open hearth edition. Very good cond. 838-8008

QUEEN Size sleeper 100. Wall unit \$110. 854-7319

SOFA Hide-a-bed, a bargain at \$150. Beautiful desk, \$200. Both in exc. cond. 927-6544, after 6 pm.

WATERBED, Super single good cond. \$150/OBO. 15 gal. aquarium, \$45/OBO 924-0806

12 DRAWER, Deluxe King Size Waterbed, \$250/OBO. 938-8870

2 PINE Deacon's benches, \$60 ea.; Large dresser, Mahogany, \$75. 838-9187

5 DRAWER Dresser, 2 drawer, desk-dress, drop-top. \$25 each. 246-7548

617 Sporting Goods This column is for the EXCLUSIVE use of children between the ages of 5 and 18 WHO ARE ENROLLED IN SCHOOL. Ads are free when used to sell a child's personal property worth \$25 or less. Price must appear in the ad. CANNOT BE USED TO SELL-MOTORIZED VEHICLES, FURNITURE, PETS, ELECTRONIC GAMES OR CLOTHING. No garage sale type ads.

617 Sporting Goods This column is for the EXCLUSIVE use of children between the ages of 5 and 18 WHO ARE ENROLLED IN SCHOOL. Ads are free when used to sell a child's personal property worth \$25 or less. Price must appear in the ad. CANNOT BE USED TO SELL-MOTORIZED VEHICLES, FURNITURE, PETS, ELECTRONIC GAMES OR CLOTHING. No garage sale type ads.

615 Furniture

COUCH, \$35; Love seat, \$25; 2 kitchen benches, \$25/ea. 243-6665

DINING Room set, peaco, lighted china closet, 8 chairs, tressle table w/2 leaves, custom pad, \$1200. Oak bedroom, queen headboard, 2 nightstands, triple dresser w/2 mirrors & chest, \$1000. 839-1744

DINNETE Table, round 42" white chrome frame. Four chairs, \$60. 243-8882

DREXEL Dining room set, 6 chairs & table w/3 leaves & pad. Glass-cream china cabinet & large buffet. \$1000. 824-1647

EXCELLENT Condition, Couch-Loveseat, \$225; Deluxe Spring Air mattress set, \$160; Microwave, \$60. 941-6853

EXTRA Long twin waterbed. Excellent condition. \$75 878-4426

FULL BED, \$30. Changing table/dresser, \$50. Misc. furniture, make offer. 932-8066

FUTON Frame, Queen \$100. Big Book shelves, \$50. More. Ruth 632-8400

GIRL'S White twin bed, complete with mattress & 4 storage drawers. 244-9724

HIDE-A-BED, to a naughty, excellent condition. \$175. 244-0994

HOUSEHOLD Furniture for sale, many, many items. 878-6976

LARGE selection quality dining tables with chairs. Interiors Unlimited 878-9182

MULTI Colored flowered sofa & loveseat. Good cond., \$200/OBO. 243-4186

OAK Single bed frame, Baby furniture, rabbit coat, bookcase, single bed frame. 242-9822

QUEEN Size Sleeper Sofa, rocking chair & foot-stool. Plaid Autumn colors, Sears Open hearth edition. Very good cond. 838-8008

QUEEN Size sleeper 100. Wall unit \$110. 854-7319

SOFA Hide-a-bed, a bargain at \$150. Beautiful desk, \$200. Both in exc. cond. 927-6544, after 6 pm.

WATERBED, Super single good cond. \$150/OBO. 15 gal. aquarium, \$45/OBO 924-0806

12 DRAWER, Deluxe King Size Waterbed, \$250/OBO. 938-8870

2 PINE Deacon's benches, \$60 ea.; Large dresser, Mahogany, \$75. 838-9187

641 Items For Sale

PINBALL Machine, works good. Glow foot bathtub, \$115. 935-4889

POOL Table, \$100; 25" Color T.V., \$50. 952-3496

WHEELCHAIR, Rolls 2000, Like New, \$550. 762-3997

DOGGOE GOOD BUY! \$8 For 6 Words plus Price & Phone Number

ADS RUN 1 WEEK IN ALL 6 ROBINSON NEWSPAPERS

ITEMS FOR SALE WORTH \$1,000 OR LESS

RULES: Private party ads only. Ads will run in our regular classifications. No copy changes are permitted and no refund for early results. Charge to MCV/Visa, check or cash for only \$8, or we will bill you for an additional \$50. Ads may be cancelled to avoid further phone calls. May not be used with any other special classified rate offer or coupons. Cannot be used for Garage Sale Ads. 839-9520 Tacoma 927-2424

643 Antiques EAST HILL CARRIAGE ANTIQUE Mall Wonderful things arriving daily! Over 25,000 items. Come spend the day. Mon. Sat. 10-6, Sun. 11-6. 25748 101st Ave SE, Kent. East Hill Shopping Center, next to Stock Market Grocery. 852-1199

656 Kids' Ads TWO boys & 2 girls bicycles, \$20 each. 874-6837

2 ARAYA Bicycle wheels. Good condition. \$25/each. Firm. Bicycle forks, good condition. \$10. 838-6169 after 5 pm. Mon-Fri.

2 BIKES for Sale: \$10 for Both. ALSO, WANTED Music stand, will pay reasonable price. 952-3533

3 LARGE Bird or Animal Cages \$15 ea. 824-3672

KID'S ADS This column is for the EXCLUSIVE use of children between the ages of 5 and 18 WHO ARE ENROLLED IN SCHOOL. Ads are free when used to sell a child's personal property worth \$25 or less. Price must appear in the ad. CANNOT BE USED TO SELL-MOTORIZED VEHICLES, FURNITURE, PETS, ELECTRONIC GAMES OR CLOTHING. No garage sale type ads.

675 Garage Sales Federal Way MOVING SALE, Fri. Sat. & Sun. 32205 43rd Pl. S.W. WASHER/Dryer & lots of misc., 32507 2nd S.W., Sat. 9-4pm. Sun. 11-4pm.

700 799 PETS LIVESTOCK

702 Pets, Pet Needs K-9 COLLEGE DOG OBEEDIENCE CLASSES Start March 20-30. AM & PM, 8 King County locations, 821-7032 call collect

PETS ARE INNOCENT! Boarding w/out cages in a loving home environment. SIX Puppies, German Shepherd/Husky, \$100/OBO. 839-6603

404 Purebred Dogs AKC Sheltie pups, champion lines, \$275. 941-4930

PUREBRED Blond Cocker, 5 yr. old, great with children, \$40. 852-1297 evs.

708 Free Pets (Free) FREE BLACK Male cat, comes w/litter box, toys & scratching post. 244-5132

800 899 Transportation

CARS WANTED Dead or Alive 244-5204

CASH FOR JUNK CARS 7 day service 924-0261 833-0454 927-7462

UNWANTED Junk Cars & Trucks-Top Cash. 878-2295

803 Parts Accessories WINDSHIELDS 65% OFF AAA AUTO GLASS 271-7778 874-4714

1941 Pontiac flathead 6 engine with transmission. Excellent. \$500. 941-6678

2 STUDDER Snow tires mounted on Chev. wheels, \$60. Snow chains, fit 14" or 15" wheels, \$25. 839-9345

804 Auto Wrecking CASH JUNK CARS OR TRUCKS BODY & FRAMES FREE 7 DAYS 852-6363 244-4314 725-7549

806 Boats, Supplies MOORAGE wet & dry, covered with free in & out. Fairlier Marina, 2560 E. 11th St., Tacoma. 383-4656

14 ft. Aluminum Boat with trailer. 18 Johnson & 12 thrust motor. \$900/OBO after 5 pm. 935-4198

807 Motorcycles, Snowmobiles HONDA'S 15th Annual Midnight Sale. Sat. March 18. All day till Midnight. Unbeatable deals like: 1988 VTR250 Interceptor \$2,998

1988 NX250 \$2,498 Exclusively at the unbeatable Honda Motorcycle dealer, Hinshaw's Honda Auburn store only. 852-7326, 937-7164

Honda come ride with us! 1980 COLUMBIA Moped, good cond., \$200. 839-5829 or 839-8472

1980 HONDA 900CB Custom. Full fairs & matching saddle bags. Cas-sette/stereo. \$1500. 839-0136

1981 SUZUKI 850, shaft drive, full fairs, fully equipped, trailer, \$1850. 243-4666

1982 KAWASAKI LTD400, black with black rest & coral. Includes two Nova helmets, \$650. Contact Candis, 839-4830 4-11 pm.

1986 KAWASAKI 750 Vulcan, 10,000 miles. Lots of TLC, always garaged. \$1750. 839-3636

808 RV's Sale-Rent FULL BASEMENT MINI! NEW 1989 MODEL 27' BIG STORAGE DBL BED W/VANITY, MICRO-GEN-AIR - CRUISE - 460 FORD - DELUXE! REG. \$47,895 Plus Tax/Lic. \$38,895

21 USED SUNDAY RV'S OPEN 11-6 PART DEPT. OPEN SAT. KORUM RV CENTER 500 RIVER ROAD - PUYALLUP 845-6600 1-800-826-2343

814 Trucks, Vans 1982 TOYOTA Pickup, one owner. Low miles. \$4,150. 243-8

